



# **ST JAMES'S PARK AND THE GREEN PARK MANAGEMENT PLAN**

**The Royal Parks**

**2008 - 2018**

Updated project register 2014

# CONTENTS

<b>PART 1: CONTEXT AND RESPONSIBILITIES .....</b>	<b>1</b>
<b>1.0 Introduction .....</b>	<b>2</b>
The Royal Parks .....	2
St James's Park and The Green Park .....	2
The Management Plan .....	3
Aims of the St James's Park and The Green Park Management Plan .....	3
The Conservation Statement .....	4
Structure of the Plan .....	5
<b>2.0 General and Management Context .....</b>	<b>7</b>
Location .....	7
Park Management Structure .....	7
Management structure of TRP .....	8
Landscape Maintenance .....	9
Policing and law enforcement .....	9
Neighbours .....	10
<b>3.0 Strategic Framework .....</b>	<b>12</b>
National Designations and Policies .....	12
Regional Strategic Planning Context .....	13
Local Planning Context .....	15
<b>4.0 Historical Context .....</b>	<b>19</b>
St James's Park .....	19
The Green Park .....	21
<b>5.0 Physical Description .....</b>	<b>27</b>
Topography .....	27
Geology .....	27
Soils .....	27
<b>PART 2: DESCRIPTION, USE AND CHARACTER .....</b>	<b>31</b>
<b>6.0 Natural Fabric .....</b>	<b>31</b>
Trees .....	31
Grassland .....	32
Horticultural Displays .....	33
Ecology and Wildlife .....	34
Water body and Lakeside .....	35
<b>7.0 Buildings and Hard Landscape Fabric .....</b>	<b>37</b>
Buildings and Main Structures .....	37

Monuments and Main Artefacts .....	38
Boundaries and Gates .....	40
Road and Path Network.....	41
Park Furniture and Signage.....	41
<b>8.0 Public Use .....</b>	<b>45</b>
Public Access.....	45
Visitor Profile .....	45
Events.....	46
Visitor Amenities.....	49
Informal and Semi-Informal Activities.....	51
Visitor Satisfaction.....	53
<b>9.0 Landscape Character .....</b>	<b>54</b>
Views: St James’s Park.....	54
Character Areas: St James’s Park .....	57
Views: The Green Park.....	59
Character Areas: The Green Park.....	63
<b>PART 3: LANDSCAPE STRATEGY .....</b>	<b>67</b>
<b>10.0 Significance .....</b>	<b>67</b>
Statements of Significance .....	67
Summary of Key Significance .....	68
<b>11.0 Key Management Issues .....</b>	<b>71</b>
St James’s Park Headline Issues.....	71
The Green Park Headline Issues .....	74
<b>12.0 Landscape Management Strategy .....</b>	<b>77</b>
The Long Term Vision for St James’s Park.....	77
Guiding Principles for Conservation .....	77
The Long Term Vision for The Green Park.....	80
Guiding Principles for Conservation.....	80
<b>PART 4: MANAGEMENT POLICIES .....</b>	<b>83</b>
<b>14.0 Guiding Policies for Conservation.....</b>	<b>85</b>
Physical Context.....	88
Natural Fabric .....	88
Horticultural Areas.....	91
Built Fabric .....	93
Public Access and Enjoyment .....	100
Character Areas & Views.....	104
St James’s Park .....	104
The Green Park.....	107

<b>14.0 Implementation.....</b>	<b>109</b>
Monitoring and Review .....	110
Implementation of The Management Plan .....	110
The Operations Plan.....	110
Consultation and Adoption of the Plan.....	111
Review .....	112
<b>15.0 Next Steps – the Project Register.....</b>	<b>113</b>

## TABLES

Table 10.1 Key Significance.....	68
----------------------------------	----

## FIGURES

Figure 1.1 Photo Sheet.....	6
Figure 4.1 Historical Context.....	24
Figure 4.2 Photo Sheet.....	26
Figure 5.1 Geological Map.....	28
Figure 6.1 Location of Wells in St James’s Park.....	36
Figure 7.1 Built features and statuary .....	43
Figure 9.1 St James’s Park Views.....	55
Figure 9.2 Character Areas St James’s Park.....	60
Figure 9.3 The Green Park Views .....	61
Figure 9.4 Character Areas The Green Park.....	65
Figure 14.1 Photo Sheet St James’s Park.....	99
Figure 14.2 Photo Sheet The Green Park.....	106

## APPENDICES

Appendix 1: Register of Parks and Gardens of Special Historic Interest

Appendix 2: Consultee List

Appendix 3: List of Relevant Royal Parks Documents

Photographs: Alan Barbar, Mark Wasilewski & The Royal Parks

# **PART I: CONTEXT AND RESPONSIBILITIES**

---

The following chapters describe the general background and context for St James's Park and The Green Park covering the Parks' statutory obligations, the strategic planning context and the background of historical evolution which has shaped the Park into its present form.

1. Introduction
2. General and Management Context
3. Strategic Framework
4. Physical Description

## I.0 INTRODUCTION

---

### THE ROYAL PARKS

- 1.1 St James's Park and The Green Park are two of the eight Royal Parks, which are owned by the Sovereign and managed by the Government through the Department for Culture, Media and Sport (DCMS). The Royal Parks comprise **St James's Park**, **The Green Park**, Kensington Gardens, Hyde Park and the Regent's Park-Primrose Hill in inner London with Richmond Park, Bushy Park and Greenwich Park based around river palaces along the Thames in outer London. Both Parks cover an area of 45 hectares (105 acres) in central London lying within the City of Westminster. On its western tip of The Green Park, the Parks connect with Hyde Park, via surface pedestrian road crossings, forming part of an outstanding corridor of green space and cultural heritage in the heart of London.
- 1.2 The Royal Parks are unique both individually and collectively and they are important at the international scale. They form an unequalled set of green spaces, offering Londoners and tourists opportunities for tranquillity, recreation, solitude, fresh air, colour and delight. Individually they display a diversity of character and content; each has a particular and inspiring heritage value; and collectively they are, in the main, richer for their reworking and cumulative layers of history. All the Parks are Grade I Listed Historic Landscapes (except The Green Park, which is Grade II) and contain many listed buildings and artefacts. They are greatly valued by the millions of visitors who use the Parks each year. The Royal Parks provide the setting for many of our national and ceremonial events as well as the context of and counterpoint to metropolitan activity. They are a symbol of national image and identity; and to a considerable extent they reflect the well being, pride, confidence and vibrancy of the capital and the nation. They deserve the highest level of protection, conservation and management.

### ST JAMES'S PARK AND THE GREEN PARK

- 1.3 St James's Park and The Green Park are two parks with distinctive characters and management issues; though they are connected by the Queen Victoria Gardens directly in front of Buckingham Palace. Due to their historical development and proximity to one another they are both managed by a single management unit based in St James's Park Storeyard.
- 1.4 St James's Park covers an area of 23 hectares, situated in the City of Westminster. The inner park survives today substantially to the picturesque manner of John Nash, with its naturalistic lake and islands, informal plantations and shrubberies. The ground gently undulates reflecting the shallow basin form of the former Tyburn Brook.
- 1.5 The Green Park, covering 19 hectares, is presented in an informal rural landscape of pasture, meadow and trees. The Park lies on a distinctive



landform of a ridge of the Lower Terrace Gravels that runs alongside Piccadilly and gently slopes down towards The Mall in the South East corner.

- 1.6 The Parks are significant in terms of its location, neighbours and national ceremonial routes. They are both heavily used by visitors from all over the world due to their proximity to Buckingham Palace, Whitehall, Downing Street and Trafalgar Square. The Park continually hosts significant State, Ceremonial and National events such as the Trooping the Colour, Tour de France (2007) and events for the Olympics in 2012.
- 1.7 The two Parks are unique due to their proximity in the heart of London and that they are open 24 hours a day. In recent years the residential population has increased in the size with new residential developments in the locality. Unfortunately this has not generated enough interest to form a Friends Group, though the Thorney Island Society is a local area interest group that have taken on the role of the 'Friends of St James's Park and The Green Park'. The Parks work closely and in partnership with other organisations and stakeholders on various initiatives such as the World Squares Project and the Central Wildlife Group.

## **THE MANAGEMENT PLAN**

- 1.8 The Management Plan provides the mechanism to conserve and enhance the essential and varied character of St James's Park and The Green Park. It includes policies and guidance based on Government policy guidance, which sets out the long-term ethos for the Park's future management and development. The Management Plan develops more detailed short-term plan of priorities and actions to be implemented over the next ten years and it uses the subdivision of character areas as a management tool in recognising the relative complexities of historical layering, ecology and significant elements of the Park.
- 1.9 The management plan has been prepared within the context of *the Royal Parks Framework Document (April 1993)*, *The Royal Parks Corporate Plan (2006-2008)* and *The Royal Parks Citizen's Charter*. Other considerations it has included the independent report of The Royal Parks Review Group (1996) and the discussions from the consultation with key stakeholders (see Appendix 2).

## **AIMS OF THE ST JAMES'S PARK AND THE GREEN PARK MANAGEMENT PLAN**

- 1.10 St James's Park and The Green Park are extremely well used Parks with increasing visitor numbers each year. They are renowned for their picturesque and informal rural character in the heart of London. The management plan is a tool to enable The Royal Parks (TRP) to undertake management of the Park more effectively. In particular the aims of the plan are:

- to provide a vision for the Park for 100 years informed by a back view of 350 years;
- to provide a framework for management of the Park for a 10 year period to work towards achieving the vision;
- to guide future managers and ensure continuity of management over time;
- to provide priorities for managing multiple use and potentially conflicting interests within the Park;
- to provide a document to demonstrate to other groups and organisations how the Park is being managed.

1.11 It is intended that the plan is strategic in nature, setting out the vision for the Park and broad objectives to guide management. This can then be used to prepare detailed specifications for management, and allow budget preparation, allocation and work programming.

## **THE CONSERVATION STATEMENT**

- 1.12 The purpose of The Royal Parks is to balance the responsibility to protect, conserve and enhance the unique landscapes, environments, heritage and vistas of the eight Royal Parks in London with active and creative policies to encourage wider access to them and to increase opportunities for enjoyment, delight, sanctuary, information, education, creativity and healthy recreation for everyone, now and in the future.
- 1.13 This conservation statement seeks to ensure that historic landscapes, buildings, structures and archaeology are protected, conserved and enhanced notwithstanding improved access and increased utility.
- 1.14 The Royal Parks are committed to protecting, conserving and enhancing landscapes, environments, heritage and vistas which have been identified as being of 'special interest' as set out in the policy statements and management guidelines which follow. The policy statements comprise a character appraisal and management guidelines for each element identified as being of special interest.
- 1.15 The special historical or architectural interest of the landscapes, buildings, structures and archaeology has been based on detailed analysis of the Park considering:
- the origins and development of the topographic framework;
  - the character and hierarchy of places and landscape quality;
  - the contribution made by trees, planting and other natural or cultivated elements to the character of the area;
  - the prevailing (or former) uses within the area and their historic patronage;



- the importance and sensitivity of known archaeology in the area and the potential for discovery of other significant concealed features;
- the contribution made by ecological diversity to the area
- the architectural and historic quality, character and coherence of the buildings and structures and the contribution they make to the special interest of the Park;
- the relationship of the landscape to built environment including definition of significant landmarks, vistas and panoramas, where appropriate; and
- the extent of loss, intrusion or damage: features which detract from the special character of the area (and which provide opportunity sites where change is to be encouraged).

1.16 The Royal Parks constantly aim for the highest standards of conservation and will ensure that all contributing to the management of landscapes, environments, heritage and vistas are aware of the site-specific special interest they hold in trust.

References: Burra Charter (ICOMOS, Australia 1979); British Standards Institute (BSI) English Heritage 'Power of Place'; DCMS - 'The Historic Environment - a force for our future' 2001

## **STRUCTURE OF THE PLAN**

1.17 The plan is structured as follows:

- a summary of the background to the Park, including the location of the Park, a description of wider environment and strategic framework;
- a short description of the Park which identifies the main management issues for the management plan;
- a vision for the Park which sets out what TRP wants to achieve;
- a series of management objectives and actions which aim to achieve the vision. Some policies are "park-wide", others relate to specific areas;
- a summary of the implementation of the plan i.e. how the objectives and actions will be achieved and monitored.

1.18 The Operations Plan, which sets out management actions together with a priority for action each year structured in line with the Green Flag Award Criteria. The action plan is intended as a working document which is reviewed and updated each year.

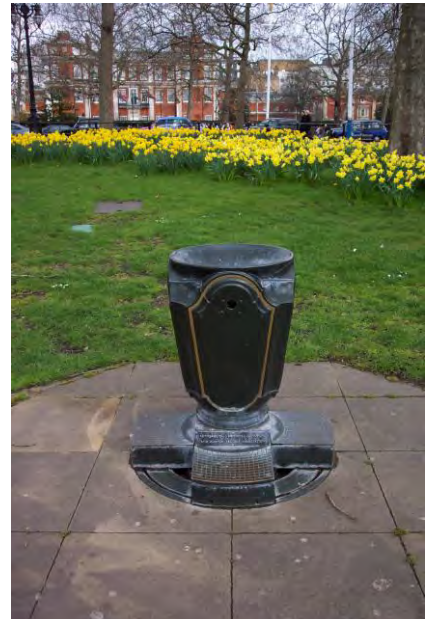
**Figure I.1 Photo Sheet**



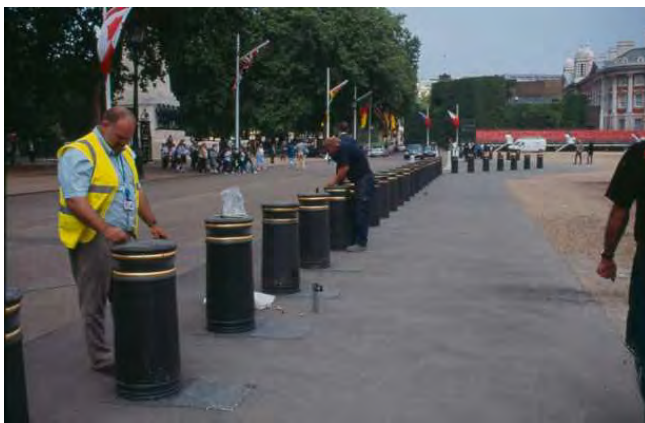
Leafyard border



Queen Victoria Memorial



Lutyens Drinking Fountain



Horse Guards Parade Bollard installation



Mounted Horse Guards on The Mall



Queen Victoria Memorial Gardens



Swire Fountain lit at night

## **2.0 GENERAL AND MANAGEMENT CONTEXT**

---

### **LOCATION**

- 2.1 St James's Park and The Green Park are at the historic heart of the nation, and are some of England's best-loved historic Parks. They lie between Buckingham Palace and Apsley House to the west and the residence and offices of the Prime minister to the east. The Green Park is situated north of Buckingham Palace and Gardens; it is triangular in shape bounded by Constitution Hill, Piccadilly and Queens Walk. St James's Park narrowest point is at the Queen Victoria Memorial gardens in front of Buckingham Palace and it opens out the west, encompassing Horse Guards Parade, to Whitehall. The outer park of avenue and parades is made up of The Mall, Horse Guards Road and Birdcage Walk. Trafalgar Square is connected via Admiralty Arch in the north east corner and the River Thames lies beyond the Palace of Westminster to the east. To the south and south west lie Westminster Abbey, Westminster Cathedral and Victoria Station. St James's Palace and Clarence House are situated to the north with access to Regent's Street and Piccadilly Circus via Duke of York Steps. (See Figure 2.1 Visitors' Map of the Parks).

### **PARK MANAGEMENT STRUCTURE**

- 2.2 The Royal Parks are owned by The Queen in right of the Crown and is a government Executive Agency owned by the Department for Culture Media and Sport (DCMS). The DCMS Public Service Agreement (PSA) targets for 2005-2008 have been agreed with Treasury. To assist in meeting its PSA targets, and within the context of its strategic priorities, DCMS sets objectives for its agencies.
- 2.3 The Public Service Agreement targets for DCMS, agreed by Treasury are:
- To enhance the take-up of sporting opportunities by 5-16 year olds so that the percentage of school children who spend a minimum of two hours each week on high-quality Physical Education and school sport within and beyond the curriculum from 25% in 2002 to 75% by 2006 and 85% by 2008 (joint target with the Department for Education and Skills (DfES))
  - To halt the year-on-year increase in obesity among children under 11 years by 2010, as part of the broader strategy to tackle obesity in the population as a whole (joint target with the DfES and Department of Health).
  - To increase the take-up of cultural and sporting opportunities by people aged 16 and above from priority groups by 2008.
  - To improve the productivity of the tourism, creative and leisure industries
  - Efficiency target: To achieve at least 2.5% efficiency savings on our Departmental expenditure limit and Local Authority spending on leisure and culture services (2005 - 2008).

Alongside these, DCMS has stated that its strategic priorities are:

- **Children and young people**  
To further enhance access to culture and sport for children and give them the opportunity to develop their talents to the full and enjoy the benefits of participation
- **Communities**  
To increase and broaden the impact of culture and sport, to enrich individual lives, strengthen communities and improve the places where people live, now and for future generations
- **Economy**  
To maximize the contribution that the tourism, creative and leisure industries can make to the economy
- **Delivery**  
To modernise delivery by ensuring our sponsored bodies are efficient and work with others to meet the cultural and sporting needs of individuals and communities.

2.4 The Royal Parks' specific objectives are:

- To protect and enhance our "world class" natural park environment for the enjoyment of families, children and visitors
- To understand and respond to the needs of our audiences, reflecting diversity of needs and use; enriching lives and enhancing access to culture and sport
- To work with other organisations and volunteers to deliver clear education, health, sport and participation offers
- To conserve and enhance the historic built environment of the Royal Parks
- To deliver greater value for money for the taxpayer through increased income generation and reduced dependency on vote funding
- To demonstrate organisational excellence

## **MANAGEMENT STRUCTURE OF TRP**

2.5 TRP has the executive responsibility for managing and policing the Royal Parks.

St James's Park and The Green Park have a core TRP staff comprising a Park Manager, one Assistant Park Manager one Technical Officer, an Office Manager and Administrative Officer and 2 Wildlife Officers. The Metropolitan Police are responsible for policing the Park (see below).

### **Park Management: Key Management Issues**

- The objectives and actions for management of the St James's Park are to retain the quiet and peaceful quality of the Park making reference to the Nash design and accommodating the National Events and Ceremonies for enjoyment of local residents, national and international visitors. Similarly in The Green Park the 'rural' nature of the landscape is to be retained and enhanced while allowing for the high visitor numbers and pressure on the fabric of the Park (**refer to POLICY CONI**).

## **LANDSCAPE MAINTENANCE**

2.6 Maintenance of the gardens, including horticulture maintenance and development and minor landscaping work, is undertaken as follows:

- grass cutting, tree planting, woodland management and general estate maintenance is undertaken by the landscape maintenance contractor.
- two tree contractors, City Suburban Arboricultural Services and Harroway Tree Services undertake tree management including: mature tree maintenance, tree felling, timber extraction and pollarding.
- there are 2 wildlife officers, employed directly by the TRP who undertake wildlife management (particularly waterfowl) and wildlife interpretation.
- the landscape maintenance contractor is let on a 4-year term extendable to 6 years.

The current 5-year contract was successfully won by Enterprise Ltd and began in April 2006.

2.7 TRP are also assisted by consultants (including landscape consultants, catering and marketing consultants and traffic consultants) and draws upon specialist advice from many other groups (e.g. English Heritage, The Central Royal Parks Wildlife Group).

### **Landscape Maintenance and Specialist Support: Key Management Issues**

- A large number of different and influential organisations and individuals work with the Park, and TRP should consider how it will ensure that the objectives and recommendations made in the management plan will be communicated to the people undertaking the work (**refer to POLICY CONI**).

## **POLICING AND LAW ENFORCEMENT**

2.8 Responsibility for policing St James's Park and The Green Park falls on the Metropolitan Police under their Operational Command Unit (TRO OCU), which is based in the Royal Parks. The TRO OCU matches the standards

laid down for Home Office Department Police Forces in respect of recruitment, training, promotion, complaints, discipline, uniform and equipment. There is a permanent unit based at St James's Park.

2.9 For large events the Metropolitan Police assume control and provide assistance.

2.10 A number of specific objectives are set out by the TRO OCU including:

- preventing and reducing the offences of robbery and theft from the person;
- to address antisocial behaviour as identified as a local priority;
- to enforce the Park regulations according to local need;
- to take a proactive role in promoting effective working arrangements with our partners in The Royal Parks.

2.11 The Safer Parks Panel

TRP OCU tasks launched the Safer (Neighbourhood) Parks initiative in 2006/07 to introduce effective community policing through meetings with stakeholders.

2.12 Neighbours

The Park and area comprising the complex of buildings which surround both St James's Park and The Green Park. The list of significant neighbours includes:

- Buckingham Palace,
- Clarence House,
- Whitehall,
- Downing Street,
- British Council,
- Commonwealth Secretariat,
- FCO Government Hospitality,
- Churchill museum & Cabinet War Rooms,
- Guards Museum,
- Mall Galleries,
- Household Cavalry Museum,
- Institute for Contemporary Arts,
- Royal Collection,
- Palace of Westminster,
- Westminster Abbey,
- Westminster School,
- and the Peabody Estate.

2.13 The park is surrounded by important buildings and landscapes and the whole of the surrounding context forms part of a Conservation Area. The adjoining Listed Buildings are noted in the following chapter. Notable stakeholders are Buckingham Palace, Whitehall, Downing Street, The Mall

Galleries, English Heritage, Clarence House, St James's Palace and the Wellington Barracks.

**Management Issues: Areas Not Managed by TRP**

- *Large areas of the historic estate, which are not controlled by the TRP. (CON1)*
- *Division of responsibilities is complex and operationally difficult (CON1).*
- *TRP works in partnership with other organisations in the area to tackle issues relating to areas which are not managed by TRP (CON1).*
- *Security issues impact on the territory of the Parks including boundary walls, fencelines, and park and street furniture. (PUB2, BUIL3 & 8)*
- *Location close to the West End combined with effectively 24 hour public access needs to be noted though crime figures are low; antisocial behaviour does occur such as petty vandalism.(PUB2)*
- *The consultation process for any projects in the Parks requires a comprehensive group of stakeholders to be involved. Also the Parks play a key role in the consultation process for the World Squares Project due to their proximity to Trafalgar Square and Parliament Square.(CON1, PUB5)*



## 3.0 STRATEGIC FRAMEWORK

---

- 3.1 This section describes the key national, regional and local designations, policies and strategies relating to St James's Park and The Green Park. This strategic framework provides the context for management of the Parks.

### NATIONAL DESIGNATIONS AND POLICIES

#### National Planning Policy Guidance

- 3.2 The Government determines national policies on different aspects of planning and the rules that govern the operation of the planning system. National planning policies are set out in new-style Planning Policy Statements (PPS), which are gradually replacing Planning Policy Guidance Notes (PPG).
- 3.3 PPSs and PPGs explain statutory provisions and provide guidance to local authorities and others on planning policy and the operation of the planning system. Those particularly relevant to Parks and the historic environment are listed below.
- PPS 9 Biodiversity and Geological Conservation
  - PPG 15 Planning and the historic environment
  - PPG 16 Archaeology and planning
  - PPG 17 Planning for open space, sport and recreation
- 3.4 National policy on the historic environment is mainly set out in *PPG 15 Planning and the historic environment*. *PPG 15* highlights the importance attached to the historic environment, an irreplaceable resource valued for its own sake as well as for its contribution to education, quality of life, local distinctiveness, the character and appearance of places and to leisure and recreation. On the subject of parks and gardens *PPG 15* comments that 'England is particularly rich in the designed landscapes of parks and gardens, and the built and natural features they contain. The greatest of these are as important to national, and indeed international, culture as are our greatest buildings.'
- 3.5 This highlights the importance of the historic landscapes of St James's Park and The Green Park, both for their intrinsic historic and archaeological interest, their cultural value and their current and potential contribution to education, quality of life, and local character.

#### Designations

- 3.6 A range of designations influence the management of St James's Park and The Green Park. These are summarised below:
- **Grade I and II Historic Park and Garden:** St James's Park is included as Grade I and The Green Park as Grade II on the English Heritage Register of Parks and Gardens of Special Historic Interest (included on register since 1987).

(In order to recognise the existence of historic parks and gardens which are of particular historic importance, English Heritage is enabled by Section 8C of the Historic Buildings and Ancient Monuments Act 1953 (inserted by section 33 of, and paragraph 10 of Section 4, to the National Heritage Act 1983) to compile the *Register of Parks and Gardens of special historic interest in England*. There are currently nearly 1450 sites included on the *Register* divided into three grade bands to give added guidance on their significance. The majority of the sites identified through the *Register* as being of a sufficiently high level of interest to merit a national designation, are designated grade II. Some sites, however, are recognised as being of even higher value. Around 30% of the 1450 are considered to be of exceptional historic interest and are awarded a star giving them grade II\* status. A further 10% are of international importance, and are classified as grade I. *Source: English Heritage Website*)

- **Listed Structures:** There are **143** listed buildings and structures in St James's Park and **80** listed structures in The Green Park, as detailed below. (There are no buildings in The Green Park.) 209 out of the total 223 listed structures in the combined Parks are lampposts. There are 14 other listed structures/buildings.

Listed Structure	Grade
<b>St James's Park</b>	
Queen Victoria Memorial	I
Queen Victoria Memorial Gardens	I
Admiralty Arch and railings	I
Buckingham Gate Lodge	I
131x Lamp standards	II
8x other features including lodges, memorials, fountains, ornamental gates and railings	II
<b>The Green Park</b>	
Canada Gates	I
Devonshire House Gates and gate piers	II*
78x Lamp standards mainly on Constitution Hill and Queen's Walk	II

- **Conservation Area:** The Parks are designated as a Conservation Area, with relevant policies in the Adopted Unitary Development Plan for the City of Westminster.

## REGIONAL STRATEGIC PLANNING CONTEXT

### The London Plan: Spatial Development Strategy for Greater London

- 3.7 The Mayor of London's Spatial Development Strategy for London published in February 2004 provides regional strategic planning guidance (replacing the 1996 RPG 3). The Spatial Development Strategy develops policies under a series of themes. Those of most relevance to St James's and The Green

Park are contained within theme 3D: *Enjoying London* and theme 4B: *Designs on London*.

- 3.8 In addition, the Parks fall within Central Activities Zone (CAZ), which is the area in central and east London where the London Plan policy promotes finance, specialist retail, tourist and cultural uses and activities.

### **3D: Enjoying London**

- 3.9 This part of the plan sets out policies to ensure diverse opportunities to enjoy London through its culture, shopping, sport, tourism and open spaces.
- 3.10 Under policy 3D, open space is considered an integral part of the London's spatial character. London's Green Belt and Metropolitan Open Land form the basic structure of London's strategic network of open space. St James's and The Green Park are designated as **Metropolitan Open Land (MOL)**. This is a designation unique to London, and protects strategically important open spaces within the built environment. The policy recognises the importance of and sets the criteria for land designated as Metropolitan Open Land. MOL is then referred to in local planning policies.

### **4B: Designs on London**

- 3.11 Under policy 4B the Mayor has designated a selected set of strategically important views as part of the *Policy 4B.15 London View Protection Framework*. These include the following, which directly affect or are close to The Green Park and St James's Park.
- **Townscape views** including the Palace of Westminster to Hyde Park and St James's Park Bridge to Horse Guards Road.
  - **Linear Views** of Buckingham Palace from The Mall and of St Paul's Cathedral from Richmond Park. (passing across part of St James's Park)
- 3.12 These views are to be managed in accordance with policies 4B.16 *View management plans* and 4B.17 *Assessing development impact on designated landscape*. Boroughs should base the designation and management of local views in their UDPs on these policies, which will become operational when the existing Strategic View directions are withdrawn.

### **The London Biodiversity Action Plan and Biodiversity Strategy**

- 3.13 The UK Biodiversity Action Plan sets out a national strategy for wildlife conservation, based upon action plans for habitats and species. The London Biodiversity Action Plan (**Our Green Capital**) has been prepared by the London Biodiversity Partnership (January 2001). This includes an Action Plan for Parks, Squares and Amenity Grassland.
- 3.14 In addition to BAP's, the Mayor has published a Biodiversity Strategy (**Connecting with London's Nature, The Mayor's Biodiversity Strategy**, July 2002). This document encourages the promotion of the management of land for biodiversity, for promoting education, collating and distributing wildlife information and exchanging information on best practice

for managing parks for wildlife. It sets out criteria for designating SMIs (Sites of Metropolitan Importance), the top tier of nature conservation designation in London, of which the nearby Hyde Park and Kensington Gardens is one.

- 3.15 The Royal Parks has a statutory duty, under the **Countryside and Rights of Way Act 2000**, to further the conservation of biological diversity in the UK. Implementation of the biodiversity strategy and action plans is being explored further through the Royal Parks Biological Recording Project.

## LOCAL PLANNING CONTEXT

- 3.16 St James's Park and The Green Park are Crown Land and since April 2006 has had to comply planning matters with local authority planning policies, which are currently set out in the City of Westminster UDP (Unitary Development Plan). The Royal Parks are notified of any planning applications within 800 metres of the Park boundaries, which in the opinion of the local authority could affect the Parks' amenities.

### City of Westminster Unitary Development Plan<sup>1</sup>

- 3.17 The statutory policies relating to both Parks are contained within the City of Westminster Adopted Unitary Development Plan (UDP 1997) and the Replacement Unitary Development Plan (RUDP 2004).
- 3.18 The RUDP describes the St James's area (a sub-area of the London Plan Central Activities Zone CAZ, see paragraph 3.8 above) *'Over half of the area is covered by the Royal Parks of Green Park and St James's Park. The area also boasts the highest concentration of listed buildings and street furniture in England. The streets have remained in original 18th century grid pattern. The buildings in most parts of St James's also generally reflect the architectural style of the 18th century.... The character of the area has an atmosphere of grandeur - reflected by the many fine buildings and headquarters of major companies - and it is punctuated by the Royal Parks.'*
- 3.19 The Parks lie wholly within the City of Westminster and are designated as a **Conservation Area** described as area **41: Royal Parks** covering Kensington Gardens, Hyde Park, St James's Park, The Green Park and Buckingham Palace Gardens. Policy **DES 9** relates to Conservation Areas, aiming to preserve and enhance their character, appearance and settings. A Conservation Audit of all Conservation Areas in the city is currently being undertaken. A short leaflet has been prepared on the Royal Parks covering historical background, listed buildings, key features etc. Policy **ENVI6**<sup>2</sup> Trees and Shrubs states that all trees in conservation areas... will be safeguarded unless dangerous to public safety or in rare circumstances where felling is required as part of a replanting programme.

---

<sup>1</sup> In 2004 the Government introduced a new plan making system under the provisions of the Planning and Compulsory Purchase Act 2004. Unitary Development Plans will gradually be replaced by a set of documents which will be called the Local Development Framework (LDF).

<sup>2</sup> The policy number references are taken from the Replacement Unitary Development Plan 2004 (RUDP)

- 3.20 St James's Park, The Green Park and Buckingham Palace Gardens are together identified as an area of **Metropolitan Open Land (M104)**. Policy **ENV 14** in the UDP states that the City Council will support the protection and enhancement of Metropolitan Open Land (the Royal Parks), their settings including views from them. *'In accordance with the London Plan, there will be a presumption against inappropriate development on Metropolitan Open Land (MOL), and developments will only be acceptable where it is ancillary to the open space use, is limited to small scale structures, and where it does not detract from the open character of MOL.'* Permission will not be granted for developments that will harm views into or out of the Royal Parks. This is further emphasised under policy **DES15** Metropolitan and Local Views. **ENV4** Planting Around and on Buildings states that planting on flat surfaces or roofs will be encouraged whilst ensuring views out of the Royal Parks will not be compromised.
- 3.21 The UDP indicates that Westminster's needs for metropolitan and district parks are largely met by the Royal Parks. The plan notes that the Royal Parks are administered by The Royal Parks and the City Council has no direct control over them. It refers to the need for regard to policy **DES 12** Parks Gardens and Squares which sets out a criterion based policy in relation to (a) development adjacent to open spaces and (b) development on or under open spaces.

### **One City - A White Paper for Westminster 2006-11 (November 2005)**

- 3.22 This consultative document is Westminster City Council's proposed vision for the next five years, replacing the previous Civic Renewal programme. 'One City' is based on a vision for Westminster that is bound together by strong communities, supported by excellent services. To achieve this there are four programmes of activities:
- **Order**, covering the street environment;
  - **Opportunity**, covering social service, leisure, housing and children's services;
  - **Enterprise**, including plans for business; and
  - **Renewal**, covering the future of our streets and parks.

### **Westminster Biodiversity Partnership Local Biodiversity Action Plan 2000 (LBAP)**

- 3.23 In addition and complementary to the National and London-wide BAPs a Local Biodiversity Action Plan has been prepared for the City of Westminster. This was prepared by the Westminster Biodiversity Partnership, which includes Westminster City Council, The Royal Parks Agency, The Grosvenor Estate, London Wildlife Trust, The London Natural History Society, London Zoo and The Thorney Island Society. The LBAP identifies priority species and habitats for protection in the City, which are covered in a series of habitat and species action plans (HAPs and SAPs), including a specific HAP for Parkland.

3.24 The Parkland HAP states that the six central Royal Parks within Westminster cover nearly 17% of the city's total area and that they '...are the single most important reservoir of wildlife within Westminster, and anything which enhances the biodiversity of this area will have a positive impact on the whole city.' In particular, the two Royal Parks detailed in this management plan are described as follows, 'St James's Park is picturesque and crowded, but noted for its bird life, whilst The Green Park is a simple area of grass and trees.... the large areas of open turf with tall trees in Hyde Park and The Green Park are particularly favoured feeding areas for the mistle thrush.'





## 4.0 HISTORICAL CONTEXT

---

4.1 A more detailed historic analysis is contained in the respective Historical Surveys of St James's Park and The Green Park (LUC 1981). An archaeological assessment and field evaluation was undertaken by the Royal Commission on the Historical Monuments of England (RCHME) in 1994. The latter notes five individual sites in the gazetteer, namely:

- site of a pond;
- 1660 ornamental canal;
- earthworks representing duck decoy channels;
- Duck Island;
- site of the Rendell suspension bridge of 1857.

4.2 In addition, for The Green Park, the RCHME Survey notes some thirteen individual sites in the gazetteer ranging from the now lost seventeenth century ornamental pond, ice and snow houses dating from the reign of Charles II to Second World War barrage balloon sites.

### ST JAMES'S PARK

4.3 The history of the Park can be conveniently broken down into four basic phases. The land was originally enclosed by Henry VIII in 1531 as a private park for his new St James's Palace. After the Restoration of the monarchy in 1660, Charles II initiated a comprehensive reconstruction of the Park in a formal style with avenues and canals, granting some public access, and attaching and enclosing The Green Park. In 1827 the inner park was reconstructed in the picturesque style to designs by John Nash and since this time has been progressively modified as a public park.

#### Early History

4.4 St James's Park is located on former Thames-side marshlands. The terrain formed a shallow basin containing the braided channels of the Tyburn Brook, to the rear of the Thames-side Whitehall Palace and close to the discharges of the Tyburn into the Thames around the historic site of Thorney Island. Henry VIII acquired the estate from Eton College in 1531 and built St James's Palace to the north and chose the site to develop a new park.

#### The First Park (1531 – 1660)

4.5 Henry VIII's appetite for outdoor recreation and sports established important themes for the Park, which served both the established Whitehall Palace and Henry's new retreat of St James's Palace. In this early period, the Park appears to have been largely a tract of open countryside with channels, waterside trees and ditches. The Elizabethan period saw the construction of an east-west avenue on the line of The Mall confirming the access between the two Palaces. James I initiated a collection of waterfowl, and made an unsuccessful attempt to establish a mulberry garden (although the name was adopted for a nearby drinking house), while Spring Gardens at the north-east

corner of the Park became a public pleasure ground. In summary, the first St James's Park established the boundaries of enclosure, provided the alignment of the later Mall as an avenue and introduced the themes of water and wildfowl.

### **The Restoration Park of 1660**

- 4.6 During the Commonwealth, the Park was retained and restocked with deer, but closed to public access. Following the restoration of the monarchy in 1660, Charles II vigorously initiated the second St James's Park with extensive design and construction in a style of contemporary French landscape design, under the direction of French gardeners Gabriel and André Mollet. The park was created around a new central canal, some 2,800 feet long by 120 feet wide (850m x 33m) and was planted on each side with an avenue. The new formal layout also included double avenues along the line of Birdcage Walk, The Mall and in a radiating pattern of avenues (the *patte d'oie*) at the Whitehall end of the Canal. The Green Park was enclosed and appended as Upper St James's Park in 1668. The Mall became increasingly significant as a promenade in the eighteenth century and established the basis for the later construction of a processional avenue.
- 4.7 Few modifications were made under subsequent monarchs William and Mary who preferred the newly acquired Kensington Palace to Whitehall. The reign of Anne, when the court took up residence in St James's Palace, is significant for the development of the Park for two reasons. Firstly, Henry Wise set about conserving and strengthening the existing landscape layout and secondly, the Duke of Buckingham had his new Buckingham House constructed at the west end of the Park at the intersection of the vistas of The Mall and the canal. This was a development of utmost significance to the future of the Park and created the appearance of a park laid out for the house. This significance was recognised by George III who bought the house and grounds in 1761 and later by George IV and Nash who exploited its pivotal Royal setting.

### **The Picturesque Inner Park of 1827-1829**

- 4.8 During the 1820's there was much activity on the periphery of the Park with the redevelopment of Crown lands including Carlton House, the barracks and Buckingham Palace itself. In this context instructions were given for the redevelopment of the Park. The inner part of St James's Park was remodelled in the picturesque manner to the design of John Nash as a consequence of these adjacent developments but also at the express instruction of Parliament, providing public access "*as a Pleasure Garden, with sloped walks towards the water, and ornamental shrubberies*" (report of the Commissioners of Woods, 1823). The canal was converted into a naturalistic lake with islands - an idea which had first been put forward in a plan by Lancelot Brown after his appointment in 1764 as 'Surveyor of his Majesty's Gardens and Waters.'
- 4.9 Nash carried this out with consummate skill, reshaping the old canal to form a new sinuous lake with islands revealing romantic views to the new Buckingham Palace (also being remodelled by Nash at this time for George IV) to the Horse Guards and to the old and new properties along The Mall

and Birdcage Walk. The ground form was remodelled around retained mature trees; and new informal plantations and shrubberies were established to break up the formal lines of the earlier layout. Serpentine paths dropped to the lakeside from the outer framework of peripheral avenues and Horse Guards Parade. The formal avenues of The Mall reinforced – older trees retained and new ones planted

### **The Park since 1830**

- 4.10 The inner park which survives today is substantially that of Nash's design, albeit minor adjustments in the layout have been made, including the bridge (originally a suspension bridge across the lake in 1857) and the addition and realignment of some paths. The most significant changes have been brought about by the introduction of vehicles to the outer park and an expanded road system. In 1901 Sir Aston Webb won a competition for the Queen Victoria Memorial; The Mall was widened to become a new sixty-five foot wide triumphal roadway with Admiralty Arch at the east end and with new tree-lined avenues to both sides. In the front of Buckingham Palace, the new memorial was surmounted by a statue of Queen Victoria by Sir Thomas Brock; and the construction of the Dominion Gates together with substantial road works resulted in a foreshortening of Nash's lake.
- 4.11 The encirclement of the inner park by traffic was completed in 1916 with the opening of Horse Guards' Road. Splendid new civic buildings, most strikingly the Foreign Office, were constructed around the eastern part of the Park in the latter part of the nineteenth century, positively adding to the quality, scale and setting of the Park. During the twentieth century a number of small park buildings, facilities, new horticultural areas and amenities have been added within the Park, and the skyline views have been altered by the building of office towers to the south of the Park and, more recently, by the London Eye which is conspicuous from the bridge.

### **THE GREEN PARK**

- 4.12 The Green Park, like St James's and Hyde Parks, is located on one of the steps formed by the river terraces – the long low ridge of Lower Terrace Gravel still being evident alongside Piccadilly. This terrace was bisected by the Tyburn Brook flowing down to the Thames from its source near Hampstead, forming a gently curving valley which formerly led to a broad marshy swamp in the area of the present day Victoria Memorial Gardens. The Tyburn Brook has subsequently silted up and its much reduced flow is confined to a culvert, although the undulating landform of the valley remains a distinguishing feature of the Park.

### **The Formation of the Park (1668)**

- 4.13 The Green Park remained unenclosed and virtually unmanaged until 1668, when Charles II acquired land from the Davis-Grosvenor and Pultney estates and, together with Crown land, enclosed "Upper St James's Park" to secure a link between St James's and Hyde Parks. The Upper Park at this time presented an informal rural landscape of pasture, meadow and trees. It was enclosed with a wall, provided with a Ranger's Lodge, and adjoining

plantations, and served as a small Deer Park and game reserve as St James's became increasingly public and popular.

### **Early Development (1702- 1799)**

- 4.14 Henry Wise, Royal Gardener to Queen Anne, was responsible for several new developments in the Park including the making of a new pond as recorded in 1703. A plan of 1725 (attributed to Bridgeman) shows this as a reservoir or canal in the north-east corner of the Park. The creation of the Queen's Walk along the eastern boundary and serving the Queen's Library for Queen Caroline in 1730 is also attributed to Bridgeman. The reservoir, adorned with a fountain and called the 'Queen's Basin', and the walk were fashionable attractions in the Park throughout this period. A temporary structure, the Temple of Peace, was constructed in the Park (1749) to celebrate peace at the end of the war of the Austrian Succession.
- 4.15 George III's acquisition of Buckingham House (1761-2) led to a reduction in the extent and area of the Park, as land was annexed to create a garden for the new palace. Further reductions in area and a sharper definition of the eastern boundary occurred with the formalisation by leaseholds of garden encroachments on Queen's Walk (1769-1799).

### **The Nineteenth Century Park**

- 4.16 In 1814, The Temple of Concorde was built to celebrate 100 years of the Hanoverian dynasty. Like its predecessor, the Temple of Peace (1749), in similar location, it was destroyed by fire during the opening fireworks display. In 1823, there had been such deterioration in the quality of the Park that initiatives were taken to put things in better order. Works included removal of some existing features (Tyburn Pool filled in 1837, Ranger's Lodge demolished 1841-42, Queen's basin filled in 1855), the formalisation, by straightening, of Constitution Hill and the construction of Wellington Arch facing Decimus Burton's Hyde Park Gates in 1828 (it was later repositioned to face down the axis of Constitution Hill and the statue of Wellington was removed to Aldershot and later replaced with the Quadriga). A significant development occurred in 1826 when, on the instruction of the King, the Park was thrown open for public use. In the latter part of the century several proposals were made to introduce a more formal layout including walks, terraces and balustrading along the Piccadilly boundary, although most of these were never implemented. New framework planting was concentrated at the edges of the Park and the overall character remained largely open.

### **The Park Since 1900**

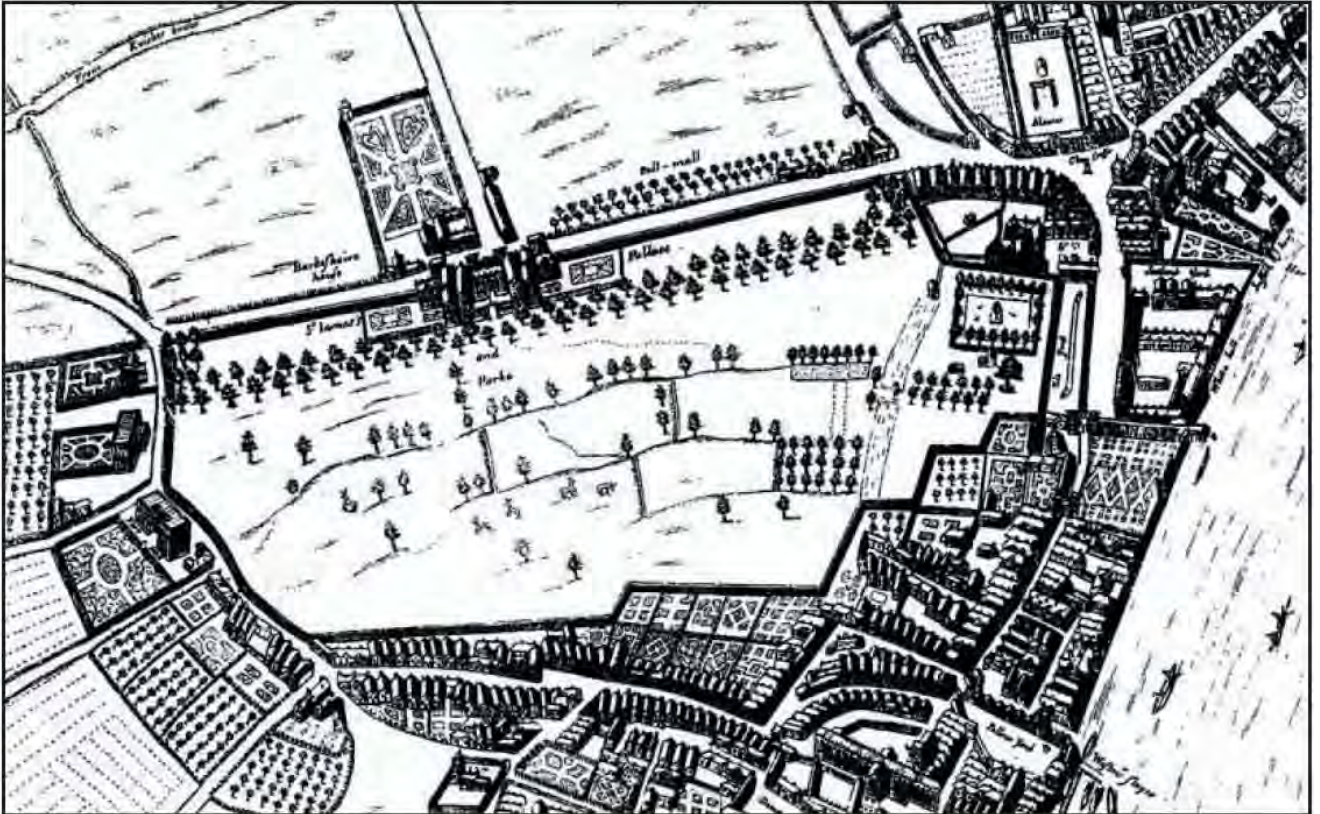
- 4.17 By the beginning of the twentieth century The Green Park had developed in to something like its present form – an informal composition of grass and trees set against the undulations of the Tyburn valley. A major change occurred in 1908, as part of the Queen Victoria Memorial layout with the planting of the double avenue of the Broad Walk, leading from the newly constructed Canada Gates and, extending northwards to the relocated Devonshire Gates on Piccadilly. Other additions included the bandstand

(now removed) and its ring of plane trees (still partly surviving) as well as the fountain, paths and lamp posts.

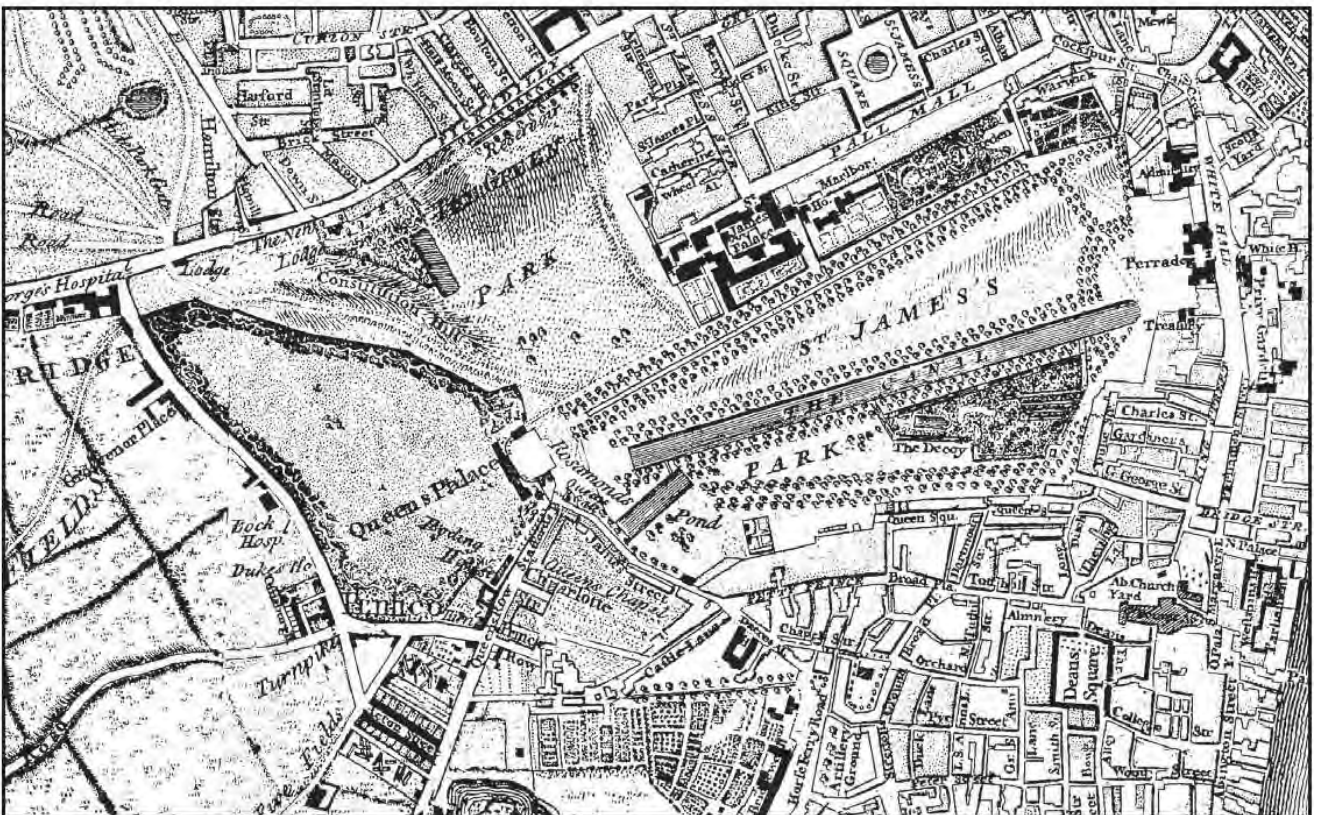
- 4.18 During the Second World War The Green Park was used for a variety of military and civil defence purposes which have left their mark on the surface of the Park as earthworks and parchmarks.
- 4.19 Construction works in association with Green Park Underground station have caused disturbance at the north west corner of the Park, both at the time of its original construction and subsequently in association with work on the Victoria and Jubilee Lines. Road improvements have also altered the Piccadilly and Hyde Park Corner boundaries. The north west corner of the Park has also been encroached upon to make way for the Apsley roundabout (1960), severing this part of the Park and taking its management away from the Royal Parks (currently with Westminster City Council). Recently (1994) a new artefact has been added in the form of the Canadian Memorial close to Canada Gates, and the Commonwealth Memorial was added on Constitution Hill in 2002.
- 4.20 In spite of a history of change, The Green Park has gained and lost features, and retained some of its early, almost rural atmosphere of woodland and grassland.



**Figure 4.1 Historical Context**



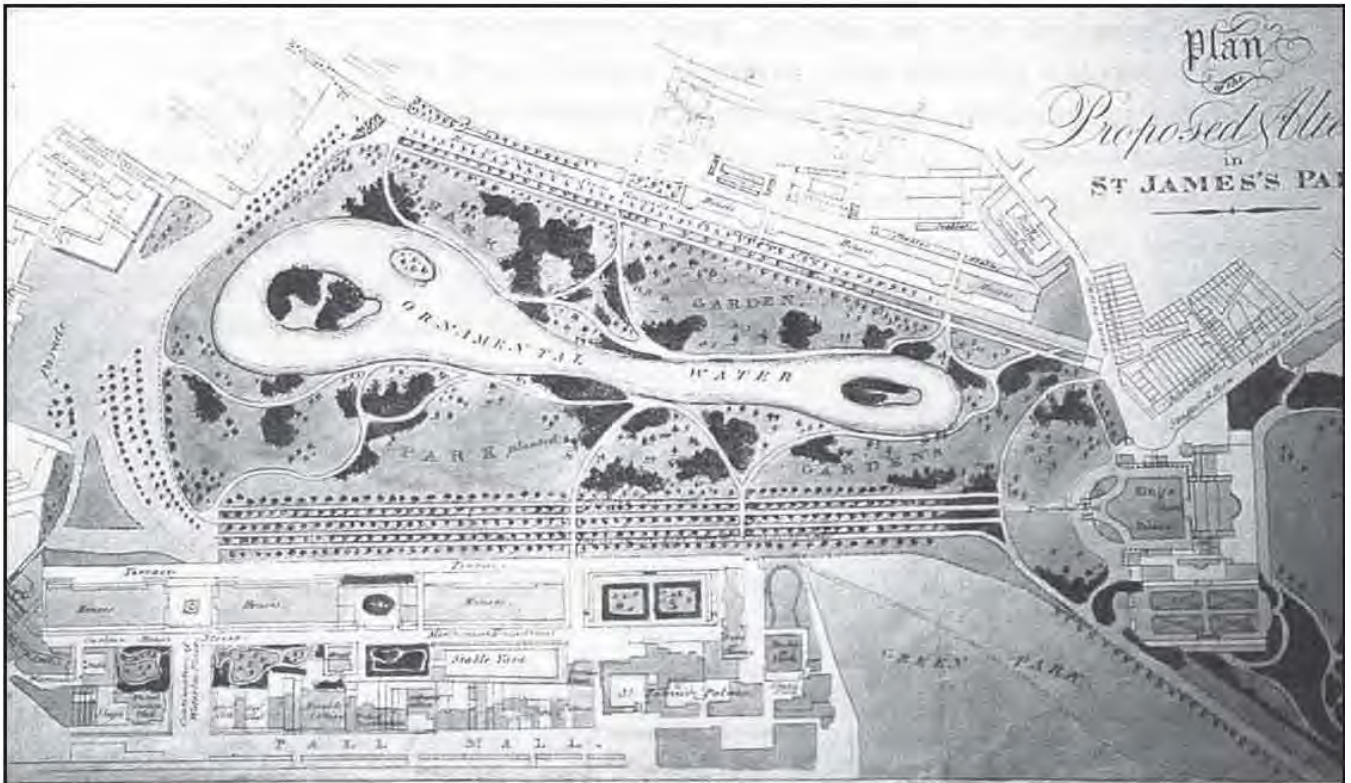
1685: St James's Park (from Sheet 5 of Wm. Faithorne's Exact Delineation of the cities of London and Westminster and the Suburbs) City of Westminster Archives Centre : edition of 1905 published by the London Topographical Society.



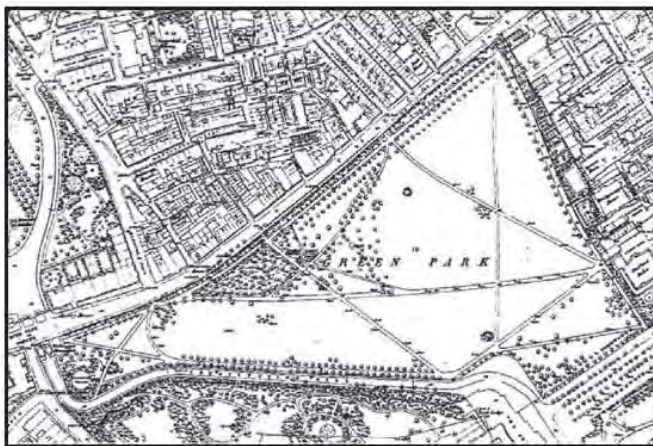
1769: St James's Park and The Green Park extracted from 'A Plan of London', published 29th April 1769 by John Rocque.



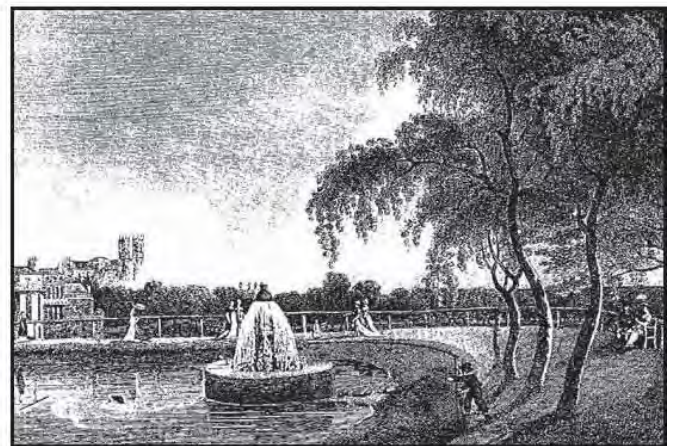
**Figure 4.2 Historical Context**



1827: St James's Park (note plan orientated with north at the bottom and south at the top.) Plan showing the proposed alterations designed by Nash, published by Ingreay and Madeley.



1869: The Green Park  
1st Edition Ordnance Survey map.



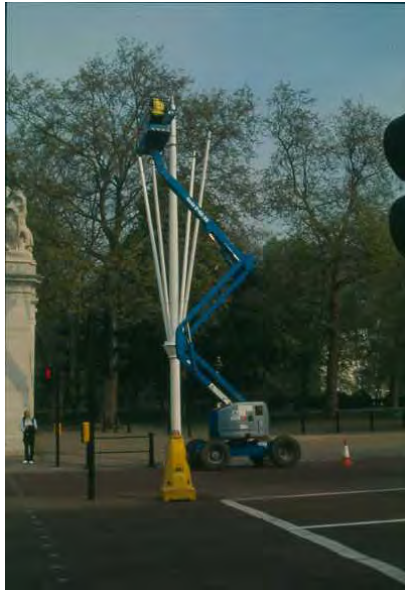
The Green Park: An early nineteenth century view of the Bason (removed before 1855)



## Figure 4.2 Photo Sheet



Pelican on a stroll



The Mall flag poles



Horse Guards Parade



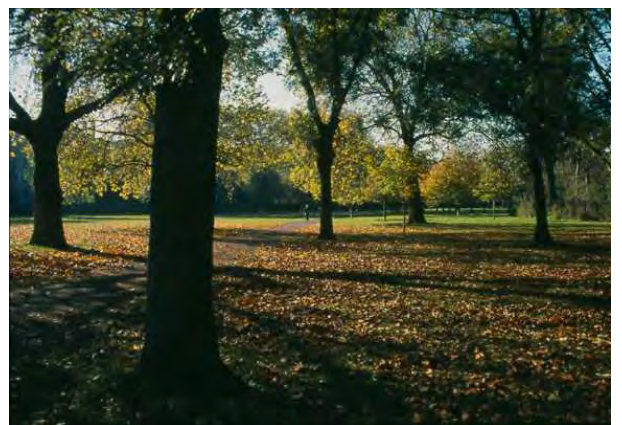
Event at the Artillery Memorial



Police Memorial



The Jungle Border



Autumn day in Green Park

## 5.0 PHYSICAL DESCRIPTION

---

- 5.1 St James's Park is the larger of the two parks covering 34.5 ha (85.3 acres) compared with The Green Park, which covers 20.8 ha (51 acres). The following chapter summarises the underlying physical features of St James's and The Green Park.

### TOPOGRAPHY

- 5.2 The Green Park shares with Hyde Park and St James's Park a primitive background as a transition zone from the deciduous forest stretching southeast from the Chilterns to the freshwater marshes of the Thames.
- 5.3 In **The Green Park** this primitive origin is reflected in the distinctive landform of a ridge of the Lower Terrace Gravels, which runs alongside Piccadilly, rising to 19.5 metres in the north-east corner and then gently sloping down to the south-east towards The Mall to 6.4 metres. The valley of the Tyburn Brook is a strong feature in the upper central part of the Park along with the tributary valley to the west, fading into the flatter southern areas. The general appearance is that The Green Park is situated on undulating ground, particularly apparent at the western end of the Park where the raised ground is punctuated by two knolls.
- 5.4 The ground in **St James's Park** is also gently undulating – reflecting its original form where the channels of the Tyburn Brook formed a shallow basin, modulated by the construction and later adaptations of the lake (by Nash) and disposition of mounding through disposal of fill.

### GEOLOGY

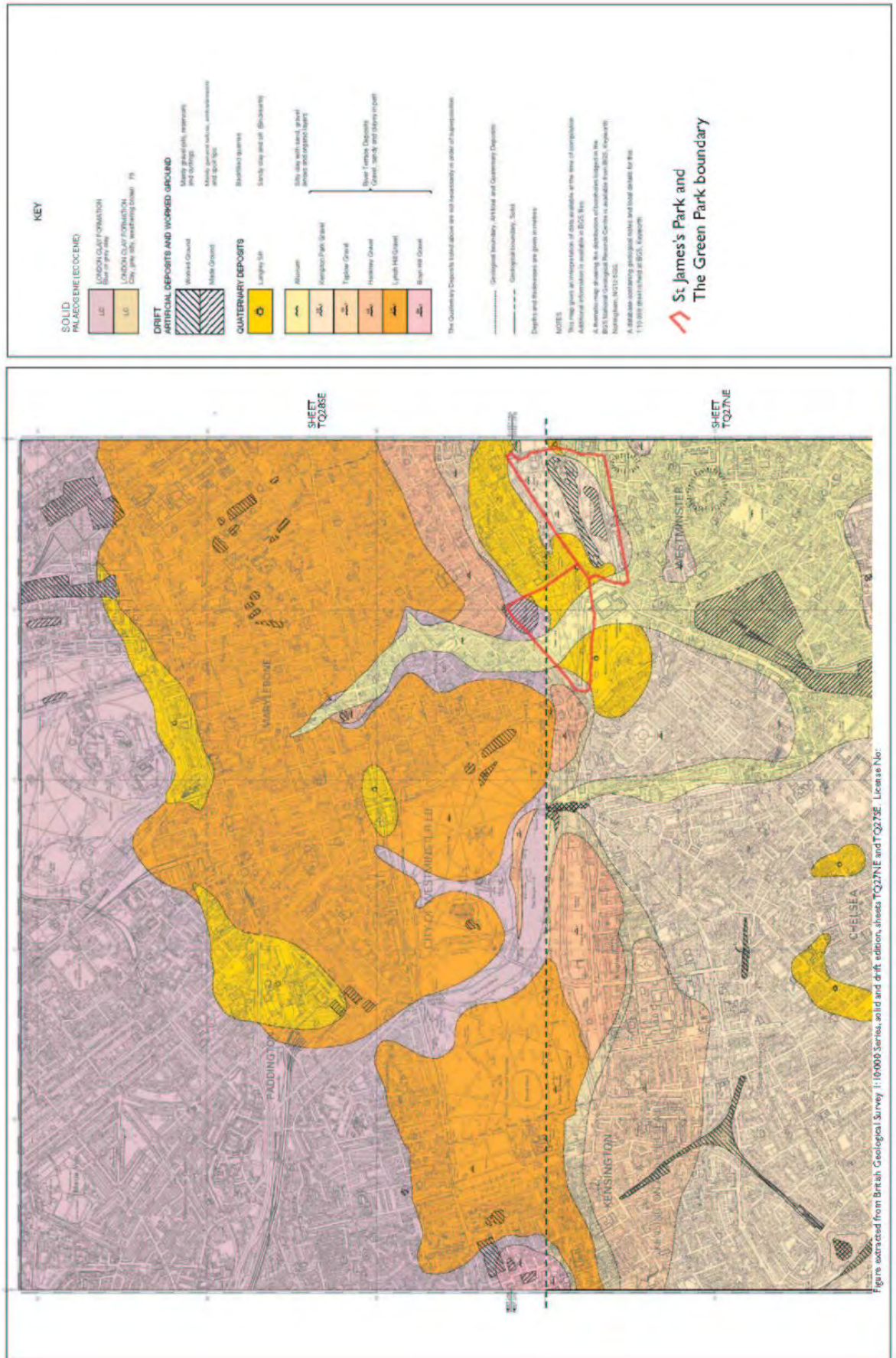
- 5.5 The geology of the two Parks is illustrated in figure 5.1. The solid geology of London clay is mainly overlain with floodplain gravels in St James's Park in contrast to The Green Park where the drift geology is dominated by sandy silt and alluvium. The band of London clay running roughly north-east across The Green Park is historically where the Tyburn Brook would have cut through.

### SOILS

- 5.6 Soil maps indicate that the soils across the two Parks are loamy in texture but vary between freely draining acid loamy soils to more clayey, naturally wet soils. The soil fertility of these soil types is naturally low to moderate.
- 5.7 In reality, it is assumed that the natural soils of the Parks have been altered considerably over the centuries by the extent of surface disturbance from the landscaping of the Parks and through other activities for example in The Green Park small-scale gravel workings in the 17<sup>th</sup> century and the spreading of World War II bomb damage rubble.



Figure 5.1 Geological Map



## Hydrology and drainage

- 5.8 The Green Park still retains the memory of its origins as a rural-pastoral landscape with its undulating landform and gentle valley of the Tyburn Brook. The brook itself, flowed southward from its source near Hampstead and cut through the gravel ridge, entering what is now The Green Park in a distinct curving valley leading to a broad marshy sump in what is now the Queen Victoria Memorial Gardens. During the 17<sup>th</sup> century the brook silted up through the lower part of The Green Park forming a pool. The spring lines at the outcrop of the clay in the north-east corner of the Park led to the formation and extension of the reservoir of the Chelsea Waterworks Company between 1725 and 1855. By the mid-19<sup>th</sup> century these features had disappeared and there is now no surface water in the Park, although the geological conditions remain making certain areas of the Park prone to drainage difficulties during periods of high water table e.g. around the former bandstand and in the lower ground.
- 5.9 A culverted storm water drain now carries water under the valley of the Tyburn Brook. The historical survey showed numerous services pass through The Green Park. As a result there are some 99 manholes/inspection chambers but these are reasonably well laid and located reducing any maintenance issues. Any future services should be located very carefully so as to have no adverse impact on the Park. In addition there are some 74 drainage gullies/gratings, mainly associated with path drainage.
- 5.10 St James's Park was once a marshy watermeadow, the drainage and water supply later improved and controlled in the reign of James I. As illustrated in the Historical Survey, the use of water as an element in St James's Park can be traced from the ditches, channels and 'pools' of the seventeenth century plans, to the formation of the formal canal in 1660 and later the adaptation by Nash (c.1829) to the existing informal lake.
- 5.11 The lake covers around 20% of the area of St James's Park and is fed by an artesian well, supplemented by local water catchment. A complex pumping system located in the Park historically supplied the Serpentine and the lake in Buckingham Palace Gardens until provision of local boreholes led to the pumping system being made redundant in the late 1990's. An aeration system installed in 1996 led to the dismantling of the Horseshoe fountain at West Island and a fountain near Duck Island Cottage. The aeration technique did not prove successful and was subsequently abandoned. A series of more recently installed circulation pumps housed on Duck Island now creates a flow of water around the lake. The Prince of Wales fountain opposite Inn the Park was restored in 2006 and there are proposals to restore a fountain by the Cottage.
- 5.12 The combination of substantial waterfowl populations, general litter debris and leaf litter mean that water quality is not good despite the leaf screen on the island and local removal. Recent reed bed planting around the perimeter of the lake is intended to help improve water quality through filtration whilst also enhancing the visual appearance of the lake edge and encouraging wildlife. The quality of the water from the well and in the lake is monitored through twice yearly testing in the spring and autumn.



## **PART 2: DESCRIPTION, USE AND CHARACTER**

### **6.0 NATURAL FABRIC**

---

- 6.1 This section describes the different 'living' components that make up the essential character of St James's Park and The Green Park— the grass, trees, shrubs, hedging and horticultural display areas. It seeks to describe how these are important to the physical appearance of the Park for visitors and to determine any other contributions that these make, such as wildlife habitat and historical value.

#### **TREES**

- 6.2 St James's Park and The Green Park have a distinctive and characteristic tree population that includes:
- the formal avenue pattern, mainly made up of London Plane, established in the seventeenth century, which still provides the main visual structure of the Park; the age structure is mainly mature planes of a similar age;
  - more informal planting, some to the Nash design within the inner sections of both Parks; St James's Park containing approximately 1250 trees of 35 different species (870 in the inner park); and The Green Park containing approximately 620 trees including many thorns within the meadow area.
- 6.3 The Royal Parks Arboricultural Officer has commenced a programme of surveying trees and developing an electronic tree database. A detailed tree survey of the Park is undertaken by the Arboricultural Officer and Arboricultural consultants each year, to conform to The Royal Parks Tree Risk Management Strategy. Continued assessment provides a detailed overview of the tree population in terms of age, species, condition and health. The Historical Survey (LUC, 1986) and Tree Strategies (Green Park Tree Strategy Colvin & Moggridge, 2000 and Tree Management Strategy St James's Park, Harraway Tree Services, 2001) for each park should be referred to for further detail on the historic tree population and structural plantings.
- 6.4 The age structure of the tree population falls into two main areas: the Outer Park made up of the avenue planting in early 1900s of The Mall, Birdcage Walk and Constitution Hill; and the Inner Park structure including planting around the lake in the 1800s and trees within the 37 plantations. Many of the Inner Park trees were planted as part of the floriferous planting beds (many designed by Nash). Though many elm trees were lost the general essence of the Nash landscape remains and have been restored in areas close to the play area. The Royal Parks Tree Strategy being produced by the Royal Parks Arboricultural Officer considers the management and maintenance of the trees and is read alongside the Tree Risk Management procedure. The management plan considers the placement of trees and removals in terms of their landscape value of quality. Issues such as conflicts with the flag poles on The Mall, over shading grassy areas, the 'Nash' design and strategic views need to be taken into consideration. The choice of species and location will

be considered carefully in relation to the character zones within the Park, although the importance of the value of the trees as a potentially important amenity feature, and also as a habitat, incorporating complex biodiversity relationships must also be measured.

- 6.5 Succession planning is underway for the weeping willows at the edge of the lake; these make a significant contribution to the fringe and setting of the lake but are becoming unstable and will need replacements.

### **Management Issues: Trees in Parkland**

- Maintenance and development of an accurate and up-to-date computerised baseline information for the trees based on tree position, age group, species and condition (NATI)
- Maintenance of the informal distribution of the trees throughout the Park; being aware that in some areas tree planting has encroached on grassland that conflicts with the conservation of the heritage layout of the Parkland trees. (CONI; NATI).
- The diversity of tree species and the associated biodiversity of trees, with particular regard to decaying wood habitats will be considered in maintenance and management programmes.
- Ecological enhancement of lakeside e.g. through implementation of the management plan and the addition of (native species) marginal planting (NAT4; CHA6).
- There are opportunities for interpretation and information for visitors particularly regarding the historic and nature conservation value (PUB1; PUB5).
- Consideration of the impact of trees on views in/out of the Park (NATI). For tree planting, each station should be located for a specific purpose and the species and location considered in terms of its ecological and visual contribution to the Parks.

### **GRASSLAND**

- 6.6 St James's Park and The Green Park grassland areas are predominantly rye grass due to the intensive use by visitors and the tree canopy cover. Various seed mixes have been tested particularly in shaded areas as well as some areas of meadow seeding near the Inn the Park Restaurant. In most areas the grass is managed as amenity turf though there are areas to the north-west corner of The Green Park that are managed in a more informal manner, which has proved to be very successful. The underlying ground conditions close to Green Park Underground Station affect the quality of the sward. The use of areas for informal football, deck chairs and Gun Salutes contribute to wear and tear in particular areas.

### **Management Issues: Grassland**

- Throughout the Parks it is generally considered the grassiness of the Park should be maintained and that areas should not unnecessarily be



taken over by hard surfacing or tree planting. However, there are areas that could be considered for hard surfacing to accommodate activities where the grass is failing (NAT2).

- Grass failure in some areas is due to dense tree canopy cover. Tree thinning should be considered to improve the grassy quality of these areas (NAT2).
- The Queens Gardens, Treasury, Foreign Office and Commonwealth office lawns should continue to be managed as high quality lawn due to their location (NAT2).
- The roof of Inn the Park is managed as 'meadow' as it is not irrigated. There is the opportunity to introduce wildflowers in this area.
- Lakeside grass areas were originally fine lawn. A more informal approach has been introduced allowing ox-eyed daisies, bugle and cow parsley to grow by the waterside. Perennial weeds are removed from all areas. There is a more informal approach on south side of the lake moving to a more formal nature to the west and north. (NAT2, 4 &5).
- Naturalised bulbs are found in large areas of throughout both Parks. (NAT3).
- To alleviate the compaction caused by high numbers of visitors, an annual programme of de-compaction on an area-rotational cycle is in place. (NAT2; PUB 6 &7).

## **HORTICULTURAL DISPLAYS**

- 6.7 The horticultural displays at St James's Park are significant in terms of the size, location and national reputation. The areas of bedding displays in front of Buckingham Palace (The Queens Gardens) are viewed the World over through televised Royal and National events. Bedding out takes place twice a year (spring and summer) at the Leafyard, Storeyard and Queens Gardens. Other areas include the Jungle border by Inn the Park.
- 6.8 There are several Nash inspired floriferous shrubberies in St James's Park and research has been undertaken to restore some of the original planting styles and locations. Many of the other shrubberies are over mature and a programme of replanting is underway on an annual basis. Boy Statue, Artillery Memorial & Leafyard have all undergone re-planting within the last 18 months. Duck Island Cottage planting area provides a particularly attractive setting for perennial planting which is also found in an area of the Storeyard planting.
- 6.9 The rose beds, known as the 'Queen Mother Roses', have over the years been rationalised; as the roses have suffered from over shading in their current location. More suitable planting in this area is under consideration though the association with the Queen Mother will be retained. The unveiling of the Queen Mother Memorial at the base of George VI steps in February 2009 will provide an opportunity to reassess the horticultural display in this area.

## **Management Issues: Horticultural Display Areas**

- Maintenance of all horticultural display areas to a very high standard. (NAT3).
- Maintaining specialist horticultural displays requires good staff and good staff retention to manage these areas. (NAT3).
- The Dell (rockery) water feature to be retained and planting to be altered to be more in-keeping with the Nash Landscape of the Park and less domestic in appearance. (NAT3).
- Conserving the distinct characters and individuality of different areas of planting. Considering the interpretation of particular areas that are inspired by Nash. (CON1; NAT3; PUB 5).
- Retaining textural diversity and critical seasonal connectivity for sound ecological management. Mowing regimes to be adapted to retain selected species, create height profiles and retain longer grass refuges and corridors within the sward. (NAT 2 &4)
- Consideration of drought conditions. Choice of species particularly in the Leafyard location. The Queens Gardens are irrigated using a pop-up system that operates at in the evening. This should be considered for the Leafyard and Storeyard areas. (NAT3).

## **ECOLOGY AND WILDLIFE**

- 6.10 The park, as a whole, has been identified as a site of Metropolitan Importance for Nature Conservation. The main features of nature conservation interest are the trees, marginal planting, waterbody and grassland with importance recognised at the national level. The areas of secluded habitat on the islands are also of great value. The location of the Park on a migration through London ensures that it continues to attract a diverse and interesting collection of bird species. The whole area has significant biodiversity potential under appropriate management. Further detail on the main areas of interest and habitats is given below.
- 6.11 Currently there is little detailed, up to date, ecological data for the Park. Existing information includes the surveys carried out by the London Ecology Unit in 1983. There is small volunteer bird recording group who conduct standard monthly monitoring walks supported by the Central Royal Parks Wildlife Group. Currently there is uncoordinated ad hoc survey data of bats. The existing historical data will be managed under an improved system set up under a partnership arrangement with the Greenspace Information for Greater London. A baseline botanical survey has been conducted in St James's Park during 2008 under the management of the community enclosures.
- 6.12 Birds have been monitored by volunteer Roy Sanderson along with the wildlife officers. See Appendix A for the lists of birds found in the Parks. Volunteer counts complement those taken by the Wildlife Officers

- 6.13 Duck Island and West Island have limited public access at present and are managed for biodiversity, wildlife and nature conservation. Access for education purposes (for conducted groups only) could be extended by the development of the pumphouse as an education resource with interpretation. However, access to other parts of the island should be restricted to maintain the unique and precious undisturbed areas for the benefit of the wildlife.

### **Management Issues: Ecology and Wildlife**

- Need for ecological baseline surveys information collating data on all species and habitats and undertake subsequent monitoring. This is particularly important with the planning for the 2012 Olympics and associated cultural events (NAT4);
- Integrated habitat management appraisal and data management system needs to be in place (NAT4);
- There is potential to further enhance the value of the water edge habitat and the island areas. These areas should remain secluded havens for wildlife as they are very valuable in such a central London location. Public access to these areas should remain restricted (NAT5);
- Improve accessibility and interpretation of wildlife and ecological aspects of the Parks (PUB 5);
- Avoiding use of molluscicides, herbicides and fertilisers to encourage wildlife(NAT4);
- Lighting levels within the Park need to be kept to a minimum to avoid disturbance to wildlife (NAT4); and
- Any planting should consider the ecological value as well as the landscape or aesthetic value particularly relating to tree planting (PHY 1).

### **WATER BODY AND LAKESIDE**

- 6.14 The waterbodies that were once within The Green Park have been removed. In St James's Park the most significant feature is the lake with its two islands (Duck Island and West Island) and the associated lakeside. The lake itself is a concrete lined waterbody with steep sides in many places. The lake is fed top down by a system of 5 artesian wells located within the Park (indicated on plan Figure 6.1). A sluice gate is used to regulate the water levels that is connected to the main trench. There is also an emergency valve should there be a potential flooding problem. The lake is managed to reduce nutrients and maintain water circulation. The liner lets out water.
- 6.15 The lakeside planting, in recent years, has been managed to provide a diverse semi-natural edge to accommodate birds. Marginal planting areas have been introduced have been very successful in overcoming the difficulties of the saucer shaped liner.

- 6.16 Reedbed planting and establishment began as part of the nature conservation initiative in 1994. With great success as reed warblers and little grebes have been known to nest in recent years. The reedbeds have been expanded with the funding from the Reed Elsevier Trust corporate team building day in August 2005 in line with the London Biodiversity Partnerships targets for Reedbed Habitat Action Plan for central London.
- 6.17 Waterbody studies are undertaken for all the Royal Parks with recommendations and action plans each year.
- 6.18 The lake fish population should be monitored and managed by checking water quality and taking action (cleaning) as necessary. Other species and habitats should also be considered including dragon flies.
- 6.19 The islands have limited public access at present and are managed for wildlife and nature conservation. Interpretation to be considered (see Ecology and Wildlife section).
- 6.20 There are proposals to drain and clean the lake during the spring of 2009.

### Management Issues: Waterbody and Lakeside

- Silt build up needs to be addressed and sediment mapping would be useful. (NAT5).
- Leaking liner should be rectified and the water supply from alternative boreholes/wells investigated. (NAT5).
- Conflicts between the amenity value of the lake and nature conservation / ecology regarding the use by waterfowl (including the kept collection). (NAT4 & CHA5).
- The Waterbody management action plans need to be implemented to improve the quality of the water for wildlife. (NAT5).
- Management of waterfowl population could be review to assess the balance of wild and managed collection. (NAT5).

**Figure 6.1 Location of Wells in St James's Park**



## 7.0 BUILDINGS AND HARD LANDSCAPE FABRIC

---

- 7.1 This section describes the buildings, artefacts, boundary and hard landscape features in St James's Park and The Green Park. The key features described are identified on figure 7.1. Further details of the features summarised in this section can be found in the Inventory of Artefacts which was assembled in 1981 as part of the Historical Survey of each park.

### Buildings and Main Structures

- 7.2 A summary of the main buildings and structures, their historic origin and current status is set out below for each of the two Parks.

#### *St James's Park*

- 7.3 There are sixteen buildings or groups of buildings in St James's Park as described below. The majority of these were added during the twentieth century apart from the older lodges.
- *Bird Keepers Cottage (often referred to as Duck Island Cottage c.1840, Grade II listed)*, historically important.
  - *Pumphouse on Duck Island (1915)* large brick building on the island; largely concealed by vegetation; now partly used as wildlife office/mess facilities.
  - *Storey's Gate Lodge (c.1855, Grade II listed)* serves as police station serving St James's Park and The Green Park.
  - *Buckingham Gate Lodge (Grade I listed)* formerly Gatekeepers Lodge.
  - *The Storeyard/Park office buildings*
  - *Ivy Lodge* – residential accommodation occupied by Park' staff.
  - *Inn the Park Restaurant (2004)* Located on the site of the original Cake House. 'Inn the Park' was built by Michael Hopkins and opened as a restaurant in 2004. This innovative building features a turf roof.
  - *Boat House* –(c. 1850-62) an open frame structure located on the north shore.
  - *The Leafyard* – open storage area enclosed by embankments and shrubberies.
  - *Public conveniences* there are two public convenience facilities, one close to the Park office (c.1960), the other at Marlborough Gate (originally c.1897, improved 1967/8) which includes disabled facilities.
  - *Children's Playground* at the western end of the Park which includes children's toilet facilities, attendants' office, sandpit and play structures.

- *Refreshment kiosks* - four small purpose built refreshment kiosk facilities feature at Marlborough Gate, Horse Shoe Bend, Artillery Memorial and the playground. These have recently been replaced with simple contemporary timber buildings with dark green frontage (also used in The Green Park) of a style complementary to the new 'Inn the Park' restaurant.
- *Bandstand* – a temporary structure is erected during the summer months located in the middle of the Park near Marlborough Gate.
- *Bridge (current structure c.1957)* crossing the lake replaced Rendell's suspension bridge (c.1857).
- *Lake* to Nash's instruction 1827, by adaptation of earlier formal canal; subsequently modified by Queen Victoria Memorial layout at western end 1908.

### **The Green Park**

7.4 Apart from site furniture (described in later paragraphs) The Green Park is notable for its absence of buildings and structures, although fine buildings surround it, including those along Piccadilly on the north side, with Buckingham Palace to the south and Lancaster House and numerous other buildings to the east. This has not always been the case, an icehouse (1669-late 18<sup>th</sup> century), Old Lodge (1710-1769) and a Deputy Rangers Lodge (demolished in 1841-42) previously existed on the northern boundary; two massive temples of Peace (1749) and Concorde (1814) featured in the southeast of the Park; and a bandstand was situated near Queen's Walk (1913-1980). More recently the Buckingham Palace ticket office has been removed from The Green Park having found alternative accommodation adjacent to the Palace. The only remaining buildings are:

- *Public conveniences* located within the entrance to Green Park underground station.
- *Refreshment kiosk facilities* (identical to those in St James's Park) feature in the Park at Ritz Corner and behind Canada Gate

## **Monuments and Main Artefacts**

### **St James's Park**

7.5 There are many important artefacts and monuments at St James's Park, a number of which are statues and memorials located in the outer park, mainly dating from the twentieth century.

- *Boy (c.1863, C.H Mabey)* located on the edge of the inner Park close to Birdcage Walk
- *Guards Memorial (c.1922, Gilbert Leward)* - Located on the edge of the inner Park opposite Horse Guards Parade

- *Artillery Memorial (W.R. Colton)* Located on the edge of the inner Park close to the junction of The Mall and Horse Guards Road.
- *Queen Victoria Memorial (1905-1908, by Sir Thomas Brock)* (the fountain figures added 1924)
- *Captain James Cook (c.1914, by Sir Thomas Brock)* located close to Admiralty Arch.
- *Royal Marines National Memorial* - the original Graspan Memorial for Royal Marines lost in the Boer war was moved to its current location close to Admiralty Arch in 1946. The Memorial was improved in 2000 and is now the Royal Marines National Memorial.
- *National Police Memorial (2005)*
- *Duke of York column (c. 1829 by Smirke)*
- *George VI (William McMillan)* to the north of The Mall accessed via a double staircase leading to Carlton Gardens.
- *Lord Mountbatten, Lord Kitchener, Earl Roberts, Viscount Wolseley* – These statues are all located around Horse Guards Parade.
- *The Royal Naval Division Memorial (Lutyens)* relocated from Royal Naval College Greenwich
- *Bali Memorial (2007).*
- *Lake fountain installed 1966 (re-commissioned at the Swire Fountain)*
- *Cascade fountain in harbour wall, 1908* part of the Queen Victoria Memorial Gardens wall construction, originally carried the outfall from the fountain into the lake.
- *Memorial to King George and Her Majesty Queen Elizabeth* to be amended Feb 2009.

### **The Green Park**

7.6 The general absence of permanent statuary, monuments and ornament is characteristic of The Green Park.

- *Constance Fund fountain* – bronze and granite by Clack 1954 is a curiously urban feature set in this very informal location. The fountain does not work at present.
- *Dog trough* – adjacent to the Constance Fund Fountain, at the foot of a lamp post dates from 1933.
- *Canada Memorial (c.1994, Pierre Granche)* – contemporary sculpture dedicated to the memory of Canadian soldiers who served in the two world wars.

## Boundaries and Gates

### ***St James's Park***

- 7.7 St James's Park is bounded on all sides by roads, namely Birdcage Walk, Horse Guards Road and The Mall. The roads themselves are an integral part of the Park and on the northern boundary the Park boundary extends to include Marlborough Road and the steps and walkway around the Duke of York Memorial as well as Horse Guards Parade to the east. The outer park is integrated townscape with several entry points including the Dominion Gates and Admiralty Arch. The roads are punctuated by a series of grand gateways including Buckingham Gate (1857), Australia Gate and Canada Gate (both 1908), which links St James's Park and The Green Park.
- 7.8 The inner park is defined by a low metal rail with frequent entry points, the only major gated entrances are at Marlborough Gate (1908) on the northern boundary and adjacent to the Guards Memorial entrance (1922) opposite Horse Guards Parade. Some sections of path and path junctions in the inner Park are bounded by low hooped railings mainly to reduce trampling of grass or bed areas and to control access to the lake edge. Restricted areas within the Park include the leafyard and storeyard which are enclosed by fencing and planting.
- 7.9 There is no capacity for public car parking within the Park. Security restrictions prohibit public parking on The Mall and surrounding roads except for limited permit controlled tourist coach parking (up to six coaches) during daily guard change. Permitted controlled parking allowed on the north Horse Ride on The Mall to identified Government workers and other neighbouring organisations. Occasionally controlled parking occurs in association with events at Lancaster House and Buckingham Palace.

### ***The Green Park***

- 7.10 Roads bound The Green Park to the north (Piccadilly) and south (Constitution Hill) culminating in the major junction around the Wellington Arch to the west of the Park (Apsley roundabout). There are impressive gateways into the Park at both ends of the Broad Walk - Canada Gates to the South and Devonshire Gates to the north (although the latter are not in fact used for access).
- *Canada Gate (1908)* – These finely decorative gates face the Queen Victoria Memorial. The area behind them is used as a location for temporary media facilities for events and occasions of national importance.
  - *Devonshire Gate (c. 1735)* – These fine gates have formed the northern limit of the Broad Walk at Piccadilly since 1921, and are not opened for access.
  - *Commonwealth Memorial Gates (c.2002)* mark the western end of Constitution Hill.



- *Railings* – All boundaries of The Green Park are fenced. There are few internal fences within the Park.

## **Road and Path Network**

### ***St James's Park***

- 7.11 At St James's Park these comprise the wide spacious ceremonial avenues and parade grounds of the outer park contrasting with the curving sinuous paths of the inner park. The Park layout provides a very good network of paths and surfaces for the intensively used patterns of access. The Mall and its flanking walks provide the iconic ceremonial route between Trafalgar Square/Horse Guards to Buckingham Palace and indeed the route is used daily in this manner. The Mall and Marlborough Road are closed to traffic on Sundays and Public Holidays. The creation of five controlled pedestrian crossing points across The Mall has been beneficial. The traffic signals at Marlborough Road were changed in 2008 to enable cyclists and pedestrians to cross safely at the Marlborough Gate Junction. Improvements to cycling paths and access behind Canada gate for both pedestrians and cyclists has resulted in improved access and reduced conflict. A cycle lane has also been introduced under Admiralty Arch.

### ***The Green Park***

- 7.12 The numerous paths, which cross The Green Park, provide an essential pedestrian link between Green Park underground station and the major tourist targets of Buckingham Palace and St James's Park. They have evolved mainly as straight lines between the access points with desire lines emerging and incrementally 'hardened up' to form part of the path structure. The primary visitor circulation is between these two nodes and the Park should be robust in these areas, maintaining paths of an appropriate width and sympathetic surface. The wide tree-lined Broad Walk, with its straight parallel paths, was designed as part of the geometry and layout of the Queen Victoria Memorial.
- 7.13 Constitution Hill provides a clear, defined and sometimes ceremonial route linking St James's Park with Hyde Park Corner; a shared cycle and pedestrian path runs alongside. Constitution Hill is closed to traffic on Sundays and public holidays).

## **Park Furniture and Signage**

### ***St James's Park***

- 7.14 Lighting within St James's Park provides a special and dramatic night-time quality and experience. The introduction of feature flood lighting into the Park and along The Mall has had an excellent effect. There are 131 lamp standards of 13 basic types throughout the Park; the main lamp standards installed on The Mall 1912-1913. The lintels in the gas lamps along the path through the Park from The Mall, across the bridge to Birdcage Walk have been increased for safety to give a slightly brighter light along this main access route. In addition the lighting on the bridge has been improved and new lighting has been installed from The Mall to Inn the Park restaurant.

The new electrified lamp standards were cast from original gas lamps from Marlborough Gate path to match in style.

- 7.15 Other furniture in the Park includes litter bins, benches and signage. Most of the litter bins in the Park have traditionally been transparent wire baskets originally introduced for security reasons. However more contemporary timber slatted bins have been introduced from 2007 in a controlled programme at key locations. Benches in the Park are mainly located alongside paths in the inner park with concentrations around the lakeside. These are largely of an all timber style. The Royal Parks signage boards, of corporate style, appear at the main entrances to the Park with additional interpretation signs identifying the wildfowl on the northern shore of the lake where visitors congregate. Several interpretation panels have been installed recently such as the Swire Fountain and Jubilee Walkway at Horse Guards Road with additional purpose 2009.
- 7.16 Deckchairs are available for hire seasonally, contributing to the summer character of the Park.
- 7.17 Cycle parking for staff, contractors and visitors at the Storeyard has been installed and possible sites for public cycle racks have been identified elsewhere in the Parks.

### ***The Green Park***

- 7.18 Lighting in The Green Park is more limited. Pedestrians are encouraged to keep to the Park perimeter at night and to use the well lit Queen's Walk. Floodlighting has been used to up-light several of the mature plane trees alongside the Piccadilly boundary to enhance the visual quality of the Park at night when viewed from outside. There are 78 gas lamp standards of 4 basic types which bring an air of nostalgia, contributing positively to character of the Park. The lintels in the gas lamps along Queen's Walk were increased in spring 2006 for safety to give a slightly brighter light along this route.
- 7.19 The distribution of litter bins, benches and signage is similar to St James's Park but at reduced density. Timber slatted bins also appear in the Park and the benches are mainly of a cast iron-framed/timber slatted style (including the scroll ended O'Brien Thomas, of the style dating from the 1850s) which suits the character of the Park. Deckchairs are also a popular seasonal addition to The Green Park. Two additional dog bins were added in 2008 and interpretational signage is proposed for installation in 2009.

Figure 7.1 Built features and statuary



■ Built features / statuary



## 8.0 PUBLIC USE

---

- 8.1 This chapter examines the use of St James's Park and The Green Park. It considers the volume and profile of park visitors, the range of activities, events or ceremonies that attract users to the Park and the level of satisfaction with the visitor experience. The information has been extracted from the most recently published visitor surveys available at the time the management plan was being prepared (*Visitor Surveys in the Royal Parks*, Synovate, 2008)

### PUBLIC ACCESS

- 8.2 Public access to St James's Park and The Green Park was established in the late 1820's. The Parks are open nominally 24 hours a day (official opening times are between 5am and midnight) though closed to vehicular traffic on Sundays and public holidays.
- 8.3 The Parks are well served by bus and underground stations with Westminster, Charing Cross, Victoria, St James's Park, Green Park, Hyde Park Corner, Embankment underground stations in close proximity. Parking is available for coaches during guard change, permitted staff and on special occasions on the North Horse Ride Car Park (along The Mall) and occasionally along Constitution Hill for special occasion such as the Queen's garden parties.
- 8.4 The majority of visitors arrive by underground or on foot (between 70 and 80% indicated by the visitor survey). High volumes of cyclists use the roads and cycle routes provided to travel through the Park rather than to the Parks.
- 8.5 Information boards and orientation maps are provided at key locations in the Parks.

### Management issues: Public Access

- Public access and orientation could be improved by reviewing the finger post and map locations. (PUB 1).
- Cycle routes could be improved with better signage and changes to the road infrastructure in key location such as Spur Road around the Queen Victoria Memorial, at Hyde Park Corner and the crossing at the end of Constitution Hill. (PUB 3).

### VISITOR PROFILE

- 8.6 The most recent estimate of the total numbers of visits made to St James's Park and The Green Park made in 2006 was 6.2 million with an estimated 6.9 million visitors attending the Trooping the Colour at Buckingham Palace (2006).

- 8.7 Origin of Visitors two-fifths of visitors to the Park live overseas, this is the same profile as in 2004. Over a third (35%) of visitors to St James's Park in 2006 live in London and a further tenth (12%) live in the South East of England. Just under a half (45%) of visitors to Green Park in 2006 live outside the UK, a similar position to that recorded in 2004. Reflecting the ethnic origin results, these visitors come from a range of countries, although Western Europe and Northern America are the most common. Within the UK, visitors prove be fairly local with a third living in London, and the rest mainly coming from the South East.
- 8.8 The survey indicates that there is a high proportion of first time visitors (45% The Green Park and 35% St James's Park). Although around a half of visitors to the Park in 2006 are coming from 'home or hotel', only about half this number will be going back home or to their hotel after their visit. Instead most are citing a form of 'leisure activity', including such activities as shopping, visiting local museums/attraction, visiting friends or going to a restaurant; though 5% in St James's Park and 14% in The Green Park were going to or from work.

### **Management issues: Visitor Profile**

- Users are local, London-wide, national and overseas but with a high proportion of visitors from outside the UK it is particularly important that the signage is clear for non-English speaking visitors and those visiting for the first time. (PUB 1).
- Peace and quiet, fresh air most important activities, and sightseeing also very significant. The Parks are also not only a destination in their own right but as part of a day out which will include other activities. (PUB 1).
- Use by significant neighbours dictates some of the physical infrastructure of the Parks (mainly for security reasons). (PUB 3).
- The Parks proximity to a large number of offices means that it is used by pedestrians travelling to and from work as well as lunchtimes or relaxing after work. (PUB 3 & 4).

### **EVENTS**

- 8.9 The Parks host events and ceremonies of National and International importance which significantly influences the management of the Parks in terms of security, aesthetics and crowd control issues. Much of the street furniture needs to be removable to allow movements of people, coaches, horses etc. particularly for state ceremonial parades. For a similar reason road markings are kept to a minimum.
- 8.10 Most of the events held in the Park are free and available for local people as well as national and international visitors. A number of events on Horse Guards Parade ground including Beating the Retreat are ticketed or by special invitation. Most of these events are related to Royal or military

ceremonies but recently the Tour de France visited the park and the 2012 Olympics (and associated cultural events) being planned.

- 8.11 The Green Park is used for Gun Salutes by the army usually in spring and autumn.
- 8.12 A free programme of Guided Walks is provided throughout the year.
- 8.13 Bandstand hosts musical events throughout most summers each year.
- 8.14 Toilet Operation Safety Group Committees bound for all large events to ensure the safe planning and monitoring of all events.





## Management issues: Events

- Large scale events, state occasions and ceremonies are important management issues, these events are participated in by a wide audience and a source of substantial income potential. (PUB 8).
- To accommodate ceremonies and large scale event the Park furniture and infrastructure has to be designed and located to allow access to necessary vehicles, to keep routes free from obstruction and meet security requirements (PUB2 & 8)
- Capacity/recovery could be greatly enhanced by proper investment in improve ground conditions and events management. (PUB 8; NAT 2).
- Security and crowd control is considered very important as some of the Parks fall within the Government Security Zone. (PUB 2; NAT 1).
- With the redevelopment of Trafalgar Square as part of the World Squares projects the pressure on St James's Park for large scale events has reduced though managing crowds from events in Trafalgar Square has to be co-ordinated. (PUB 2).
- Stakeholder/neighbouring events such as art events run by ICA are also accommodated in the Parks. (CON 1; PUB 8).

## VISITOR AMENITIES

- 8.15 The current refreshment Kiosks were introduced into the Park in 2004 and are located: by the children's play area, Marlborough Gate, Artillery Memorial, Horseshoe bend (St James's Park); and Ritz Corner and Canada Gate (The Green Park). They are designed to be removed and relocated as necessary particularly for security risks. They undergo security inspections regularly and in sensitive location such as Canada Gate more checks are made before ceremonial activities and rehearsals. This allows the kiosks to remain in place over night. All of the kiosks are plumbed in with water and electricity. They have proved to be very popular and are successful revenue generators. To reduce the number of vehicle deliveries within the Park storage has been provided by Marlborough Gate for consumable items. There has generally been a resistance to introduce any more kiosks within the Park as it is recognised that the other locations would not be suitable due to their effect on the character of the Park and also they would not be commercially viable.
- 8.16 Refreshment facilities are provided in the form of the 'Inn the Park' restaurant. Open daily (except Christmas Day) from 8am. Closing times vary according to Season.
- 8.17 Toilet facilities are of reasonable capacity and reasonable condition maintained by the cleansing contractor and located by Marlborough Gate and adjacent to the Park Offices. They are to open from 8am to dusk (those at Inn the Park are available during restaurant open times. The City of Westminster provides toilets at Ritz Corner which are associated with

Green Park Underground Station. There is an access into the north side of the Park which is open from 7.30am to 11pm. All toilets are attendant operated for most of the day.

8.18 The Children’s Play Area situated at the narrow end of the Park near Horseshoe bend was moved to accommodate the sinuous lines of the original Nash path structure. The area has been designed in a very naturalistic fashion with an imaginative use of boulders, timber and sand. The play area nestles between the path and the edge of the lake blending into the landscape under the tree canopies. It is very well used and popular with families on days out in the Park. Children only toilets are provided during opening hours and the playground is attended. A mobile kiosk is situated close by.

8.19 The concessionaires in St James’s Park and The Green Park are:

Concessionaire Name	Activity	Terms of Lease
EC Soft Ice	Catering/Kiosks	10 years from 1 October 2004
Gruppo (Peyton & Byrne)	Catering/Inn the Park	10 years from April 2004 with consideration for extension for 5 years in 7 <sup>th</sup> year.

#### Management issues: Visitor amenities

- Toilet facilities are open from 8am to dusk. As the area is a main commuter, pedestrian route many people would benefit from the toilets opening earlier and closing later. The Inn the Park toilets are used heavily creating capacity issues at peak times. Toilet facilities using a coin operated system should be considered alongside longer opening hours. Concerns of anti-social activity and use by rough sleepers needs to be addressed. (PUB 4).
- Children’s toilets are provided at the Playground though there is no adult provision. Toilets could be made available for people not using the play area. The playground kiosk is also the least commercially successful which may be due to its location and setting. (PUB 4).
- The only DDA compliant toilet facilities are found at Inn the Park, the Park Offices and Marlborough Gate. (PUB 4).
- Inn the Park replaced the Cake House Café with a modern timber clad structure and turf roof. The facility provides toilets as well as excellent quality catering. The building integrates additional seating around the structure and terraced areas at ground floor and first floor level. Many visitors travel by bicycle and there is a need to deter visitors from using the railings to secure their bicycles to. Cycle parking could be provided in this location though it has formally been raised as a security issue by the Police. (PUB 2 & 4).

- Play area is very popular and well used due to its secure setting and imaginative use of natural materials and design. It has CCTV and an attendant during opening hours. (PUB 4)
- Mobile kiosks have reached their natural limit in numbers and suitable locations. The centralised storage area needs to be considered particularly if the demand for storage increases. The area including the kiosk and the toilets could be redesigned to meet visitor needs and improve the appearance of this area. (PUB 5).

## **INFORMAL AND SEMI-INFORMAL ACTIVITIES**

- 8.20 Picnics and informal gatherings are encouraged within the Parks. Formal corporate events are not allowed and are discouraged.
- 8.21 Activities such as Yoga, Tai Chi and Qi Gong meditation are permitted to take place in the Park along with other uses which do not damage the fabric of the Park.
- 8.22 Dog walking is permitted (though restricted to dogs on the lead by the lake in St James's Park to protect the water fowl). Dog bins are provided on the north side of The Green Park only for security reasons. Signage informing the public of the regulations and restrictions relating to dogs are located in the Park. A Dog Walking advisory leaflet was produced and distributed in 2008. Generally the Park staff are aware of the regulations and inform visitors as necessary. Dog faeces is not a particular problem within the Parks as it is not a major dog walking area. Professional dog walkers do not use the Park and the situation is being constantly monitored.
- 8.23 Cycling has been on the increase in the past few years and the cycle route along Constitution Hill was introduced to link in with the cycle routes that now come across from the Wellington Arch from Hyde Park. Several of the Long Distance Cycle Network (LCN) routes run through the Park and are well used by cyclists, particularly those commuting to work or cycle couriers. The Parks generally support the use of the cycle routes for those using them for leisure or learning purposes; unfortunately there are many cyclist who display behaviour that is detrimental to other visitor's experience or cause hazards. Significant improvements have been introduced to benefit cyclists and for the safety of pedestrians including removal of clutter, moving mapboards, improved signage and increase circulation areas.

### **Management issues: Informal and semi-informal activities**

- Football is often played on Southern end of The Green Park but is discouraged by Park staff due to the condition of the grass. The grass cutting regime may alter this use of the area. (PUB 6).
- Picnicking has become more popular particularly with groups congregating under trees. This can cause compaction issues at tree bases. (NAT 1 & 2).

- Cycling is permitted for children under the age of 10 years old, however, parents accompanying their children are not permitted to cycle except on designated paths. Cyclist behaviour is variable in the Park with many cyclists using footpaths to cut across the Park. It is hoped the police will eventually have the power to issue fix penalty notices which may reduce this. (PUB 4).

## **VISITOR SATISFACTION**

- 8.24 The 2006 Visitor survey indicated that overall most visitors believe that St James's Park and The Green Park offer a high quality experience. The ratings for overall quality were 96% excellent or good for St James's Park and The Green Park. Visitors also indicated that they feel safe in the Parks (98% St James's Park and 96% The Green Park responded that they felt very safe or quite safe).
- 8.25 Both Parks were rated highly on access, getting around, tidiness & cleanliness, upkeep and peace and quiet. Aspects that were not rated highly were the lack of sports facilities and car parking. Other areas that could be considered for improvement were the catering, children's facilities, signage, notice boards, maps and visibility of staff.

### **Management issues: Visitor Satisfaction**

- The Parks need to ensure they maintain a high quality visitor experience by ensuring good management and maintenance practices. Improving the experience could be achieved by making information and interpretation more accessible to visitors and considering improvements to catering and toilets. (PUB 1).
- Due to the limited space within the Parks and the intensity of use there is very little scope for introducing formal sporting facilities. Recreational activities such running, jogging, cycling (along routes and road) and walking are popular in the Parks. Area for more formal sporting activities are provided close by in Hyde Park. (PUB 6).
- The central London location means that desire for car parking is high. The Parks are relatively small and thus there is limited space for car parking. As the majority of St James's Park is within the Government Security Zone and there are frequent military and ceremonial events the opportunity for publicly accessible parking is restricted. (PUB 2).

## 9.0 LANDSCAPE CHARACTER

---

- 9.1 St James's Park, today, reflects the cumulative layers of its history with that of the Nash period being still most pronounced although now adapted and responding to enormous pressures of current use throughout the Park. By contrast, the character of The Green Park, today, substantially disguises its cumulative layers of history. This section provides a description of the content and character subdivisions of both Parks and highlights future management opportunities.

### VIEWS: ST JAMES'S PARK

- 9.2 The Park provides opportunity for some important and exceptional views both within and outwards beyond the Park's geographical limits (see figures 9.1 and 9.2). Two of these are recognised in the London View Protection Framework (Draft April 2005).
1. The view from the bridge to Horse Guards along the eastern axis of the lake [Townscape view (4) in London View Protection Framework].
  2. The view of Buckingham Palace from The Mall [linear view (a) in London View Protection Framework].

Additionally the following are recognised as strategically important views from the Park. The Royal Parks will seek to protect and manage these views internally within the Park's limits (with careful consideration of tree positions in particular), also seeking to influence others for protection of the views and their skyspace where these extend out beyond the Park boundaries:

3. Westward from the bridge to the east elevation of Buckingham Palace.
  4. From Marlborough Green to the south west across the lake to Storey's Gate, Westminster Hall and Westminster Abbey.
  5. From the east end of the lake, south of Duck Island Cottage for the view westwards along the long axis of the lake to Buckingham Palace.
  6. From the rockery bed path northwards to the Duke of York's column.
  7. From the Harbour Wall eastwards across the full length of the Park to the Foreign Office, Big Ben and Victoria Tower (Palace of Westminster).
  8. The view of Admiralty Arch from The Mall.
  9. From the path south of the bridge towards Buckingham Palace and Queen Victoria Memorial.
- 9.3 In reverse there are also views from outside the Park looking in as for example from Queen Anne's Gate or from Cockpit steps (as identified in the Birdcage Walk Conservation Area) into the Park across Birdcage Walk.



## Figure 9.1 St James's Park Views



## CHARACTER AREAS: ST JAMES'S PARK

- 9.4 **Shape:** Roughly triangular, forming the most easterly of the four central London Royal Parks which extend westwards from Whitehall to Kensington Palace. St James's Park provides the physical and visual link between Buckingham Palace and Whitehall. It is an important pedestrian link between major tourist targets of Trafalgar Square, Buckingham Palace, Houses of Parliament, Westminster Abbey, Horse Guards Parade and Whitehall.
- 9.5 **Current Character:** A formal 'ceremonial' outer park enclosing the delightful, informal nineteenth century Nash landscape. The inner park is characterised by a free flowing and relaxed identity with a carefully contrived and picturesque Englishness of undulating topography and grassy banks, floriferous shrubberies, sinuous paths, curving lake with its wildfowl collection and framed views. This is contained by and contrasted with the enclosing framework of avenues and roadways which provide the setting for national and ceremonial events. The Park has inevitably become "busier" with fixtures and fittings than originally intended by Nash, and is somewhat cramped and cluttered by latter day additions and furniture. Nevertheless, it fulfils its purpose superbly in providing a remarkable and quality landscape at the heart of tourist London and ceremonial Britain, and copes well with the huge numbers who visit every day of every year.
- 9.6 The Park is subdivided into recognisably different character areas (see figure 9.3) with a clear distinction between the outer framework of roadways and associated ceremonial grounds in contrast to the inner park – essentially that of John Nash's making, with local adaptations, and being mainly inward-looking with its focus on the lake.
- 9.7 The outer areas include the oldest (Horse Guards, The Mall, Birdcage Walk) and the youngest (Queen Victoria Memorial); while the inner park retains an overall unity closely related to Nash's influence. The recognised character areas are:
- I. **Queen Victoria Memorial** (often referred to as "QVM"), laid out in 1908 to Sir Aston Webb's design which annexed a portion of the inner park and caused foreshortening of the western extent of the lake. This is now a world famous set piece for ceremonial and national events. It includes the formal gardens framed by the Dominion Gates and roadway junctions which also serve essential and ceremonial movements and routes. The essence here is formality with quality in the lawns and beds, in their now long established and traditional form, and co-ordinated hard surfaces which must necessarily cope with the intensive and variable patterns of vehicular, pedestrian and ceremonial movement while retaining the essential setting of palace buildings and adjacent monuments.
- Clear open skyspace around the setting and silhouettes of both the Palace and the Queen Victoria Memorial is of strategic importance as recognised in the London View Protection Framework.

2. **The Mall** forming the northern framework of the Park is also one of the oldest features, related to the development of St James's Palace and relationship to Whitehall on the slightly raised ground above what had in pre-Tudor days, been in effect water meadow. The Mall became more formalised in the Restoration both in layout and in use (with the parallel Court of "Pell-Mell", as shown in Kip's illustration, published in 1746). The siting of the Duke of Buckingham's House, its acquisition by the Crown and subsequent redevelopment and expansion gave focality to the avenue and road, eventually assuming greater importance as a ceremonial route. The Mall survived Nash's improvements both to Carlton House Terrace and during the redevelopment of the inner Park in 1826-29. Indeed Nash retained the old trees in the, then, 5 line avenue, interplanting to reinforce the pattern. The formality of The Mall was reinforced by the initial siting of the Marble Arch (1835, removed 1850) and later developments of Admiralty Arch and Queen Victoria Memorial. The twentieth century made adaptation to vehicular traffic, renewal of the tree lines and addition of several monuments on the flanks.
3. **Birdcage Walk** forms the equivalent though less formal framework of roadway along the southern side of the Park. Here the property boundary follows the building line at the rear of Queen Anne's Gate – those gardens lying within the Park as freebord. As with The Mall, the road is tree lined with additional rows repeated within the inner park.
4. **Horse Guards Road** and the Parade Ground form the fourth side of the framework, also in some respects standing for the origins of the Park on the landward side of the former Palace of Whitehall. Historically, the formal canal of the Restoration period extended further east than the present lake and was partly framed by the patte d'oie of avenues radiating out from the earlier parade ground. The character is essentially that of the parade ground with the backdrop of important buildings, including the Citadel, the Horse Guards and the Foreign Office, and with a number of monuments around the perimeter.
5. **The lake** acts as the spine to the inner park, being John Nash's achievement in reshaping the former canal into a classically English form, with reasonable economy. In its middle sections (around the bridge) the lake retains the proportions and dimensions of the earlier canal, but Nash widened both ends of the original water body and disposed of excavations in forming islands which further soften the form and outline. The bridge (1957) replaced an earlier one in the same location, originally constructed in 1847; while the western end of the lake was foreshortened as a result of the QVM works and construction of the "harbour wall".
6. **Inner Park North:** The ground rises gently up from the former water meadow to the gravel terrace on which The Mall is constructed, but is also gently undulating as a result of Nash's earthworks and disposals. It has good populations of trees and several shrubbery beds – again of Nash origins – with the enclosure of the Storeyard at the eastern end.

The distribution of trees, the gently sweeping alignment of original Nash paths, undulations and open prospects down to and across the lake – collectively convey the spirit of Nash’s parkland, locally altered by addition of later (often straight) paths, Park furniture and facilities, including the Inn the Park. Overall the intention should be to retain, reinforce and locally restore the integrity of Nash’s elements and footprint in preference to later increments.

- 7. Inner Park South:** Similar in form and content to the north side of the lake but without the raised gravel terrace and with additional elements of the playground and the mound-enclosed leaf pen. Historically the south eastern area was part of the Charles II’s decoy and aviary. Nash used this area of the low lying land and channels to extend the lake and to form “Pelican Bay” and the island. The area has a relatively substantial extent of tree canopy and grassy spaces, though fluid and continuous spaces, mainly inward looking towards the lake.

## **VIEWS: THE GREEN PARK**

- 9.8** There are no specifically protected views identified in the London View Protection Framework directly affecting the Park, although several are recognised by the Royal Parks (see figure 9.4) including:
  1. The view north west up Constitution Hill to the Wellington Arch.
  2. The long view southwards down the Broad Walk axis to the Canada Gate and QVM, and the reverse view from Canada Gate up to Devonshire Gates.
  3. The wide panorama from the raised open ground at the north-east corner of the Park (adjacent to The Ritz Gate). [Note: this vantage offers a wide panorama of open skyspace to the south with only a single tower block in Victoria appearing above the tree canopy].
  4. A long slightly oblique and narrowly defined view from paths on the west side of the Broad Walk westwards through to Wellington Arch.
  5. A similar discrete view from the Constance Fund Fountain to Wellington Arch.
  6. A series of close views from Queen’s Walk and adjacent ground to the varied architecture facing Queen’s Walk, including Spencer House.

## Figure 9.2 Character Areas St James's Park

### Figure 9.3 The Green Park Views





## CHARACTER AREAS: THE GREEN PARK

- 9.9 **Shape:** Triangular, since the severance of the Apsley roundabout, but still forming key pedestrian links between Hyde Park Corner and The Green Park underground stations and the tourist targets of Buckingham Palace/St James's Park. Hyde Park lies to the west.
- 9.10 **Current Character:** A largely uncluttered and informal landscape of grass and trees, articulated by a gently undulating landform. It is the quiet refuge between the popular Hyde Park, bustling Piccadilly, and the ceremonies and pageantry of St James's. The Park is notable for the relative absence of structures and buildings.
- 9.11 The following character areas are identified (see figure 9.5):
1. **Constitution Hill:** effectively laid out about 1767, its significance consolidated by the relocation of the Wellington Arch in 1883 from its previous position facing Decimus Burton's Ionic Screen to sit on the axis of Constitution Hill; also affected and formalised at its south-eastern end by the QVM layout of 1908. This is another ceremonial route, with parallel footways, horse ride and informal (well-used) jogging path (desire line). The lines of trees are important and careful planning is needed to assure appropriate renewal and succession.
  2. **The Broad Walk:** A key component generated by the design and layout of QVM in 1908, this broad grass ride, framed by 4 rows of plane trees, forms a central North/South spine through the Park, with the (closed) Devonshire gates at the Piccadilly boundary and terminated by the (usually closed) Canada Gates at QVM. Care will be needed to manage the canopies of trees on the inner rows and to retain the essential uncluttered simplicity of the setting. The southern section has also suffered greatly through the closure of Canada Gates (on health and safety grounds) resulting in the spread of alternative and well worn desire lines. This has necessitated the revision to layout of paths at this location during 2008.
  3. **The East Park:** Mainly open ground falling down from the plateau area of the former basin (reservoir) near Ritz Corner, past the 'Bullring' and the former bandstand site (now marked by a circle of plane trees) to the lower more wooded ground behind the Dominion Gates. This area is much enjoyed for sitting out in sunny weather, and heavily trafficked by pedestrians in the route from Green Park underground station to Buckingham Palace and St James's Park. The Queens Walk forms its eastern side with a variety of buildings backing onto the Park. The key issues here are to retain and enhance the quality of grassland while ensuring appropriate continuity and succession of tree cover. The more shaded and poorly drained areas in the lower ground, behind Canada Gates, are prone to suffer and deserve attention.
  4. **Inner Park:** This is the quieter more informal area and larger extent of the Park to the west of the Broad Walk, containing the now dry valley form of the Tyburn Brook. Tree planting is, in the main, in informal and

harmonious groupings, against which a now dilapidated lime avenue along the main east-west path look peculiar. It should be allowed to fade without replacement. This area formerly contained the Ranger's Lodge, an Ice House, a Deer House, a pond in the Tyburn Valley, and an earlier (Smirke) fountain of 1860. The more open area in the southern part of the Park is used in gun salutes.

- 5. Apsley Roundabout:** This area was severed from the Park in 1960 and is now managed by different agencies such as Westminster City Council, Transport for London and English Heritage. It contains several important monuments, not least of which is the re-sited (1883) Constitution Arch and the most recent Australian and New Zealand Memorials.

## Figure 9.4 Character Areas The Green Park



# PART 3: LANDSCAPE STRATEGY

## 10.0 SIGNIFICANCE

---

### STATEMENTS OF SIGNIFICANCE

- 10.1 The statements of significance for each Park explain what matters and why it matters. They set out why the Parks are unique and what is important or 'significant' about them. They form the basis for developing policies, management guidelines and identifying projects to ensure that positive aspects of St James's Park and The Green Park are conserved in perpetuity whilst weak or declining aspects or features can be enhanced in the most appropriate manner. The statements of significance encompass the principal values of each Park including their cultural, historic, aesthetic, recreational, ecological, social and economic values.
- 10.2 The qualities, attributes and main values of the Parks are then presented in table 10.1 below. The main benefits of each attribute are indicated and a comparative grading is given of their relative importance (international to local).
- 10.3 The public consultation process will be valuable in providing a wide range of views on the significance of the two Parks, and will be used to review and update this section of the Plan.

#### The Significance of St James's Park

##### St James's Park is:

- Premium location.
- Iconic context re British ceremonial life.
- An ancient Park, directly associated with 3 Royal Palaces and (later) heart of Government.
- Outer Park – ceremonial avenues/promenades.
- The Park expressly designed, by Nash, for public access.
- Nash's achievement of prototype Englishness – informal design set in a framework of ceremonial access.
- The setting for many important buildings.
- A robust open space which delivers enjoyment to many thousands of daily visitors.
- Area of respite in the heart of the metropolis

#### The Significance of The Green Park

##### The Green Park is

- A survival as relatively uncluttered green oasis within the city.

# SUMMARY OF KEY SIGNIFICANCE

Table 10.1 Key Significance

Qualities and Attributes and main values	International	National	Regional	Local	Supporting notes
<b>Historic Landscape Values</b>					
<b>St James's Park</b> is an important historic landscape encompassing the formal restoration layout echoing contemporary seventeenth century French design and a picturesque inner landscape created by Nash in the early nineteenth century; Nash's inner park at St James's is accepted world-wide as a model English landscape which reflects a relaxed but ordered approach to public space. There is a well-documented history which demonstrates the relationship between the medieval and modern concepts of a 'Park'.	✓	✓	✓	✓	English Heritage Grade I Registered Landscape
<b>The Green Park</b> has a character which has evolved not so much by intentional design but more by resisting attempts to formalise its layout. The Park still retains the memory of its origins as a rural-pastoral landscape with its undulating landform, gentle valley of the River Tyburn and balance of trees and grassland	✓	✓	✓	✓	English Heritage Grade II Registered Landscape
Archaeological features/potential in both Parks			✓	✓	RCHME Survey
<b>Historic Building Values</b>					
<b>St James's Park</b> was originally enclosed by Henry VIII in 1531 as private Park associated with St James's Palace. The Park is in a unique position with strong links with surrounding buildings of Buckingham Palace, Whitehall and Westminster.	✓				
Important built features including memorials, gates, statuary.		✓			Listed building status
<b>Biodiversity Values</b>					
<b>Both Parks</b> feature a range of important habitats of particular value are the mature trees. <b>The Green Park</b> has an abundance of good trees, many of them now in the best years of their maturity; the finest of them predominantly Plane. <b>St James's Park</b> also features mature trees plus open water.			✓		
<b>Both Parks</b> provide an extensive area of green, open land in the heart of central London connecting with the adjacent Hyde Park.	(✓)	✓		✓	MOL
<b>Recreational, Social and Educational Values</b>					
Informal recreation resource and asset for tourists and local community	✓	✓	✓	✓	
<b>The Green Park's</b> trees and shade contrast with sunlit grass to the evident enjoyment of the Park's users		✓			
Popularity, attracting large numbers of people who visit <b>The Green Park</b> both on a regular and occasional basis		✓			
Remarkable popularity and resilience with more than visitors per year and providing the natural pedestrian "conduit" between the capital's major tourist targets;	(✓)	✓			



Qualities and Attributes and main values	International	National	Regional	Local	Supporting notes
<b>The Value of the Wider Setting</b>					
<p><b>St James's Park</b> is significant as a national monument in its own right and a world famous setting for some of the most visited historic sites of London including Buckingham Palace, Horse Guards Parade and Westminster providing a magnificent urban setting of palaces, park, historic architecture and ceremonial ways</p>	✓				
<p><b>St James's Park</b> is a remarkable survival of a landscape which is now perceived in almost the reverse way from that in which it was designed and constructed. (Aston Webb and the processional route of The Mall being the later constructions and Buckingham Palace benefiting from rather than causing the layout of the Park);</p>	✓				
<p><b>The Green Park</b> has a unique position, as a quiet, peaceful refuge between the principal scenes of ceremony and pageantry in Britain and adjacent to one of the busiest and most celebrated streets in London</p>		✓			
<p><b>The Green Park</b> has a distinct triangular physical layout, embraced by buildings on its north east and north west sides, with some lively contours in its western half;</p>					
<b>Aesthetic and Spiritual Values</b>					
<p>Despite the many additions and changes in detail, <b>St James's Park</b> or the inner park at least, still echoes very strongly the sense of place created by John Nash with its curving lake, picturesque shrubberies, and sinuous paths.</p>	✓				
<p><b>The Green Park</b> is a central London Royal Park with special qualities of peacefulness and providing a quiet, informal refuge. Simplicity, contrasting with the adjoining St James's and Hyde Parks, is the core of <b>The Green Park's</b> character.</p>	✓				
<p>Despite the addition of various structures and facilities throughout the ages, these have mainly been ephemeral and <b>The Green Park</b> retains an essentially uncluttered, almost timeless character</p>		✓			
<b>Association with Historic and/or Cultural Events or People</b>					
<p><b>St James's Park</b> provides the context for important ceremonial events and as such forms a landscape which is at the historic heart of the nation, embedded in the collective national psyche and forming part of the British identity.</p>	✓				
<b>Economic Value</b>					
<p>The Parks have a positive impact on the local and regional economy, but balanced by high costs of maintenance and conservation.</p>		✓			



## 11.0 KEY MANAGEMENT ISSUES

---

- 11.1 This section summarises and brings together the main management issues affecting each of the two Parks. These key issues will need to be confirmed and added to through the stakeholder consultation exercise to be carried out prior to adoption of this plan.

### ST JAMES'S PARK HEADLINE ISSUES

#### General Park Management

- Need to sensitively manage this internationally significant historic park and important wildlife habitat whilst responding to changing conditions, contemporary needs/demands and uses of the Park.
- The Mall, along with Horse Guards, Horse Guards Road and Birdcage Walk is an important ceremonial route and it is important to preserve this and its relationship with Buckingham Palace – surfacing **improvements on horse Guards Road.**
- The Park is located within the area known as the Government Security Zone (GSZ). Although security has always been an issue the GSZ formalises the management procedures required of The Royal Parks. This impacts on the day-to-day operations within the Park i.e. vehicle access and movements, scheduling of contract works and events in the Park, emergency procedures, need for physical alterations to the Park, putting additional pressure on the Park Manager's time and budgets.
- Increasing visitor pressure and pressure from events. In particular the increasing number of large-scale events taking place demand much of the Park Manager's time and put additional pressure on the Park staff.
- Park management and maintenance has to respond to/ adapt to changes made in the Park e.g. new planting styles require different maintenance regimes (this needs to be considered before the changes are made).
- Park management has to respond to changes made to the wider area e.g. traffic flow along The Mall affected by changes to Admiralty Arch traffic light phasing **and introduction of a shared pedestrian and cycle crossing at Marlborough Road.**

#### Natural Fabric

- Need for ongoing process of renewal of mature plantings and need to adapt, restore or replace some plantings to maintain continuity in style and approach throughout the Park with particular reference to Nash.
- The combined effect of high visitor numbers, heavy shading from mature tree canopies and feeding of the birds has a detrimental affect on the condition of some grass areas. On the lake edge the condition of the grass is further threatened by waterfowl grazing, particularly geese, coots and

moorhens. – Parks implementing advisory signs regarding bird feeding to protect the welfare of the birds and to maintain water quality.

- There are limited budgets for proactive tree management in the Park therefore the tree strategy implementation is over a long timescale and as budgets allow. Priorities include maintaining strategic views, improving light levels to the most heavily shaded grass areas, ensuring tree removals and potential position and content of replacement or additional planting is carefully considered. – Royal Parks Arboricultural Officer has conducted a zone 1 tree Survey to assess overall health and condition of trees within the Park. This information will be updated and added to regularly.

### **Buildings and hard landscape fabric**

- Dominated by traffic (on three sides) which severs the Park (except on Sundays) and reduces its capacity for people and intrudes on the integrity and quality of the landscape – scope to increase timetabled closure of the Park;
- The future access to and maintenance of ‘Inn the Park’ roof needs to be resolved.
- Ongoing need to repair and replace Park furniture, lighting, signage and railings but need overall strategy defining appropriate locations and styles to be used.
- Limited storage and staff facilities.
- Funding is needed to enable fountains to be made operational.
- The Mall surfacing - wind blown fine gravel is an ongoing maintenance issue and the dust can be a nuisance. A solution needs to be found which would fix this surface down.
- Due to excessive trampling near path junctions once removed railings may need to be reintroduced to steer foot-traffic back to the paths.

### **Public use**

- High daily footfall of visitors
- Jogging is becoming increasingly popular and the resulting desire lines widening and becoming more obvious.
- The precedent is being set for increasingly large-scale events taking place in the Park. Careful planning and management is needed to limit impacts on the fabric of the Park and so not detrimental to the conservation area status and historic significance and sensitivity of the Park. (Income from such events is limited for The Royal Parks and there is no long-term reinvestment in the fabric of the Park.)
- Limited interpretation available for visitors about the historic landscape.

- Limited educational resources informing visitors about the impacts of feeding the birds.
- Cycling is only permitted in the Park on designated cycle routes or the roads due to the great numbers of pedestrian visitors and the conflicts which would occur between these two user groups.
- The horseride is a parking facility for permitted cars, coaches and is a cycle route through St James's Park.

## **Landscape character**

- Need for protection of skylines and key views;
- Some dilution and drift from the original design with introduction of clutter and need for presentational improvements – paths, shrubberies, furniture, signage;
- Essentially retain the status quo of main layout, ingredients, character, qualities and uses.
- Need to conserve and enhance Nash style of planting.
- Straight paths have developed, with the loss of Nash curvilinear style.
- The addition of any further buildings or structures may detract from the Park's character.

## **THE GREEN PARK HEADLINE ISSUES**

### **General Park Management**

- The Park side of Canada Gate is used regularly as a media centre with detrimental effects on the grass and trees through compaction by vehicles. Due to the frequency of use there is limited time for reinstatement works to be effective.
- Security (see paragraph above under St James's Park).

### **Natural Fabric**

- Tree cover is too widespread in places threatening the delicate balance between open grassiness, space and the trees which define it and eliminating any transparency through the Park. This tendency will increase as plantings of recent years fill out. In some areas the canopy cover is too dense with an excess of shade affecting condition of grass. (Further opportunities to plan planting of groups of smaller species thorns or Malus e.g. to provide setting for fountains or screen less attractive buildings along Piccadilly.)
- Budget for tree works is prioritised to health and safety works, with limited availability of funds for cosmetic works or works to mediate light penetration issues. The Park tree strategy will guide tree management over a long timescale.

### **Buildings and hard landscape fabric**

- Traffic (noise and fumes) intrudes severely on the senses on two of the Park's three sides; the line of the Piccadilly hedge westwards towards the Memorial Gates has helped reduce this intrusion.
- The realignment of the paths in the mid-1990's led to the development of two major desire lines. This has occurred since the Canada Gate has been closed; the path layout between Ritz corner/Queens Walk towards the

Canada Gate no longer coordinates with the main access points. Thus the main path connecting Green Park station with Buckingham Palace was restored during 2008. There is one particularly underused diagonal path which could be removed.

- Ongoing need to repair and replace Park furniture, lighting, signage and railings but need overall strategy defining appropriate locations and styles to be used.
- Improvements to the infrastructure of Green Park underground station; step free access and new access into Green Park will commencement in 2009. This will include the relocation of the Constance Fountain and it's restoration to working order.

### **Public use**

- Conflicts between, pedestrians, cyclists on Constitution Hill, particularly adjacent to Canada Gates where pedestrians emerge from the Park to cross to Buckingham Palace has been addressed with moving park furniture, path restoration and increase circulation space. Safety issues are being managed by keeping Canada Gates closed (except Sundays) to encourage the large number of visitors to use the nearby pedestrian crossing across Constitution Hill. In addition improvements are being made to the surface layout and signage to clearly define cycle routes. (The number of pedestrian visitors means cycling would be a hazard if permitted throughout the Park.) Reviewing cycle use in the park needs to be continued and markings need to be refreshed on a regular basis.
- Jogging is becoming increasingly popular in the Park, the associated desire lines widening and visually unattractive.

### **Landscape character**

- A need for presentational improvements and upgrading in localised areas (such as Ritz corner/Walnut Circle, Piccadilly boundary and entrances). Those at Ritz Corner will be addressed through London Underground, Step Free Access Scheme.
- Poor visual and physical continuity with Hyde Park at Apsely Roundabout; recent closure of underpass has caused some improvement to surface (pedestrian) crossing on this link but further partnership working with City of Westminster is required to soften/integrate the Park edge in place of the wide paved junction.
- Inconsistency in style/character of the boundary treatments of the private properties adjacent to Queen's Walk. Although The Royal Parks have no jurisdiction over these fences communication with residents could be beneficial perhaps through consultation on this management plan. This situation has improved considerably since 10 years ago with better presentation from Queen's Walk but there are also some areas for potential improvement to consistent design code.





## 12.0 LANDSCAPE MANAGEMENT STRATEGY

---

### THE LONG TERM VISION FOR ST JAMES'S PARK

The future management of St James's Park must continue to respect the historic landscape and in particular the character and distinctiveness of its component parts. These accommodate the enormous numbers of visitors who visit the Park in conjunction with other tourist attractions and for the Park itself. Those parts include the formal 'ceremonial' seventeenth century layout for the outer park and the delightful, informal landscape of the inner park, laid out by Nash in the early nineteenth century. For the inner park the intent should be to retain and where possible to restore the authenticity of Nash's 1827 layout. The overall aim should be to conserve the free flowing and relaxed identity of the inner park with its picturesque landscape of undulating topography and grassy banks, floriferous shrubberies, sinuous paths, curving lake and framed views, all contained by the magnificent formal avenues.

In the future St James's Park should continue to provide the setting for national ceremonial life and provide a green haven of landscape in the heart of London for visitors. Future generations should still be able to experience the romantic Nash landscape with its lake, landform, shrubberies, tree groups and the important collections of wildfowl.

### GUIDING PRINCIPLES FOR CONSERVATION

- 12.1 The paragraphs below set out the overriding principles for conservation of the main environmental assets of St James's Park. These overarching principles guide all subsequent policies in the management plan.

#### 1. Character and historic landscape

In summary, the essential character and sense of place of St James's Park are created by the formal 'ceremonial' outer park enclosing the delightful and informal nineteenth century Nash landscape. The management aims are to conserve and enhance the special character of the two distinct elements of the Park, resisting further additions which dilute such character and ensuring that any future changes are sympathetic and in keeping.

#### 2. Views

Views within and outwards from St James's Park are critical to the character of the Park. These views and, where relevant, the associated skyspace will be managed and protected to respect the historic identity of the Park.

#### 3. Archaeology

The RCHME Archaeological Assessment of St James's Park (1994) states that there are no surface features that merit detailed survey. However hidden archaeological resources and potential are still likely to be of major

significance. The overall policy for archaeology is to conserve and protect the existing, features and hidden potential *in situ*.

#### **4. Biodiversity**

As a set, the four contiguous Royal Parks in central London represent a considerable biodiversity resource. The general policy is to seek to enhance the value of St James's Park for nature conservation through appropriate management, where this is commensurate with landscape objectives. In St James's Park particular opportunities are presented by the important collection of waterfowl. Consideration will be given to the role of the Park in meeting wider biodiversity objectives as part of the London Biodiversity Action Plan through the partnership with Westminster City Council on local Biodiversity Action Plans (BAPs).

#### **5. Park Management and Consultation**

The Royal Parks will endeavour to pursue management of St James's Park in an open and transparent manner, for and on behalf of its full spectrum of users and visitors. The Royal Parks will seek to undertake such consultation and to work constructively with the local community and communities of interest including the Local Authority, the Friends Groups, the Wildlife Group, neighbours and other 'visitor' attractions, organisations and key stakeholders.

#### **6. Quality**

The Royal Parks will maintain quality in park management (landscape maintenance, horticultural content, litter clearance and cleansing, water quality etc.) in St James's Park as befits this prestigious location, which is on show to the world. Good water quality, in particular, is critical to the experience and atmosphere of St James's Park. Management and resources should be focussed on the timely repair of wear and tear, (grass, paths etc.) to ensure that the Park is always presented to its best effect.

#### **7. Greenspace/Amenity**

St James's Park will continue to fulfil its role as Metropolitan Open Land i.e. a site of strategic importance as open space within London. It will continue to function, along with the contiguous Royal Parks of The Green Park, Hyde Park and Kensington Gardens, as a natural and tranquil greenspace in the heart of central London. St James's Park will provide opportunities for free public access for relaxation, quiet enjoyment of the natural surroundings, and informal recreation and act as a counterpoint to urban culture. The Park will make a positive contribution to the quality of life for the local community and visitors and enhance the quality of the urban environment.

#### **8. Sustainability**

The Royal Parks will strive for the highest standards of environmentally sustainable park management. This will include every effort to minimise energy consumption and emissions and to reduce waste through recycling practices, including composting. Application of chemicals will be minimised

in compliance with good horticultural practice and use of water resources will be judicious. Recent cleansing of the lake and recycling (oxygenating) of water is a good precedent. The importance of the Royal Parks in meeting wider sustainability objectives, for example in maintaining quality of urban life, will be considered in all aspects of park management, and further opportunities for connecting with the wider sustainability agenda will be considered.

## **9. Security**

The implication of the Park being within the Government Security Zone requires higher level of police activity, presence and inspection as well as continual review of the security status and risks.

## THE LONG TERM VISION FOR THE GREEN PARK

The future management of The Green Park must continue to respect the evolved landscape and character with its open sweeps of grassland and both formal and informal tree groupings. It is not considered appropriate to define any particular historical period as a target for restoration. The park should, essentially, be retained in its present evolved form with its established character of permanence and peaceful ambience. The essentially timeless character of The Green Park is one of its main strengths and should not be compromised by the addition of new large scale and permanent landscape features. Local small-scale enhancements (surface repairs, edges) are required to restore and enhance visual and physical continuity particularly towards the adjoining parks of St James's and Hyde Park.

## GUIDING PRINCIPLES FOR CONSERVATION

12.2 The overriding principles which should guide all future management of The Green Park landscape are set out below:

### 1. Character and historic landscape

The essential character and sense of place of The Green Park are created by the simple landscape composition of grass and trees articulated by a gently undulating landform. The management aims are to conserve and enhance the informal and 'timeless' ambience and atmosphere as a peaceful refuge in the heart of London. This should include provision for the renewal of the formal framework of avenues/trees planted in the mid-nineteenth and early twentieth centuries. Any future changes being sympathetic and in keeping with these objectives.

### 2. Views

Although not protected there are a number of views within and outwards from The Green Park which contribute to the character of the Park. These views will be managed and protected to respect the historic identity of the Park.

### 3. Archaeology

The RCHME Archaeological Assessment of The Green Park (1994) states that there are no surface features that merit detailed survey. However archaeological potential for unseen and unrecorded features remains high. The overall policy for archaeology is to conserve and protect the existing and hidden features *in situ*.

### 4. Biodiversity

The Green Park in itself currently has comparatively low wildlife appeal (although as a set, the four contiguous Royal Parks in central London represent a considerable biodiversity resource). The policy is to enhance the value of the Park for nature conservation through appropriate management and in conjunction with the Local Biodiversity Action Plan.

Particular opportunities are presented for the creation of more diverse grassland meadows and to link with on going initiatives in the adjacent Parks. Establishing some extent of understorey in conjunction with native trees would provide nesting and feeding opportunities for songbirds.

## **5. Park Management and Consultation**

Royal Parks will endeavour to pursue its management of The Green Park in an open and transparent manner, for and on behalf of its users and visitors. The Royal Parks will undertake consultation and work constructively with stakeholders including the local community through the Local Authority, the Friends groups, wildlife groups, neighbours and other 'visitor' attractions, organisations, volunteers and interest groups.

## **6. Quality**

Royal Parks will strive to maintain high standards in maintenance of infrastructure, buildings, landscape and cleanliness within a continuum of informed improvements. Royal Parks will also give priority to maintaining the Park as a safe visitor facility and will attend promptly to acts of vandalism within the Park.

## **7. Greenspace/Amenity**

The Green Park will continue to fulfil its role as Metropolitan Open Land, continuing to function, along with the contiguous Royal Parks of St James's Park, Hyde Park and Kensington Gardens, as a natural and tranquil greenspace in the heart of central London. The Green Park will provide opportunities for free public access for relaxation, quiet enjoyment of the natural surroundings, and informal recreation and act as a counterpoint to urban culture. The Park will make a positive contribution to the quality of life for the local community and visitors and enhance the quality of the urban environment.

## **8. Sustainability**

The Royal Parks will strive for the highest standards of environmentally sustainable park management. This will include every effort to minimise energy consumption and emissions, to reduce waste through recycling practices, including composting and to pursue other opportunities for recycling including re-use of water. Application of chemicals will be minimised in compliance with good horticultural practice and use of water resources will be judicious. The importance of the Royal Parks in meeting wider sustainability objectives, for example in maintaining quality of urban life, will be considered in all aspects of Park management and further opportunities for connecting with the wider sustainability agenda will be considered.



## **PART 4: MANAGEMENT POLICIES**

---

The following chapters contain overall management policies covering the different elements of St James's Park and The Green Park landscape. These general policies have been developed to achieve the aims and objectives of the landscape management strategy. They are grouped under five main headings:

Guiding Policies for Conservation;

- Landscape Character and Management
- Physical Context
- Natural Fabric
- Built Fabric
- Public Access and Enjoyment;
- Character Areas & Views





## 14.0 GUIDING POLICIES FOR CONSERVATION

---

### Policy CON1: Landscape Character

**CON1:** St James's Park and The Green Park will be managed to conserve and enhance the historical complementary and contrasting landscape characters of each park. The Parks will continue to provide a legible parkland setting for adjacent buildings including Buckingham Palace and Whitehall, and a recreational and ecological resource in the heart of central London. The Parks should be perceived as an intact parkland landscape, with views to a green horizon created by the tree canopy, not visually impinged on by development beyond the Park.

CON 1.1. Visitor pressure: The Park needs to retain its landscape character while being safe and accessible for visitors. The park fabric should be conserved by regular maintenance and repair.

CON 1.2. Working in partnerships: The Royal Parks to maintain good relationships and work in partnership with neighbours occupying the adjacent building to conserve the character of the Park including significant views, enclosure and skyline.

### Policy CON2: Historic Character

**CON2:** The two Parks are very different in character though linked by their historical development. St James's Park presents the still dominant layout of the Nash Landscape while The Green Park retains an essence of countryside. The Parks have had additions, removals and adaptations, much from Victorian times in the form of the bandstand, temples, monuments and sculpture. The process has continued through the 20th century with its use as a public park with the addition of memorials (Canada Memorial, Commonwealth Memorial Gates, Bali Memorial and the National Police Memorial). The overall policy is to conserve and reinforce the basic pattern and character of the Nash design in St James's Park and the rural qualities of The Green Park.

CON 2.1. Nash Layout: Conserve, reinforce and celebrate the important historic landscape of St James's Park created by Nash and represented by the lake, path network, plantations, tree planting and shrubberies. Consider the effect of any management change on both the individual landscape features that contribute to the pattern, the key views and vistas, and the essential spirit and ambience of Nash.

CON 2.2. The rural qualities of The Green Park: Conserve, reinforce and celebrate the countryside ambience by resisting over development of the Park with facilities and activities. Continue the relaxed mowing regime and meadow creation, and managed the trees (particularly the thorn trees) at the heart of the Park to retain the open parkland quality.

CON 2.3. Layers of history: Recognise and conserve the layers of history that created the Parks ranging from the valley created by Tyburn Brook, early groundworks, and the significance and extent of later adaptation and additions. Maintain the formal avenues and landscape set pieces that

counterpoint the relaxed and sinuous character of the Parkland that lies within. Ensure all features and their setting are maintained to a high quality.

### **Policy CON3: Biodiversity**

**CON3:** The Parks provide important biodiversity resource in the heart of London and is recognised as a Site of Metropolitan Importance for Nature Conservation (SMI) in the Mayor's Biodiversity Strategy. The existing natural assets will be conserved and enhanced and the Parks with the aim to maximise the biodiversity contribution of existing components; there are limited opportunities for further habitat creation.

**CON 3.1. Ecological Survey:** An ecological survey of habitats and species has been commissioned and will occur within the next 12 months. The survey will develop a biodiversity information base of species and habitats, with ecological data being stored as part of The Royal Parks Biological Recording System. The surveys will follow appropriate guidelines in line with the Royal Parks Community Ecologist review of the Biological Recording System in partnership with the Greenspaces in Great London organisation. This will improve the storing of existing data and ensure the information is consistent and which can be shared with other London organisations. The review will also prepare the data for Geographical Information System compatibility.

**CON 3.2. Wildlife Management Strategy:** In association with the ecological surveys, will develop a Wildlife Management Strategy, with the aim of meeting corporate aims and responsibilities to conserve and enhance biodiversity. The wildlife management strategy should be informed and guided by the historic layout and respect key views and connections within the Park. It should include proposals for:

- grassland management - many areas of grassland within The Green Park already benefit from sensitive management through meadow regimes. The habitat surveys noted above may reveal further issues and opportunities for grassland management. There is potential to extend meadow regimes in some areas, reflecting historic precedent and to implement local differences and timing of cuts;
- management of scrub and woodland on the islands;
- wildlife beneficial management of horticultural areas;
- management of the tree resource to ensure longevity of individual specimens, including retention of dead wood in situ, where possible, to benefit invertebrates;
- management of the Lake to integrate ecological management with recommendations for water quality.
- partnership project such as the RSPB/Sparrow Project.

**CON 3.3. Ecological Monitoring:** The ecological surveys and Wildlife Management Strategy should provide a foundation of ecological monitoring, which will aim to collect standard repeatable information for managers to detect changes in the ecological condition of the Park. Results should form

part of the information base stored as part of the Biological Recording System which will be reviewed with Greenspaces in Greater London (GiGL) and will allow sharing of data. This will provide the Royal Parks with a system for recording data that is consistent and accessible.

**CON 3.4. Partnership:** The Park Management will adopt a partnership approach to management of the biodiversity resource. This will include working with and supporting the Central Royal Parks Wildlife Group and strengthening links with local, regional and national biodiversity initiatives, including partners in the local authorities.

**CON 3.5. Steering Groups:** HAP BAPS for Westminster

#### **CON4: Sustainability**

**CON4:** The Royal Parks will strive for the highest standards of environmentally sustainable management through the Parks and will contribute to wider sustainability objectives including enhancing urban quality of life. The Royal Parks will continue to be compliant with BS: EN: ISO 14001:1996 and committed to a Green Housekeeping policy (1997).

**CON 4.1. Use of Chemicals:** The use of chemicals – insecticides, molluscicides, herbicides etc will continue to be kept to the minimum necessary, in compliance with good horticultural standards and requirements for public health and safety.

**CON 4.2. Water and Drainage:** The use of water for irrigation will be kept to the minimum possible within the constraints of maintaining high horticultural standards. Wherever possible, SUDS (sustainable urban drainage systems) will be considered in relation to any built development or hard surfacing. Artesian Wells are currently used as an alternative source of water to mains licensed supply.

**CON 4.3. Energy and Recycling:** Onsite and off-site energy consumption and emissions will be minimised to the greatest extent possible through encouraging sustainable forms of transportation within the Parks, encouraging public transport to reach the Park, and minimising the need for transport of goods and waste to/from the site, for example through on site recycling.

The park will continue to seek innovative opportunities for recycling and energy saving initiatives such as use and re-use of biodegradable plastic pots, in preference to petroleum based pots.

**CON 4.4. Green Waste Composting:** All leaf litter, shrub matter or green waste will continue to be composted at Kensington Gardens and used for maintenance within the Parks.

**CON 4.5. Use of Peat:** The Park will implement results of peat free compost trials for large scale growing of bedding plants and monitor results.

## PHYSICAL CONTEXT

### Policy PHY1: Geology and Topography

**PHY1:** The underlying geology and topography have helped shape the Parks we see today. The Nash landscape created with its gently undulating and sinuous curves help create the intimate character of the Park. The gravel terraces in The Green Park mean that the Park slopes significantly from Piccadilly down to the Queen Victoria Memorial Gardens (particularly along Queens Walk).

PHY 1.1. Topography: This will be conserved due to its contribution to the landscape setting. The steep slope along Queens Walk restricts this area to pedestrian use and conversion to a cycle path should be resisted.

### Policy PHY2: Soils, Hydrology and Drainage

**PHY2:** The soils, hydrology and drainage should be considered when implementing projects particularly tree planting

PHY 2.1. Tree planting: appropriate locations and species type should be considered carefully in relation to the physical conditions.

## NATURAL FABRIC

### Policy NAT1: Trees

**NAT1:** The overall policy for trees in St James's Park and The Green Park is to maintain a healthy, safe and substantially mature population of trees, with appropriate species and distribution, providing continuity of authentic historic pattern in avenues, clumps and groupings. Choice of species should be informed by the historic palette. The importance of trees as a habitat for a wide range of species will continue to be recognised and due regard to wildlife law given in planning and undertaking tree works.

Draft Tree Strategies exist for both Parks (The Green Park Draft Tree Management Strategy, Colvin and Moggridge 2007 and St. James's Park Draft Tree Management Strategy, Harraway Tree Services, 2001), building on the results of the 1982 tree survey. This Management Plan includes detailed policies for both avenue trees and non-avenue trees. Note that a guiding plan for the management of trees in the Royal Parks has recently been completed.

NAT 1.1. Tree Survey: This needs to be kept up to date in electronic format with the Royal Parks Arboricultural Officer ensuring the data is maintained and managed.

NAT 1.2. Tree Inspection: Continue the regular tree inspections in accordance with agreed Royal Parks Risk Assessment Strategy. It is recommended that results are recorded in the database, with prescriptions and a record of any work completed.

NAT 1.3. Partnership with Local Planning Authority (LPA): The whole of St James's Park and The Green Park are within a Conservation Area, administered by the City of Westminster. All trees (above a minimum trunk diameter) are therefore effectively safeguarded with six weeks notice required to the LPA to consider in advance of any work to a tree. It is recommended that a detailed tree management plan is developed setting out planned maintenance as a basis for liaison with the LPA. The plan should be updated annually. The aim should be to avoid the need for liaison in relation to individual tree works, providing the work is in line with the annual plan.

NAT 1.4. Retention of Dead Wood: St James's Park and The Green Park will continue to implement a policy to retain dead wood in situ in areas inaccessible by the public. Both standing (in living or dead trees) and lying decaying wood (and stumps) are important for saproxylic invertebrates (a UK BAP Priority species group). Mature trees with rot holes and hollows in the limbs and trunk also provide nest site for birds and roost sites for bats. Where natural holes are absent nest boxes are recommended.

NAT 1.6. Tree Provenance: Where possible and appropriate all tree stock should be of local or UK provenance.

NAT 1.7. Tree Avenues: The major avenues of Plane trees that create the structure of the Parks needs to be managed for the future. A long term strategy for succession needs to be put into place.

NAT 1.8. Trees in Parkland: Each tree location and species needs to be selected for its purpose, visually and ecologically. Trees need to be managed and maintained considering their impact on views into the Park, within the Park and views to surrounding features.

## **Policy NAT2: Grasslands**

**NAT2:** The extensive area of grassland, with trees is central to the naturalistic verdant character of St James's and The Green Park. The management aim, as successfully applied, should be to continue to apply differential mowing regimes to include meadow, lawn and amenity grassland. Deliberate and selective mowing regimes should be used to reinforce the distinction between the different character areas and as a way of guiding public use of the different areas. Co-ordinated and consistent meadow management regimes should be applied, where appropriate to enhance biodiversity interest.

NAT 2.1. Grassland strategy: A more detailed grassland strategy should be developed including a revised plan indicating frequency and timing of mowing and reinforcing consistent grassland management regimes. The grassland strategy will need to take account of:

- the historic landscape and particularly reflect the policy for non avenue trees/parkland planting of the quarters and contrast of these with more open grassland areas;
- need to restrict active sports (football/ball games) and direct activity away from the more sensitive 'quarters';

- protecting areas of conservation interest from damaging impacts (dog fouling, excessive disturbance, trampling, fire etc);

NAT 2.2. Baseline Ecological Data for all areas: There will be baseline ecological data collected and managed by the Royal Parks with the assistance of the Greenspaces in Greater London (GiGL) Data Manager. The data collection and recording will conform to the standard enabling easy transfer of data between organisations and onto a Geographical Information System (GIS). In the run up to the 2012 Olympics essential flora data for the Parks will be collected to enable planning for the events and cultural activities being held in the Parks.

NAT 2.3. Key Principles for Biodiversity Management of Grassland: In managing grassland areas, the aim should be to enhance the quality of the grassland for flora, fungi, invertebrate interest, birds and small mammals. The following key principles for biodiversity management of grassland should be considered and balanced with historic, landscape consideration and public use of the Park. :

- Biological data reviewed and advice sought from a competent person before any change in management;
- Cutting method (or other works) and timing determined according to the ecological interest and features of the site;
- Removal of arisings after cutting should normally be carried out to reduce nutrient levels, but arising should not be cut and removed in a single operation to allow survival of invertebrates and seed to be shed;
- Ensure differential cutting of each habitat patch, with adequately sized uncut refuges maintained for over wintering invertebrates;
- Consider and carefully assess options for habitat enhancement by species introduction in some locations;
- Seek to protect areas of special conservation interest from damaging impacts.

NAT 2.4. Amelioration of damaged areas: There will be a prompt response to amelioration of damaged grassland areas involving improvement of the soil environment, and reseeded/turfing. Grassland seed and turf mixes should respond to the objectives of the grassland strategy. Where there is a requirement for the importation of topsoil this should meet quality standards and be appropriate in relation to the objectives of the grassland strategy.

## HORTICULTURAL AREAS

### Policy NAT3: Horticultural Displays

**NAT3:** The horticultural display areas in St James's Park are very prominent and significant areas and should be retained as such. The areas of high horticultural display should be limited to Queen Victoria Gardens, the Storeyard border, Leafyard border, the Dell and the Jungle border. These garden areas should be of a high design and quality and provide an elegant, yet formal contrast to the more relaxed, verdant character of The Green Park and the Nash landscape in St James's Park. There will be a general presumption against the creation of new or additional areas of horticultural display within the informal parkland setting, unless there is a historic precedent. Wildlife benefits will be considered in the management of horticultural areas. All horticultural areas will be managed with a minimum of chemical/pesticides and be 'peat free'.

**NAT3.1: General Management:** The horticultural areas will be managed to provide seasonal interest and variation for the delight of visitors. The condition and nature of planting will be reviewed regularly and rejuvenated as required. The colour of annual bedding schemes will be carefully designed and controlled. Wildlife benefits will be considered in the planning and management of horticultural areas, including provision of structure and cover, food sources, and species provenance.

**NAT 3.2: Queen Victoria Gardens:** The gardens will be managed to the very highest standard expected by the visiting public due its location and setting for many televised events. The irrigation system will be maintained and managed to minimise the use of mains water. The bedding displays will be both summer and autumn designs.

**NAT 3.3: Storeyard, Leafyard and boat house borders:** These areas have the potential to be managed for nature conservation. The areas will be managed to high horticultural standards using methods to reduce the use of mains water, peat and pesticides.

**NAT 3.4: Roses:** The Queen Mother Rose beds to be rearranged improve the visual appearance of the north side of the lake as the roses are failing due to the heavy tree canopy cover and slope.

**NAT 3.5: The Dell:** This area was formally known as the rockery and the design and management is changing to give the feature a less domestic appearance. The area will develop to complement the rest of the Storeyard border, Boathouse border and Inn the Park restaurant.



## Policy NAT4: Ecology and Wildlife

**NAT4:** Due to the limited amount of greenspace in central London the Parks play a key role for nature conservation. The Royal Parks should continue to work with other organisations as part of the London Biodiversity Partnership and more recently Greenspace in Greater London to consider the existing wildlife, monitor and share data as part of the management of the Parks.

**NAT 4.1. Baseline Biological Data:** The biological data held by The Royal Parks will be reviewed and managed with the assistance of the Greenspaces in Greater London (GiGL) Data Manager. The data collection and recording will conform to the standard enabling easy transfer of data between organisations and onto a Geographical Information System (GIS). The Royal Parks will continue to encourage volunteers to help collect and record data.

**NAT4.2: Principles for Management of Shrub/Refuge Areas for Wildlife interest:** The following recommendations apply to the shrubberies around the Leafyard margins, hedges and other small fenced areas.

- Retain tree and understorey cover for nesting birds;
- Ensure species protection and compliance with species protection legislation by appropriate timing of works e.g. to protect breeding birds, to maintain continuity of habitat, and avoid disturbing bats;
- Retain refuge areas by ensuring rotational management of areas of potentially invasive species that are important to wildlife such as brambles and nettles to maintain a diverse habitat structure;
- Planting of native species e.g. native hedges in the Leafyard;
- Leaf litter retained in fenced areas.

## Policy NAT5: Water body and Lakeside

**NAT5:** The Lake, lakeside and islands are significant features in St James's Park for their landscape qualities and nature conservation value. The water fowl, views across the water and the recently restored fountain delight the visiting public. The water quality needs to be managed to encourage biodiversity and wildlife as well as retaining the aesthetic value, views and landscape setting.

**NAT5.1: Water Quality:** Continue to monitor water quality and implement strategies to reduce water pollution and ensure water meets aesthetic and health and safety standards. This will include regular removal of debris, dredging and sediment control and removal of leaves from hard surfaces and amenity grassland, surrounding the water bodies. Alternative solutions to control algal blooms, including use of straw, aeration techniques and ultrasound devices, have been explored. The use of herbicides to control algal bloom will be avoided.

NAT5.2: Water Body Maintenance and Control: Continue to maintain the infrastructure of the water bodies including desilting, maintenance and operation of valves and sluices and maintenance and repair of banks and islands, using methods appropriate to the historic landscape. Management of water levels to be monitored and controlled using sluice gates and well water.

NAT5.3: Reedbed Management: Continue to maintain and develop the existing reedbeds at the side of the Lake not only to soften the bank edge and create an attractive feature but also to enhance the habitat. Guidance from the London Biodiversity Partnership Habitat Action Plan to be followed to meet targets for this habitat type in central London.

NAT 5.4: Lake Margin Management: Continue to maintain both the green sward and wildflower communities bordering the lake to enhance habitat and preserve water quality. Manage tree populations to retain and enhance important framed views across the water, whilst maintaining low hanging branches for habitat creation.

## **BUILT FABRIC**

### **Policy BUIL1: St James's Park - Buildings and Structures**

BUIL1: The importance of buildings and structures to the character of St James's Park will be respected and all buildings, particularly Listed buildings, will be maintained to a high standard of physical repair, visual quality and usability. There will be a general presumption against the construction of new buildings. Use of buildings should relate strongly to park visitor or staff needs.

#### **Management guidelines:**

BUIL1.1: Review future public access to and maintenance of the 'Inn the Park' roof area.

BUIL1.2: Review current storage capacity and staff facilities within the Park to ensure efficient use of space and to identify any deficiencies in provision.

BUIL1.3: Manage the setting of the Park buildings to maintain a historically and visually appropriate relationship with the Park landscape.

BUIL1.4: New buildings will only be contemplated when they are considered essential for public use and enjoyment and any proposals will be fully reviewed against the policies in this management plan.

### **Policy BUIL2: St James's Park - Monuments and Main Artefacts**

BUIL2: The current number and character of artefacts and monuments (mainly in the outer park) shall be retained and will be maintained to a high physical and visual standard, particularly those of Listed status. Generally there will be a presumption against the introduction and proliferation of new permanent statues/artefacts.

### **Management guidelines:**

BUIL2.1: New monuments or artefacts shall only be introduced when they make a positive contribution to the Park landscape, in full consultation with the relevant stakeholders. Any new installations will generally be restricted to the outer park. Where permitted they will be designed for the location and appropriately integrated into their selected setting in the Park.

BUIL2.2: Explore funding sources to enable the lake fountains to be made operational (including the potential replacement at original location near Duck Island Cottage).

### **Policy BUIL3: St James's Park - Boundaries and Gates**

BUIL3: The Royal Parks will promote an appropriate image and sense of entry to St James's Park through provision of high quality boundaries and gateways that are functional and reflect the historic character of the Park.

### **Management guidelines:**

BUIL3.1: All gateways and park boundaries will be maintained to a consistent and high standard, reflecting a positive image of the Park and with gateways providing a welcoming point of entry to visitors. Repainting of railings and ironwork will be undertaken as part of a regular maintenance regime.

BUIL3.2: Internal fencing will be maintained to a high visual and functional standard. Ineffective or inappropriate barriers will be replaced or removed. The illusion of subtle vegetative enclosure will be maintained around the Storeyard, the Leafyard and other staff enclosures to screen any unattractive security fencing.

BUIL3.3: Develop a strategy defining the appropriate styles of fencing and their locations in the inner and outer park (to be developed in parallel with The Royal Parks Landscape Design Guide). In particular, review the fencing around the lake edge to ensure robust for purpose and not visually intrusive.

BUIL3.4: Review the location of internal low-level railings with consideration of the need to sensitively relocate or reintroduce short sections of low railing to steer foot traffic back onto paths where desire lines are developing. However, avoid proliferation.

BUIL3.5. The Royal Parks will work in partnership with the local planning authorities and neighbours in seeking to ensure that the immediate environs of the Park provide an appropriate setting and do not adversely impact on views from, or the experience within the Park.

### **Policy BUIL4: St James's Park - Road and Path network**

BUIL4: All necessary hard surfacing will be maintained to a high standard of physical repair, suitable for its purpose and sympathetic to the historic parkland setting. The contrasting character of the wide spacious ceremonial avenues and parade grounds of the outer park versus the curving sinuous paths of the inner park will be retained as they serve well the existing

intensive patterns of access. There will be a general presumption against the encroachment of further areas of hard surface within St James's Park, except where there are specific public needs or safety requirements.

#### **Management guidelines:**

BUIL4.1: The existing paths and surfaces will be maintained to a consistent and high standard, using a bound gravel surface that is in keeping with the historic landscape and contributes to the distinctive character of the Park. Patch repairs will be specified to match existing and undertaken to a similar standard to ensure a visually integrated path surface.

BUIL4.2: Investment in drainage repair and restoration of grass edges needs to continue as part of the ongoing maintenance programme to improve path edges, particularly at path junctions.

BUIL4.3: Explore alternative surfacing solutions to bind/fix the existing loose gravel surface along the flanking walkways of The Mall to reduce the dust issue.

BUIL4.4: Explore possibility for increasing timetabled closures of the Park roads to vehicles in order to maximise capacity for pedestrians and reduce the intrusion of traffic on the quality of the Park landscape.

#### **Policy BUIL5: St James's Park - Park Furniture and signage**

BUIL5: High quality co-ordinated park furniture (lamp standards, bollards, benches, bins, and signage) will be provided to enhance public enjoyment of the Park. All furniture will be maintained to a high standard and provide a positive visual contribution to the Parkland setting.

#### **Management guidelines:**

BUIL5.1: Develop a strategy defining appropriate and related styles and locations for the various types of furniture in the Park. As well as coordinating the furniture within St James's Park there will also be some co-ordination or 'branding' across the Royal Parks as a whole to reinforce a consistent image of the Royal Parks and make best use of available styles (this will be dealt with in the forthcoming Design Guide).

BUIL5.2: All furniture will be maintained to a high standard, to a consistent and regular maintenance regime. Damaged or broken items will be repaired or replaced as a priority to reinforce the image of this high quality and distinctive landscape.

BUIL5.3: The existing number and location of bins and benches is generally considered to be appropriate, although some local removal/relocation and co-ordination of bins is required. All furniture will be appropriately sited to ensure that it makes a positive contribution to the historic and parkland setting. In particular special attention will be paid to ensure that key views are not cluttered.

BUIL5.4: Lighting will continue to be provided and maintained in the outer and inner park to provide safe access routes at night. Floodlighting of the trees and selected features such as the statuary which enhances night time views into the Park will be maintained but increasing the quantity of lighting from the current provision will be resisted particularly through the inner park where it conflicts with nature conservation. Existing Listed lamp standards will be conserved and maintained in working order ensuring light levels are appropriate for safety and the visual character of the Park.

### **Policy BUIL6: The Green Park - Buildings and Main Structures**

BUIL6: The notable absence of buildings and structures from The Green Park (with the exception of the two kiosks) is part of the character of the Park and there will be a general presumption against the construction of new buildings or structures.

#### **Management guidelines:**

BUIL6.1: New buildings will only be contemplated when they are considered essential for public use and enjoyment and any proposals will be fully reviewed against the policies in this management plan.

### **Policy BUIL7: The Green Park - Monuments and Main Artefacts**

BUIL7: The general absence of permanent statuary, monuments and ornament from The Green Park is characteristic of the Park and there will be a presumption against the installation and proliferation of new features.

#### **Management guidelines:**

BUIL7.1: New monuments or artefacts shall only be introduced when they make a positive contribution to the Park landscape, in full consultation with the relevant stakeholders. Where permitted they will be designed for the location and appropriately integrated into their selected setting in the Park.

BUIL7.2: The character and condition of the existing artefacts and monuments will be maintained to a high physical and visual standard.

BUIL7.3: Explore possible funding sources to enhance the setting of the Constance Fund Fountain and to make it operational.

### **Policy BUIL8: The Green Park - Boundaries and Gates**

BUIL8: The Royal Parks will promote an appropriate image and sense of entry to The Green Park through provision of high quality boundaries and gateways that are functional and reflect the historic character of the Park.

#### **Management guidelines:**

BUIL8.1: All gateways and park boundaries will be maintained to a consistent and high standard, reflecting a positive image of the Park and with gateways

providing a welcoming point of entry to visitors. Repainting of railings and ironwork will be undertaken as part of a regular maintenance regime.

**BUIL8.2:** Develop a strategy defining the appropriate styles of fencing for use on the Park boundary (to be developed in parallel with The Royal Parks Landscape forthcoming Design Guide).

**BUIL8.3:** The Royal Parks will work in partnership with the local planning authorities and neighbours in seeking to ensure that the immediate environs of the Park provide an appropriate setting and do not adversely impact on views from, or the experience within the Park.

**BUIL8.4:** The Royal Parks will work in partnership with London Underground to improve the views from and aesthetic appearance of Ritz Corner.

**BUIL8.5:** Continue to work in partnership with London Regional Transport to improve the aesthetic appearance of access into Green Park from the Underground Station and Piccadilly.

**BUIL8.6:** Improve access to entrance with T and L from Hyde Park Corner on Constitution Hill.

### **Policy BUIL9: The Green Park - Road and Path network**

**BUIL9:** All necessary hard surfacing will be maintained to a high standard of physical repair suitable for its purpose and sympathetic to the historic parkland setting. The contrasting character of the formal avenue of Constitution Hill and the Broad Walk in relation to the otherwise informal path layouts will be retained. There will be a general presumption against the encroachment of further areas of hard surface within The Green Park, except where there are specific public needs or safety requirements.

### **Management guidelines:**

**BUIL9.1:** The existing paths and surfaces will be maintained to a consistent and high standard, using a bound gravel surface that is in keeping with the historic landscape and contributes to the distinctive character of the Park. Particular focus will be given to the intensively used routes between Green Park underground station and Canada Gate. Patch repairs will be specified to match existing and undertaken to a similar standard to ensure a visually integrated path surface.

**BUIL9.2:** Investment in drainage repair and restoration of grass edges needs to continue as part of the ongoing maintenance programme to improve path edges, particularly at path junctions in the south eastern area of the Park.

**BUIL9.3:** Realign the paths in the southeast corner of the Park to reduce the major desire lines which have developed. Consider removing underused paths in this area to simplify the path network. All path works to be planned in conjunction with improvements to cycle routes.

BUIL9.4: Review the existing access arrangements in and around Canada Gate; explore solutions to the pedestrian/traffic conflict.

BUIL9.5: Explore possibility for increasing timetabled closures of Constitution Hill to maximise capacity for pedestrians and reduce the intrusion of traffic on the quality of the Park landscape.

**Policy BUIL10: The Green Park - Park Furniture and signage**

BUIL10: High quality co-ordinated park furniture (lamp standards, bollards, benches, bins, and signage) will be provided to enhance public enjoyment of the Park. All furniture will be maintained to a high standard and provide a positive visual contribution to the Parkland setting.

**Management guidelines:**

BUIL10.1: Review the bench types, numbers, locations and state of repair to inform the forthcoming Design Guide being developed by The Royal Parks, which will in turn provide a reference guide to the appropriate choice of furniture for the Park.

BUIL10.2: Review the number and location of litterbins with a view to having fewer litterbins of larger capacity in an appropriate style and colour to reflect benches and lampposts in the Park.

BUIL10.3: All furniture will be appropriately sited to ensure that it makes a positive contribution to the historic and parkland setting. In particular special attention will be paid to ensure that key views are not cluttered.

BUIL10.4: Retain Listed lamps and maintain in working order ensuring light levels are appropriate for safety and the visual character of the Park.



**Figure 14.1 Photo Sheet St James's Park**



Nash Floriferous Shrubbery



Corporate Volunteer day planting reedbed



Aerial photograph



View of Field of Gold



Inn the Park Restaurant



Reed bed and lake edge



## **PUBLIC ACCESS AND ENJOYMENT**

### **Policy PUB1: Visitor Experience**

**PUB1:** St James's Park and The Green Park should continue to offer a high quality, safe and attractive historic parkland environment, which provides a range of natural settings appropriate for a variety of quiet recreational use to cater for the high number and diversity of people who visit the Parks each year. The park will provide opportunities for peaceful relaxation and quiet informal recreation activities as well as host and provide the setting for national and international events and ceremonies.

**PUB1.1:** Partnership working should be continued as part of the St James's Park experience. Joint initiatives and funding opportunities should be pursued to improve the visitor experience.

**PUB1.2:** Visitor Survey: The Royal Parks will continue to undertake an annual visitor survey of park use and visitor satisfaction and will respond to finding in improvements to park management.

**PUB1.3:** Audience Development: The Royal Parks will undertake research on the potential audience for St James's Park and The Green Park. This should include communities in close proximity to the Park who currently do not use the resource.

**PUB1.4:** Signage, Maps and Interpretation in the Parks have recently been renewed; also leaflets of the St. James's Park experience are now available. Location of finger posts and map boards should be considered. Opportunities to work with other organisation such as Jubilee Walkway Trust and Central London Partnership should be taken to improve interpretation and wayfinding.

**PUB 1.5 Access for All:** Access for all is an objective throughout the Parks and the need of physically and visually impaired visitors and others with special needs will be taken into account in any review of infrastructure/new schemes and in line with the requirements of the Disability Discrimination Act.

### **Policy PUB2: Public Safety**

**PUB2:** The Parks should continue to provide a safe and security environment for visitors to enjoy while working within the Government Security Zone. Traffic management and infrastructure changes should also be considered to improve safety and crowd management.

**PUB 2.1:** Health and Safety Standards: All applicable UK and European health and safety standards shall be enforced throughout the Parks, including the repair of infrastructure, water quality, events control, food standards, etc.

**PUB 2.2.** Crime: The Royal Parks will work with the Royal Parks Operational Command Unit sensitively to maintain the low levels of crime

currently enjoyed and to seek opportunities for the further reduction of crime. A policy of community policing shall continue to be pursued with the Safer (Neighbourhood) Parks initiative.

PUB 2.3. Vandalism: The Royal Parks shall ensure that vandalism is kept to the minimum through consideration of potential vandalism in developments and provision of infrastructure, although this will not be allowed to unbalance other aspects relating to visitor comfort, historical considerations, or visual quality. The removal of visible signs of vandalism will be a priority. Graffiti will be removed within 24 hours and other infrastructure repaired at the earliest practicable opportunity.

### **Policy PUB3: Visitor Circulation**

**PUB3:** Pedestrian priority will apply throughout within the greenspaces of the Parks. Visitor circulation routes will respect the historic pattern and provide easy and convenient routes between main points of interest and vantage points within the Park and provide pedestrian routes through and across the Park. Vehicle access will be limited to that necessary for landscape maintenance/park management and the road network.

PUB 3.1. Pedestrian Circulation: Peaceful pedestrian enjoyment of the Parks will be encouraged and considered as a priority in relation to other potentially shared uses. The use of non- motorised scooters, skateboards etc. will be tolerated providing they do not adversely impact on pedestrian users or the Park infrastructure. Roller bladers will have shared use of the paths with cycle use and encouraged to use these routes, with appropriate path surfacing used to control use on other paths. Other non-pedestrian uses will not be given separate provision within the Park.

PUB 3.2. Cycling: The Royal Parks recognises the importance of the cycle routes in the Parks as a link in London's cycle network and for casual cycling. Existing provision should be improved with signage and minor infrastructure changes. Cyclists will be made aware of pedestrian priorities in shared areas and encouraged to ride safely and responsibly. The Royal Parks will also explore opportunities for the provision of cycle racks in relation to the existing network. The policy is to restrict cyclists to these routes within the Park. Children cycling under the supervision of a (pedestrian) adult will be permitted access throughout the Park.

PUB 3.3 Traffic: Road infrastructure should be reviewed regularly in relation to road traffic accident reports so that adjustments can be made to improve safe visitor circulation. Increasing the pedestrianised area in front of Buckingham Palace could be considered for these reasons. A study of this area has recently been undertaken.

## **Policy PUB4: Visitor Facilities**

**PUB4:** A range of facilities will continue to be provided to enhance the value of the Parks for public use. Careful management will ensure that the peaceful character (of the inner Parks) and the historic landscape is retained while meeting visitor expectation in terms of activities and facilities provided. The Royal Parks will ensure that all facilities provided within the Park are of appropriate capacity, are suitably located within the landscape are of a high standard and quality, cater to a wide audience and provide 'access for all'. St James's Park has imaginative and popular children's play facilities which will continue to be an essential provision.

There will be a general presumption against the provision of additional facilities in the Park that would alienate park territory to a specific user group. Where enhanced facilities are required, existing buildings park will be used, as opposed to the construction of additional buildings.

PUB 4.1. Refurbishment or rebuilding of facilities such as the toilets should be considered where provision is poor quality and does not meet standards.

PUB 4.2. Catering: The visitors' surveys identified a need for enhanced catering facilities. Further investigation should be carried out to assess how this could be improved.

## **Policy PUB5: Education and Interpretation**

**PUB5:** The significance and value of St James's Park and The Green Park will be interpreted to visitors to enhance their enjoyment and appreciation of the Parks. A variety of mediums will be available for interpretation, with the emphasis on subtle communication and engagement of visitors rather than overt signage. This will be combined with more formal educational opportunities in the form of organised activities, such as walks and talks and information for schools.

PUB 5.1. Working in partnership: projects such as the St James's Park Experience or working with specific organisations will be pursued to improve the interpretation and wayfinding within the Park.

PUB 5.2. Interpretative Material: The Royal Parks will continue to explore opportunities for provision of interpretation to enhance visitor experience. This will include the provision of themed leaflets, potentially associated with trails; information displays on existing signboards and occasional sensitively sited interpretation in relation to specific features. Signage will be of a consistent and high quality style appropriate to the location. The overall aim should be avoid clutter and proliferation of signs in the Parks.

PUB 5.3. The park management will seek to increase outlets for dissemination of visitor information, for example use of existing catering facilities and the potential visitor/education centre.

PUB 5.4. Guided Walks and Small Scale Interpretative Events: The park management will continue to provide, encourage and support a regular

programme of small scale interpretative events and guided walks by the Royal Parks team and other interested groups such as the Thorney Island Society. Special consideration will be given to occasional small community events that seek to widen the audience of the Park, for example attracting local residents that currently do not visit the gardens.

**PUB 5.5. Education to Minimise Management Conflict:** Educational information will be used to inform visitors in order to minimise conflicts. This will include explaining potentially controversial management decisions (e.g. tree relocation) and explaining to the public why their actions may create management problems, such as nutrient enrichment problems associated with duck feeding or dog fouling in meadows.

### **Policy PUB6: Sports and Active Recreational Uses**

**PUB6:** Passive recreation and peaceful enjoyment of Parks will be promoted in preference to more active formal sports, which are generally unsuitable given the importance of the historic landscape, few extensive expanses of grassland and predominance of trees, in avenues and parkland plantings (in contrast, for example to Hyde and Regents Park, where there are significant expanses of grassland without trees).

**PUB 6.1. Football/Ball games:** Football and ball games generally, have become increasingly popular in recent years and resulted in conflict with the peaceful ambience of the Parks and the historic landscape causing damage to new trees and wear of grass surfaces. The policy is to encourage passive recreation and peaceful enjoyment, and through appropriate and subtle landscape management seek to limit active formal sports and direct activities to suitable/preferred locations within and beyond the Park. It is recommended that a ball games strategy is developed in conjunction with Hyde Park, other Royal Parks and Local Authorities.

### **Policy PUB7: Events and Entertainments**

**PUB8:** The Parks are the setting for many major events and ceremonies throughout the year as well as providing small scale community, arts or music activities within the Parks.

**PUB 7.1. Safety and security:** TRP to work with the Police and event organisers to ensure that appropriate systems are in place to deal with large crowds and associated security issues.

**PUB 7.2. Fabric of the Parks:** The park management should monitor the wear and tear on the Parks' landscape and built fabric and ensure that the upkeep of the Parks remains high.

### **Policy PUB8: Control of Animals**

**PUB8:** The Royal Parks will cooperate with owners to ensure that no animal brought to the Park represents a direct or indirect safety hazard for other visitors.

PUB 8.1. Type and number of animals permitted: Only safe, domestic animals may be brought to the Park by visitors. Dogs will be permitted within the conditions imposed by the Dog Walkers Code of Conduct/Royal Parks Regulations, which limits number of dogs per visitor, etc.

PUB 8.2. Control of Dogs: Dogs shall be kept under the control of owners and a series of dog-free and dog-leash zones will continue to be enforced to reduce conflict between different park users and for the protection of wildlife. Dogs shall be kept within sight and under control at all times and shall continue to be excluded from the children's playgrounds and from gated ornamental gardens.

PUB 8.3. Dog Faeces: The Royal Parks will seek to work with owners to reduce and ultimately eliminate dog faeces within the Park. To this end the Royal Parks will review the provision of adequate, suitably located dog bins.

PUB 8.4 Horses: The Royal Parks will seek to ensure horses are kept under control and limited to using the roads and horse rides.

## **CHARACTER AREAS & VIEWS**

The location of the Character Areas is shown on **figures 9.3 and 9.5**, in chapter 9.

### **ST JAMES'S PARK**

---

#### **Policy CHA1: St James's Park Views:**

**CHA1:** Ensure that strategic views, both inward and outward, are protected and that proposed developments which could affect views and related skyspace are examined and contained appropriately.

CHA1.1: Ensure that specific views within the Park are managed with particular respect to tree canopies, new planting and any proposed in-park works, to respect sightlines.

#### **Policy CHA 2: St James's Park Character Area 1 – Queen Victoria Memorial**

**CHA2:** Protect skyspace views of the Memorial and the setting of Buckingham Palace.

#### **Policy CHA3: St James's Park Character Area 2 – The Mall**

**CHA3:** Protect and conserve the historic character and formality of The Mall respecting its significance as a ceremonial and processional route.

CHA3.1: Manage and plan for appropriate succession of trees in flanking rows.

CHA3.2: Seek to reduce traffic impacts on the roadway with possibility of further timetabled road closure (as in Sunday mode)

### **Policy CHA4: St James's Park Character Area 3 – Birdcage Walk**

**CHA4:** Protect and conserve the historic character and formality of Bird Cage Walk respecting its significance as a ceremonial and processional route.

CHA4.1: Manage and plan for appropriate succession of trees in flanking rows.

### **Policy CHA5: St James's Park Character Area 4 – Horse Guards Road and Parade**

**CHA5:** Protect and conserve the historic character and formality of Horse Guards Road and Parade respecting its significance as a ceremonial and processional area.

CHA5.1: Seek to reduce traffic impacts with further consideration of timetabled road closure.

### **Policy CHA6: St James's Park Character Area 5 – The Lake**

**CHA6:** Protect the Nash outline, managing the lake edge with varied and appropriately soft marginal treatments which contribute to this visually attractive feature in the Park. Seek to enhance water quality and conserve and enhance the lake's biodiversity interest.

CHA6.1: Seek further enhancements to water quality and circulation systems.

CHA6.2: Continue programme of marginal enhancements to increase extent of reed bed and marginal aquatics, where necessary controlling access by waterfowl.

### **Policy CHA7: St James's Park Character Area 6 – Inner Park North**

**CHA7:** Seek to retain and strengthen Nash character.

CHA7.1: Restore/reinforce Nash shrubberies and planting patterns;

CHA7.2: Carefully adjust later imposed path alignments.

### **Policy CHA8: St James's Park Character Area 7 – Inner Park South**

**CHA8:** Seek to retain and strengthen Nash character.

CHA8.1: Refurbish Leafyard banks as rejuvenated and layered shrubberies, echoing Nash style.



**Figure 14.2 Photo Sheet The Green Park**



The Broadwalk



Queen Victoria Memorial Gardens



Canada Memorial



Meadow Area



Canada Gate Kiosk



Autumn Colour

## **THE GREEN PARK**

---

### **Policy CHA9: The Green Park Views:**

**CHA9:** Ensure that strategic views are protected.

CHA9.1: Ensure where formal view protection is not provided that development proposals which could threaten the quality and backdrop skyspace of views from the Park are examined, consulted upon and appropriately contained.

### **Policy CHA10: The Green Park Character Area 1 – Constitution Hill**

**CHA10:** Protect and conserve the historic character and formality of Constitution Hill respecting its significance as a ceremonial and processional route.

CHA10.1: Manage the tree canopy to respect axial views, also planning for appropriate succession.

### **Policy CHA11: The Green Park Character Area 2 – The Broad Walk**

**CHA11:** Conserve and manage the trees and grass setting as part of the wider formal layout relating to the Queen Victoria Memorial.

CHA11.1: Manage the tree canopy, planning also for continuity and succession.

CHA11.2: Improve drainage and grass surface repair in the lower (Canada Gates) section which is subject to very heavy use and shading.

CHA11.3: Review and redesign path layouts in response to spreading desire lines behind (closed) Canada Gates.

### **Policy CHA12: The Green Park Character Area 3 – The East Park**

**CHA12:** Retain the general sense of openness and wide views to the south.

CHA12.1: Manage and marginally reduce the tree canopy in the lower area. Carefully consider the location of any new planting to retain the openness of the upper area.

CHA12.2: Review and modify the pattern of paths and desire line in relation to pedestrian access in the approach to and at the rear of Canada Gate.

### **Policy CHA13: The Green Park Character Area 4 – Inner Park**

**CHA13:** Retain the quiet, uncluttered, informal qualities of this area of the Park.

CHA13.1: Carefully consider the introduction of additional furniture.

CHA13.2: Gradually remove the formality of the lime avenue by removing poor specimens and by avoiding replacements on-line.



## **Policy CHA14: The Green Park Character Area 5 – Apsley Roundabout**

**CHA14:** Liasing with Westminster City Council (WCC) on the management of this historic extent of The Green Park, including the conservation of monuments, as the key connecting link between The Green Park and Hyde Park.

CHA14.1: Establish regular review procedure with WCC to liaise on any proposed changes/enhancements.

## **I4.0 IMPLEMENTATION**

---

This section describes a framework for monitoring the success of the management plan in meeting the requirements of policies; establishes opportunities to review the management plan and sets out a mechanism for implementing specific projects within the context of the management plan and wider Royal Parks policies.

- Monitoring and Review
- Next Steps - the Project Register

## **MONITORING AND REVIEW**

### **Implementation of The Management Plan**

- 14.1 This Management Plan sets out a long-term vision for the management of St James's Park and The Green Park. It is intended that the Management Plan will be seen as a source of information and guidance for the future development of the Parks.
- 14.2 In the short-term it is intended that the Management Plan will:
- Inform the day-to-day management of St James's Park and The Green Park;
  - Provide a baseline for assessing the suitability of planned projects.
- 14.3 Over the longer term it is hoped that it will:
- Encourage co-operation and co-ordination between different groups with an interest in the Park including The Royal Parks, Buckingham Palace, Westminster City Council, The Military, Whitehall, Downing Street, The Government Estate, business partners and local interest groups.
  - Inform the preparation and development of detailed studies for the restoration and enhancement of the Park.

### **The Operations Plan**

- 14.4 The Operations Plan is prepared which identifies work to be undertaken in the Park over the next year with a wish list of projects (project register) that are likely to be needed in the next 10 years (the plan period), based on achievement of the objectives for management and recommended actions set out in this document. Projects which involve improvements to buildings or hard landscape features or artefacts are managed by the Estates Management Team as part of the Works programme which covers all the eight Royal Parks. A list of works is prioritised based on a set of criteria. Activities are identified as routine works, cyclical works, reactive works or one-off projects. The year in which one-off projects should be undertaken is identified.
- 14.5 The Operations Plan contains an action plan which will feed into the annual work programme for the Park. The ability to carry such prescriptions forward depends, to a large degree, on financial, human and technical resources in management. The plan in itself does not secure financial resources. Annual budgets throughout The Royal Parks have been under great pressure for a number of years and, as perceived by The Royal Parks Review Group in 1995, there is a resultant backlog of repair and maintenance works, particularly in relation to landscape, buildings and structures. The management plan should assist in helping to identify priorities in forward planning, budgeting and expenditure.

## **Consultation and Adoption of the Plan**

- 14.6 Subject to approval of The Royal Parks Management Team, the Management Plan will be available to interested parties including the Metropolitan Police, Greater London Authority, English Heritage, Westminster City Council, London Biodiversity Partnership and Natural England. Consultee list shown in Appendix 2

## **Monitoring**

- 14.7 Monitoring the effects of the management policies and projects is fundamental for the successful use and implementation of the plan. This should relate achievements to policies and provide information on which to base future amendments to the management plan or management policies.
- 14.8 In order to undertake successful monitoring the baseline information needs to be up to date and readily available. The Royal Parks is in the process of planning a Geographic Information System (GIS). This aims to provide up-to-date base plans, biological data and tree survey information. A timetable is being agreed for a phase I habitat survey.
- 14.9 The key areas for monitoring at St James's Park and The Green Park are:
- Condition of trees, pattern, condition and success of the renewal strategy.
  - Security.
  - Quality and promptness of cleaning operations without conflict to pedestrians.
  - Conserving and restoring the flavour of the 'Nash' landscape (in St James's Park).
  - Quality of presentation of horticultural features, surfaces, monuments, infrastructure and furniture.
  - Social inclusiveness and accessibility.
  - Protection and management of views and skyspace.
  - Ecological enhancements.
- 14.10 The achievements of this Management Plan will be reviewed on an annual basis through the Operations Plan action plan monitoring process. The review will involve the assessment of projects implemented against those contained on the action plan (derived from the Management Plan project register) and prioritised to inform to forward budgets. Management projects successfully completed in the preceding 12 months, will be recorded and projects from the register will be brought forward for implementation. It is probable that financial and human resource constraints and delays in timetable will mean that some projects will slip from the planned programme. These should become priorities for implementation in the next phase.

14.11 The annual schedule of capital projects should provide a useful tool for prioritising work and budgets.

## **Review**

14.12 The whole Management Plan should be reviewed at the end of the first five-year period in 2012. The purpose of this review is specifically to:

- Incorporate information newly available (e.g. visitor surveys, ecological surveys, tree surveys);
- Take changing circumstances into account (such as the impact of the 2012 Olympics);
- Include the results of monitoring with fine-tuning of projects where necessary;
- Assess achievements over the first five years in terms of (a) policy (successes and failures) and (b) projects.

14.13 The review should set out a further detailed schedule of works and a timetable for future plan review. A ten-year review programme may be sufficient in the longer term.

14.14 It is essential that this Management Plan and the Operations Plan work together and are 'dynamic' and responsive to change. As new information becomes available through the monitoring process or when circumstances change, consideration may need to be given to modifying or changing prescriptions while upholding the principles set out in the management plan.

## **15.0. THE PROJECT REGISTER – Updated 2014**

15.1. The Project Register is a dynamic component of the Management Plan and sets out recent achievements and potential projects generated by or acted upon by The Royal Parks.

### **St James's Park**

#### **Part A: Projects completed 2011 - April 2014**

- Queen Victoria Memorial bronzes restored - April 2011
- Remedial repairs to Well P – Duck island pumping system - June 2011
- Tiffany Fountain unveiled - 9<sup>th</sup> July 2011
- Queen Victoria Memorial re-gilded - October 2011
- Blue Bridge re-surfaced - November 2011
- Marlborough Gates refurbished - November 2011
- Guards Division Memorial re-pointed - November 2011
- New Road Gates refurbished - December 2011
- HM The Queen opens Diamond Jubilee Greenway - 29<sup>th</sup> February 2012
- London 2012 Olympic and Para Olympic Games - July – August 2012
- Post Olympic Games re turfing project - October 2012
- Three new pelicans from Prague Zoo released onto lake - March 2013
- Birdcage Walk/Horse Guards Rd junction safety improvements - April 2013
- Park toilets refurbished - May 2013
- Final section of Mall re-surfaced - September 2013
- Guards Division Memorial gates and fencing refurbished - November 2013
- Birdcage Walk street lighting renewed - November 2013
- Stone repairs to Statue of Lord Mountbatten - November 2013
- Buckingham Gate Lodge and Gates refurbished - November 2013

#### **Part B: Project Proposals April 2014-16**

- York stone paving replacement and repairs - ongoing (March/April 2014)
- Installation of new bow top fencing - ongoing (March/April 2014)
- 1 replacement and 2 new fingerposts (completion of 2 year programme) – May 2014
- Wildlife Interpretation boards – by early summer 2014
- Restoration of Duke of York column, statue, and steps – August 2014
- Installation of new handrail with under-lighting on Duke of York steps (Crown Estate Project) – Autumn 2014
- Restoration of the Queen Mother Memorial and George VI steps – Sept 2014
- Queen Victoria Memorial – floodlighting renewal and upgrade – in development
- Strategic improvements to cycling along Constitution Hill, around QVM, Spur Rd and Birdcage Walk

## **The Green Park**

### **Part A: Projects completed 2011 - April 2014**

- Constitution Hill resurfaced - September 2009
- Constance Fountain re-located and restored to working order - August 2011
- Opening of new entrance from Green Park station - September 2011
- Canada Memorial – Landscape Improvements - October 2011
- Watering Holes drinking fountain installed - February 2012
- Improvements to Constitution Hill lighting - February 2012
- Bomber Command Memorial unveiled - June 2012
- HM The Queen opens Diamond Jubilee Greenway - 29<sup>th</sup> February 2012

### **Part B: Project Proposals April 2014-16**

- Wildlife Interpretation boards – by early summer 2014
- Footpath rationalisation and turf repairs behind Canada Gate – Autumn 2014

## **Victoria Tower Gardens**

### **Part A: Projects completed 2011 - April 2014**

- Lambeth Bridge gates restored - January 2013
- Phase I Playground refurbishment - May 2013

### **Part B: Project Proposals April 2014-16**

- Playground refurbishment Phase II - May to August 2014
- Refurbishment and re-opening of abandoned public toilets and relocation of Spicer Memorial - September 2014
- 2 new fingerposts – Autumn 2014

## **APPENDIX I**



## REGISTER OF PARKS AND GARDENS OF SPECIAL HISTORIC INTEREST

**ST JAMES'S PARK****GREATER LONDON****Date Registered: 01 OCT 1987****CITY OF WESTMINSTER****Grade: I****NGR: TQ2979****Site Reference Number: 1455**

A Tudor royal hunting park, laid out formally in the C17 and remodelled as a landscape park in 1828. Famous names associated with the development of the site include Andre Mollet, Henry Wise, Charles Bridgeman, Lancelot Brown, and John Nash.

**HISTORIC DEVELOPMENT**

St James's Park was formed in 1531 under Henry VIII who bought the ancient leper hospital of St James and rebuilt it as St James's Palace, a royal retreat from his palace in Whitehall. The land to the south of the Palace was walled in to make a royal hunting park. During the reign of Elizabeth I, an east/west avenue on the alignment of The Mall was established. James I started a menagerie and a collection of wildfowl, brought water over from Hyde Park (qv) to Rosamund's Pool (now lost under the west end of Birdcage Walk), and made an unsuccessful attempt to establish a mulberry garden, which was also situated at the western end of the site. Under the Protectorate, the park became slightly more accessible with a number of privileged residents being allowed to hold keys.

Charles II enlarged St James's Palace and initiated a new design for what became London's first city park. The formal French layout, possibly by Andre Mollet (LUC 1981), centred around a new canal, c 2.5km long, which was made by Adrian May (a gentleman of the Court) in 1660 (Garden Hist 1998). Additional avenues of trees marked the promenade of The Mall to the north and Birdcage Walk to the south. A patte d'oise of tree-lined paths was designed at the eastern end of the canal, with a decoy area for ducks to the south-east. Rosamund's Pool was formalised (Knyff 1662; in LUC 1981). Around the same time the king acquired further grassland to the north-west which formed Upper St James's Park (now The Green Park qv).

Subsequent reigns saw little major change. Under the reign of William and Mary works continued in the decoy and a tea house was built near there. After the destruction of Whitehall Palace by fire in 1698 the court took up residence in St James's Palace. Henry Wise (1653-1738) managed the park for Queen Anne as part of his duties as Royal Gardener. At the same time the Duke of Buckingham redeveloped the site of Goring House at the western end of the park and sited his new Buckingham House at the intersection of the vistas of The Mall and the canal which gave the impression that the park and The Mall had been created for the new house.

By 1761 George III had bought both Buckingham House and its grounds. In 1770-1 Lancelot Brown (1716-83), who had been appointed Royal Gardener in 1764, supervised the infilling of both the decoy canals and Rosamund's Pool and put forward proposals to improve the park. By 1790 the inner parkland was separated from The Mall and Birdcage Walk and enclosed by a fence. The park in general however was allowed to decay and by 1823 the

**REGISTER OF PARKS AND GARDENS OF SPECIAL HISTORIC INTEREST**

Commissioners of Woods were reporting on the poor state of the park, the inadequate drives and walks, and the poor drainage, and suggested that it should be laid out as a pleasure garden. John Nash (1752-1835) responded to the Commissioners' brief for improvements to the park, putting forwards his plans and gaining approval by the beginning of 1827. His proposals included not only opening the park to the public but also buildings on both sides of the park. As part of Nash's scheme the canal was deformed and, while retaining a number of the mature trees, included thirty-seven new plantations. The superintendent of the Royal Gardens at Kew, William Aiton (1731-93), is thought (LUC 1981) to have advised on suitable planting.

The period up to the 1880s saw several additions and improvements to the park. In 1887 light-wheeled traffic was allowed along The Mall, the Queen Victoria Memorial and gardens were created in front of Buckingham Palace to the design of Sir Aston Webb at the beginning of the C20, and in 1910 the roads around the park were modified. By 1916 the inner park was completely encircled by traffic.

The park continues (1998) to be managed as a popular, well-used public open space.

**DESCRIPTION****LOCATION, AREA, BOUNDARIES, LANDFORM, SETTING**

St James's Park is situated in central London. Piccadilly Circus lies c 600m to the north, the Houses of Parliament 400m to the south-east, and Buckingham Palace c 200m to the west. The c 32ha site is bounded by major roads: both The Mall to the north and Birdcage Walk to the south can be traced back to the reign of Charles II when they were an integral part of the park. The former, a broad triumphal way lined with plane trees, has its origins in the C16, and the latter, also tree-lined, is related to the site of the Charles II's aviary. The rear of numerous government buildings associated with Whitehall to the north-east provide the boundary to Horse Guards Parade which lies at the east end of the park, the site having originally been used as a mustering ground for Charles II's personal body guard. The parade ground became detached from the park when Horse Guards Road was made in 1916. To the west, the area around the Victoria Memorial is included within the area here registered, the main gates of Buckingham Palace (qv) forming the boundary at the west end. Clumps of shrubs and trees decorate the undulating ground which slopes down towards the lake in the centre of the site.

**ENTRANCES AND APPROACHES**

The site boundary extends to the building line on all four sides and there are numerous access points from the surrounding area. The principal gate to the inner park is Marlborough Gate. Situated on the south-east side of The Mall, opposite St James's Palace and Marlborough Road, the iron gates and Portland stone gate piers (listed grade II) were designed by Aston Webb c 1901-1911 as part of his Victoria Memorial/Mall scheme. Other formal entrances include Queen Anne's Gate (listed grade II) to the south of the site which leads onto Birdcage Walk, as does Buckingham Gate (1832, listed grade II) in the south-west corner; and Storey's Gate in the south-east corner. Edward Storey, the first keeper of the king's birds, lived here in the late C17; the existing lodge house (listed grade II) however dates to c 1840. All the entrances lead to a network of paths which traverse the site, many of which are part of Nash's scheme of 1857 and are recorded on

**REGISTER OF PARKS AND GARDENS OF SPECIAL HISTORIC INTEREST**

the OS 1st edition map of 1869.

**PRINCIPAL BUILDING**

Duck Island Cottage is situated on Duck Island, an isthmus at the northern end of the lake. The picturesque cottage orné was built in 1840 by John Burgess Watson for the Royal Ornithological Society. The two single-storey pavilions are linked by a tree-trunk colonnade. The rendered walls with patterned leaded lattice casements and rustic doors, are topped with patterned tile roofs set off with ornate carved bargeboards and finials.

**PARK**

From Marlborough Gate a gravel-coated asphalt path divides, the eastern branch leading across undulating lawns to meet up with the lake-side path at the northern end of the lake, where after c 90m it arrives at the Guards Memorial and Horse Guards Parade. The main path from Marlborough Gate continues south between shrubberies and lawns which slope down from The Mall towards the lake. To the west is the Rose Walk, given by the friends of the National Gardens Scheme to mark the occasion of Queen Elizabeth, the Queen Mother's eightieth birthday (4 August 1980). The path continues south past the site of the temporary bandstand to the north-east, to the stone bridge which spans the lake. In 1957 this bridge replaced the iron suspension bridge designed by Rendall and erected in 1857. Here the path divides: to the south it crosses over the lake, to the east and west paths follow the line of the lake. This basic path layout was in place by the 1860s (OS).

The c 4.6ha lake runs north-east/south-west for the length of the site and covers some twenty percent of the area of the park. The lake was made as part of Nash's scheme when he developed the late C17 formal canal (made on the former course of the Tyburn Brook) to form a serpentine lake. Nash constructed two islands: a small one to the west and a larger complex, Duck Island, to the east. By 1904 the Victoria Memorial Gardens had been constructed, modifying the west end of the lake. During the restoration of the lake in 1923 it was further shortened to accommodate a northern shoreline footpath. Today (1998) the west end of the lake terminates at the rusticated piers of the retaining wall (listed grade I) of the Victoria Memorial Garden. The lake is enclosed within waist-high iron railings which protect the large colonies of wildfowl from the public. Views along the lake-side paths provide vistas to Buckingham Palace to the west and Horse Guards and Whitehall to the east.

After 100m the eastern lake-side path divides, the northern branch continuing north for c 450m and exiting onto the northern end of The Mall at the junction with Horse Guards Road. The Cambridge Triangle, the piece of land to the north-east of the junction, can trace its association with St James's Park to the C17 patte d'oie. The lake-side path itself continues past, to the north, the refreshment house built in the 1970s as 'The Cakehouse', but demolished and replaced by a new building in 1999. After c 50m the lake-side path meets up with the upper eastern path. With fine views north-east to Horse Guards, it then continues around the eastern end of the lake and past Duck Island Cottage. After c 50m the path divides, the eastern branch leading out to Horse Guards Road and King Charles Street, a second branch to the south terminating at the eastern end of Birdcage Walk, passing Storey's Lodge c 50m to the south-east. The serpentine lake-side path continues west for c 350m where it meets up with the path leading south from the stone bridge to Queens Anne's Gate. Like the north lawn, the ground to the south of

## REGISTER OF PARKS AND GARDENS OF SPECIAL HISTORIC INTEREST

the lake undulates and slopes down to lake. The lake-side path continues west, past the children's playground, before turning north at the head of the lake past the retaining wall of the Victoria Memorial Garden to meet up with the north-west lake-side path.

## REFERENCES

E Cecil, A History of Gardening in England (1910)  
B Cherry and N Pevsner, The Buildings of England: The Cities of London and Westminster (1973), p 642  
D Edgar, The Royal Parks (1986), pp 67-90  
Garden Hist 26, no 1 (Summer 1998), pp 3-18  
Royal Parks Historical Survey, St James's Park, (Land Use Consultants 1981) [Contains maps, illustrations, and other references.]

## Maps

Newcourt and Faithorn, St James Park and Garden, surveyed 1643-7, published 1658 (reproduced in LUC 1981)  
Ogilby and Morgan, St James Park and Garden, 1681-2 (reproduced in LUC 1981)  
J Rocque, Plan of the Cities of London and Westminster and Borough of Southwark and the country near ten miles around, surveyed 1741-5, published 1746  
R Horwood, Plan of the Cities of London and Westminster, 1792-9

OS 6" to 1 mile: 1st edition published 1871  
2nd edition published 1893  
OS 25" to 1 mile: 1st edition published 1869  
2nd edition published 1893

Description written: August 1998  
Register Inspector: LCH  
Edited: February 2002

## REGISTER OF PARKS AND GARDENS OF SPECIAL HISTORIC INTEREST

**GREEN PARK****GREATER LONDON****Date Registered: 01 OCT 1987****CITY OF WESTMINSTER****Grade: II****NGR: TQ2879****Site Reference Number: 1799**

A royal park enclosed as a deer park by Charles II. A public open space since the mid C19.

**HISTORIC DEVELOPMENT**

Until the Restoration of the monarchy in 1660 Green Park was open waste or meadowland. King Charles II enclosed the ground with a high brick wall to form a deer park and the area became known as Upper St James's Park.

Caroline of Ansbach, wife of George II, took an interest in The Upper (St James's) Park and in 1730 the Board of Works were ordered to prepare a private walk along the eastern border of the park so that members of the royal family might walk in privacy. Nearby the queen had a summer pavilion, usually referred to as the Library, built for her by William Kent (1685-1748). At about the same time a canal or reservoir at the north-east end of the park was enlarged to cope with the increased needs of St James's Palace, Buckingham House, and the park itself. The reservoir was decorated with a fountain and known as the Queen's Basin.

During much of the C18 the park was used for military parades. The end of the War of Austrian Succession (1740-8) was celebrated in 1749 by a huge display of fireworks but the celebrations, which included a rendition of Handel's great overture, ended in confusion during which the Temple of Peace, especially built for the occasion, and the Queen's Library, which was already derelict, were almost completely destroyed. By the mid C18 the park was known by its current name, Green Park. In 1767 it was reduced in size to enable the gardens planned for Buckingham House to be enlarged, and at around the same time other developments encroached on the park to the east of Queen's Walk.

The park was opened to the general public in 1826 and four years later Constitution Hill (to the south) was improved and the Wellington Arch (listed grade II\*) by Decimus Burton (1800-81) constructed. By 1835 complaints were being made about the disgraceful state of the park and subsequently the Tyburn Pool to the south-east, and the Queen's Basin to the north, were filled in and the Old Ranger's Lodge which stood at the Hyde Park end of the park was demolished. Trees and shrubs were planted along the Piccadilly edge.

Green Park remains (1998) a well-used public open space.

**DESCRIPTION****LOCATION, AREA, BOUNDARIES, LANDFORM, SETTING**

Green Park is located in central London: Hyde Park (qv) lies c 500m to the north-west, St

## REGISTER OF PARKS AND GARDENS OF SPECIAL HISTORIC INTEREST

James's Park c 100m to the south-east, and Buckingham Palace (qv) c 100m to the south. The site is bounded to the north-west and north by Piccadilly, and to the north-east and east by the rear gardens of buildings which back onto Queen's Walk. The Mall and the road around the Queen Victoria Memorial (early C20, listed grade II\*) provide the boundary to the south-east, and the north wall of Buckingham Palace the boundary to the south of Constitution Hill. The roughly triangular 21ha site lies on undulating ground, sloping generally from north-west to south-east.

## ENTRANCES AND APPROACHES

Green Park has a number of entrances, the main one being the C20 Canada Gate to the south. This leads from the north side of the Victoria Memorial, past the Canadian war memorial, to the early C20 Broad Walk. The Broad Walk, a wide, tree-lined grass walk running north/south between Piccadilly and the Victoria Memorial, was laid out c 1920 to focus on the memorial. Pedestrian paths run parallel to the grass walk, either side of the avenues of plane trees.

## PARK

From the Canada Gate a network of paths cross the park. To the west a path follows the plane tree-lined route of Constitution Hill. The road was originally planted up by Charles II but land to the south-west was lost when George III purchased Buckingham House (now Buckingham Palace) and decided to extend the gardens, taking a slice of Green Park for the purpose. The area to the north of Constitution Hill was improved c 1830 when many of the now (1998) mature planes were planted. A horse ride and footpath run c 500m along Constitution Hill to Hyde Park Corner and the Wellington Arch. At the west end, some of which was lost in the mid C20 when the traffic system at Hyde Park Corner was improved, the footpath divides, one branch leading north-east from Constitution Hill, passing, after c 250m, a marble fountain (E J Clack 1954), and after a further c 250m joining the Broad Walk just south of Devonshire Gates. The second branch runs north, alongside Wellington Place, past, after c 30m, a small iron pedestrian gate in the railings that divide the park from Wellington Place, and continues for c 10m where it turns north-east and becomes the northern perimeter path which runs parallel with Piccadilly. The ground inside the park railings and the holly hedge (planted c 1968) is lower than the street level of Piccadilly and the undulating ground at the west end of the park slopes towards the east. After c 80m the northern perimeter path divides: one branch continues north-east parallel with Piccadilly towards Devonshire Gates, Broad Walk, and the C20 Ritz Gate. The Devonshire Gates (listed grade II\*) originated from Lord Heathfield's house at Turnham Green. They were purchased by the Duke of Devonshire for Chiswick House in 1837, then in 1897 removed to Devonshire House, Piccadilly. The gates were erected at the north end of the Broad Walk in 1921 after Devonshire House was demolished. The C20 iron Ritz Gate, named after the famous hotel (listed grade II\*) which overlooks that end of the park, is near the site of the Queen's Basin. Between the two gates is the concrete entrance to Green Park Underground station (late C20). The second path runs east in the direction of Queen's Walk and The Mall. After c 80m this path crosses the north-easterly path which originates from the west end of Constitution Hill. Some 100m to the north-east of this junction is the Clack fountain and c 50m to the south of the fountain a small wooden C20 keeper's hut. The northern perimeter path crosses the C20 Broad Walk c 200m south-west of the Ritz Gate. From the Ritz Gate the path divides, one branch running south to the Canada Gate, and the eastern branch, the Queen's Walk, following the north-

**REGISTER OF PARKS AND GARDENS OF SPECIAL HISTORIC INTEREST**

east boundary of the park to The Mall. Made c 1730 for Caroline of Ansbach, this path was intended as a private walk from St James's Palace to the Queen's Library. By the mid C18 the parkland to the east of the Queen's Walk had been eaten into with the construction of new grand houses, including Spencer House, Bridgewater House, and Stafford (now Lancaster) House. Today (1998) a low metal post and rail fence divides the asphalt and gravel Queen's Walk from the grass. A bandstand erected c 1920 on the grass midway along the Queen's Walk was removed in 1980; the level site is identified by a ring of plane trees. The early Victorian cast-iron lamp standards (listed grade II) along Queen's Walk and the other major paths are all of a similar pattern: ornamented standards with Windsor lanterns topped by crown finials on octagonal bases.

The Canadian War Memorial was given to the park in 1995 as part of the VE Day 50th anniversary commemorations. It consists of a plaque set in the ground, and two raised polished stone triangles down which a thin stream of water runs.

## REFERENCES

J Larwood, *The Story of London's Parks* (1881)  
E Cecil, *A History of Gardening in England* (1910)  
B Cherry and N Pevsner, *The Buildings of England: The Cities of London and Westminster* (1973), pp 579-80  
D Edgar, *The Royal Parks* (1986), pp 67-90

## Maps

J Rocque, *Plan of the Cities of London and Westminster and Borough of Southwark and the country near ten miles around*, surveyed 1741-5, published 1746

OS 6" to 1 mile: 1st edition published 1871  
2nd edition published 1893  
OS 25" to 1 mile: 1st edition published 1869  
2nd edition published 1893

Description written: September 1998  
Amended: October 2001  
Register Inspector: LCH  
Edited: January 2002

## **APPENDIX 2**



<p><b>British Council</b> 10 Spring Gardens London Greater London SW1A 2BN</p>	<p><b>Lt Col Toby W. Gray</b> <b>Brigade Major</b> <b>Headquarters Household Division</b> Horse Guards, Whitehall London SW1A 2AX</p>
<p><b>The Garden History Society</b> 70 Cowcross Street London EC1A 6EJ</p>	<p><b>The Garden History Society</b> <b>Patricia Bray</b> 77 Cowcross Street London EC1 M6BJ</p>
<p><b>The Churchill Museum &amp; Cabinet War Rooms</b> <b>Director – Phil Reed</b> Clive Steps King Charles Street London SW1A 2AQ</p>	<p><b>London Parks &amp; Gardens Trust</b> <b>Chair – Barbara Simms</b> Duck Island Cottage St James's Park London SW1A 2BJ</p>
<p><b>Guards Museum</b> <b>Curator – Andrew Wallis</b> Wellington Barracks Birdcage Walk London SW1E 6HQ</p>	<p><b>The Jubilee Walkway Trust</b> <b>Director – Jim Walker</b> Diddington House Main Road Bredon, Tewkesbury Glos GL20 7LX</p>
<p><b>The Mall Galleries</b> <b>Director – Lewis McNaught</b> <b>Federation of British Artists</b> 17 Carlton House Terrace London SW1Y 5BD</p>	<p><b>The Westminster Society</b> <b>Chair – Peter Handley</b> The Clergy House Hide Place London SW1P 4NJ</p>
<p><b>Institute of Contemporary Arts</b> <b>Managing Director – Guy Perricone</b> 12 Carlton House Terrace London SW1Y 5AH</p>	<p><b>The Central Royal Parks Wildlife Group</b> <b>Chair – Emily Brennan</b> Zoological Society Of London Outer Circle, Regents Park London NW1 4RY</p>
<p><b>Royal Collection</b> <b>Michael Stevens – LVO FCA, Managing Director</b> St James's Palace London SW1A 1JR</p>	<p><b>Peabody Estate</b> <b>Matthew Frith</b> 45 Westminster Bridge Road London SE 7JB</p>
<p><b>The Thorney Island Society</b> <b>Chair – Miss June Stubbs</b> 39 Westminster Mansions Great Smith Street London SW1P 3BP</p>	

## **APPENDIX 3**

## **The Royal Parks strategic, policy and report documents**

A number of the documents listed are made available to the Park Managers in electronic form on The Royal Parks computer network enabling easy reference to the latest version of the documents and reducing paper in the Park office.

### ***The Royal Parks General:***

- The Royal Parks Framework Document April 1993
- The Royal Parks Visitor Charter
- The Royal Parks and Other Open Spaces Regulations 1997 (as amended)
- The Royal Parks Corporate Plan
- Royal Parks Operational Command Unit (OCU) Policing Plan
- The Royal Parks Annual Report and Accounts
- Sustainability Report 2003/04
- ISO 14001 Environmental Policy, Objectives and Targets (since 1996 -under constant review) NB: The Royal Parks achieved ISO14001 accreditation in December 2002 (although Richmond, Bushy and Greenwich had been fast-tracked and achieved it in June 2002)
- ISO 14001 Environmental Procedures Manual (since 1996 -under constant review)
- Register of Environmental Legislation (compiled as a requirement under ISO14001, and kept under constant review)
- Health, Safety and Welfare Manual (since 1997 – under constant review)
- Royal Parks High Level Risk Register
- Events Strategy, 2004 (to be updated 2008)
- Film Strategy, 2006
- Wild Deer Management in Royal Parks (Final Draft- not formally adopted)
- Animal Pest Control Document (2006)

### ***Staff related:***

- Equal Opportunities Policy (periodically updated in line with legislation and best practice)

### ***St James's Park and The Green Park specific documents and studies:***

- The Green Park historical survey, LUC, 1981
- St James's Park Historical Survey, LUC, 1981
- An archaeological assessment and field evaluation, RCHME, 1994
- St. James's park Management Plan, Colvin and Moggridge, 1996
- The Green Park Management Plan, Colvin and Moggridge, 1996
- Strategic Management Plans, LUC, 1999
- The Green Park Draft Tree Management Strategy, Colvin and Moggridge, 2007
- St. James's Park Draft Tree Management Strategy, Harraway Tree Services, 2001
- St James's Park and The Green Park Operations Plan (Reviewed annually)
- St James's Park and The Green Park Business Plan
- St James's Park and The Green Park Risk Register
- Independent Assessment of Soft Landscape Quality Reports Spring & Autumn (carried out annually in each Park)
- Visitor Survey Report 2006 (plus records since 1994)



**The Royal Parks  
Rangers Lodge  
Hyde Park  
London  
W2 2UH**

[www.royalparks.org.uk](http://www.royalparks.org.uk)